

LINCOLN COUNTY SECTION SUMMARY

Legend

- Set 3/4" x 24" Iron Rebar Weighing 1.50 lbs/lin ft.
- ◐ Found Lincoln County Berntsen Monument (Unless otherwise noted)
- ⊕ Reset Lincoln County Berntsen Monument
- ◻ Found 6" by 6" Granite Stone Monument
- ▲ Coordinate supplied by Lincoln County Land Information Office

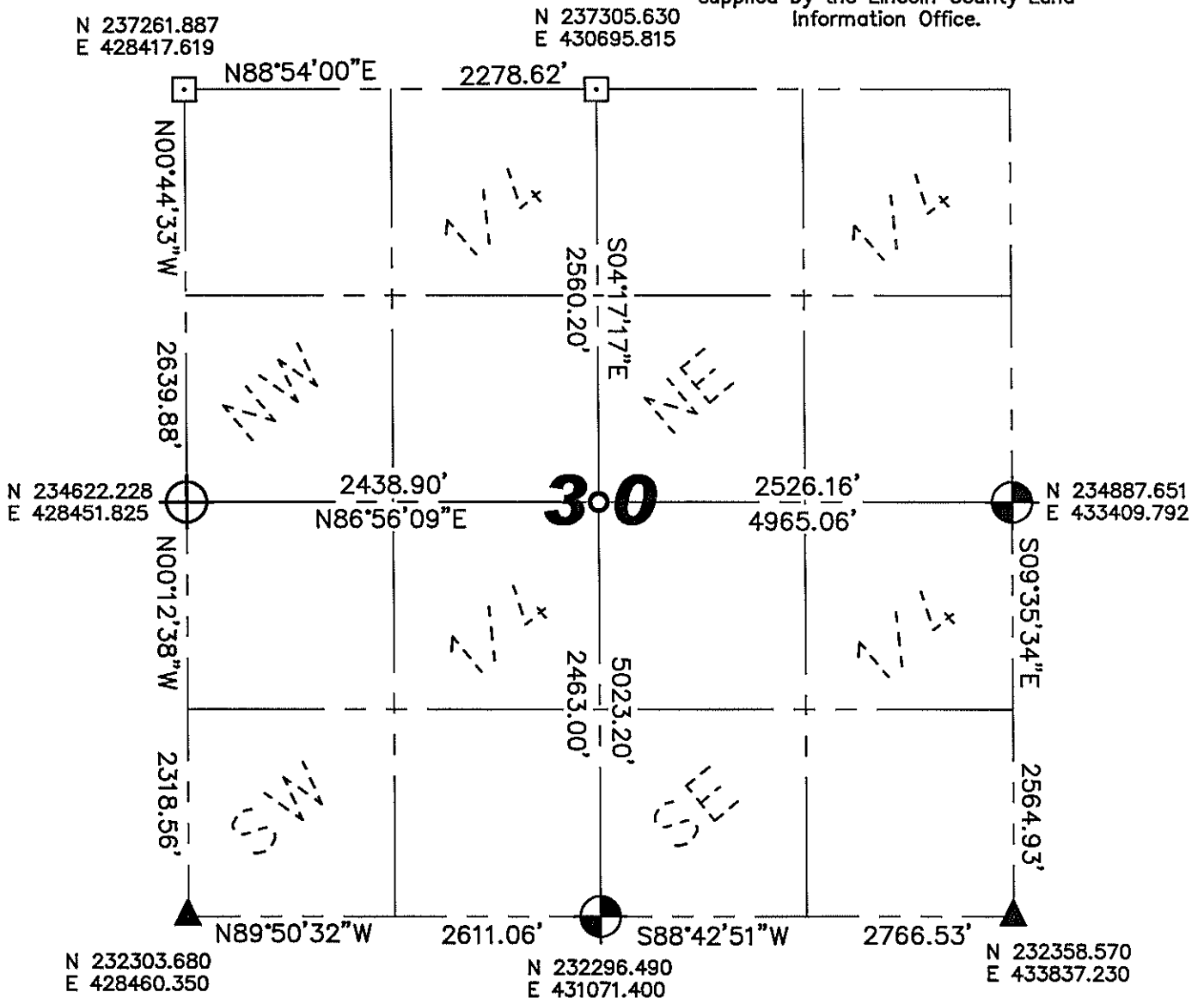
30 — 35N — 8E
Section Township Range

Harrison

Town



Coordinates and bearings are referenced to the Lincoln County Coordinate System as developed by the Wisconsin Department of Transportation and were determined by GPS observations on control points as supplied by the Lincoln County Land Information Office.

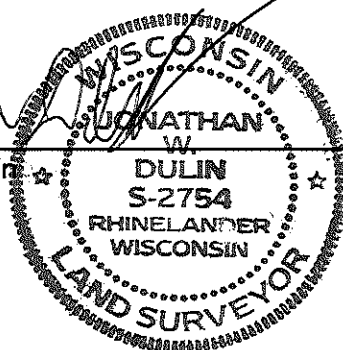


Note:

All corners were traversed to by manual survey methods, except those corners that were supplied by the Lincoln County Land Information Office.

RECEIVED BY LINCOLN COUNTY SURVEYOR THIS 28TH DAY OF October 20 08
Tommy Dulin
COUNTY SURVEYOR



Jonathan W. Dulin Date 10/7/2008



Sec. 30

LINCOLN COUNTY SECTION SUMMARY

LEGEND

- FOUND GRANITE MONUMENT
-  FOUND LINCOLN COUNTY MONUMENT
-  SET LINCOLN COUNTY MONUMENT

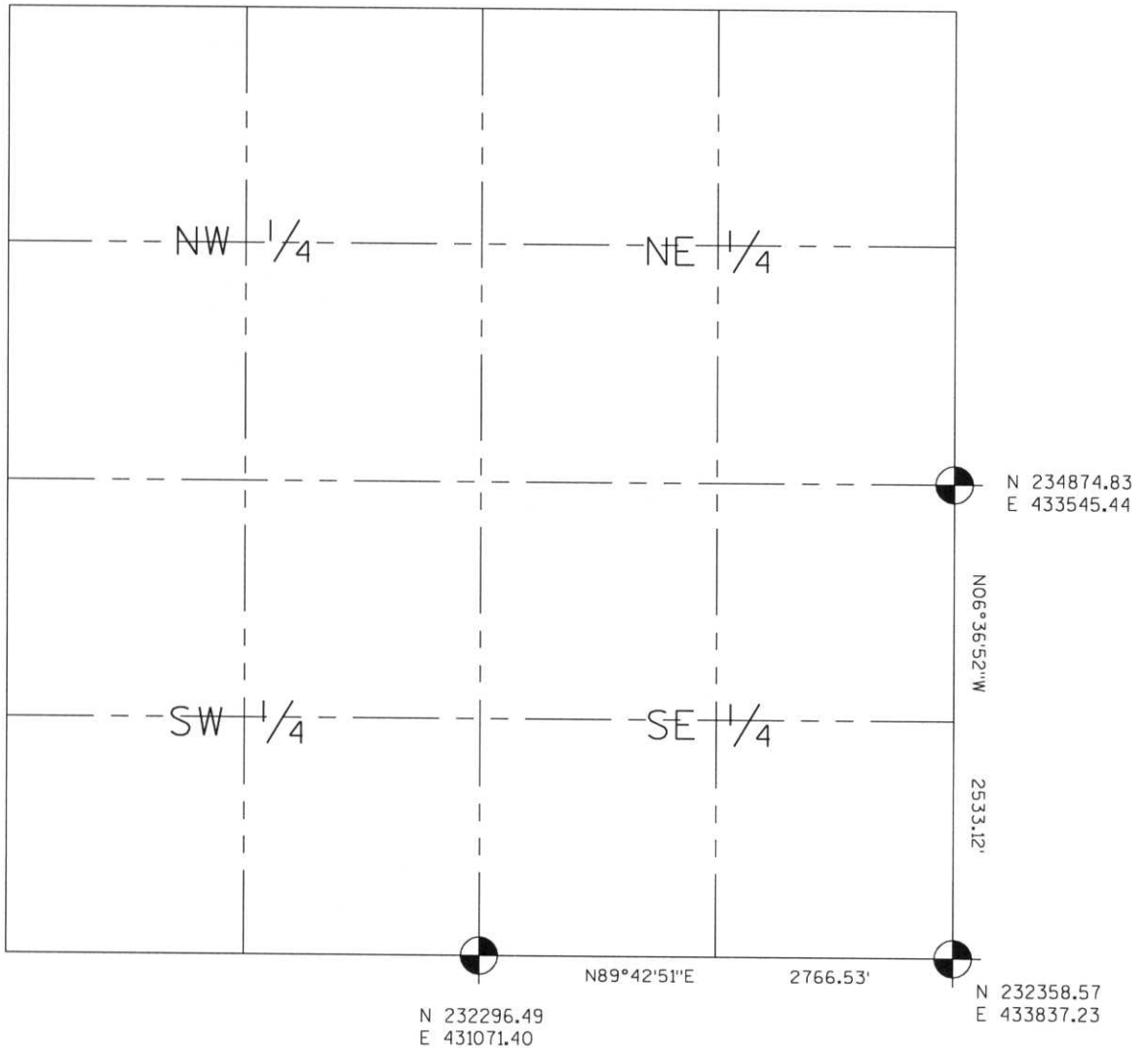
SECTION SUMMARY

30 SECTION

35N TOWNSHIP

8E RANGE

HARRISON TOWN



RECEIVED AT LINCOLN COUNTY
COURTHOUSE THIS 29TH DAY
OF December 20 03
Tara A. Rasmussen
LAND INFORMATION OFFICE

NOTES:
COORDINATES AND BEARINGS ARE REFERENCED TO THE LINCOLN COUNTY COORDINATE SYSTEM AS DEVELOPED BY THE WISCONSIN DEPARTMENT OF TRANSPORTATION AND WERE DETERMINED BY GPS OBSERVATIONS ON CONTROL POINTS AS SUPPLIED BY THE DOT.

CERTIFIED CORRECT:

Signature: Jeffrey L. Demuth Date: 12/22/03



S-5, U-3, U-5
Index No. Q, U-1, 5