





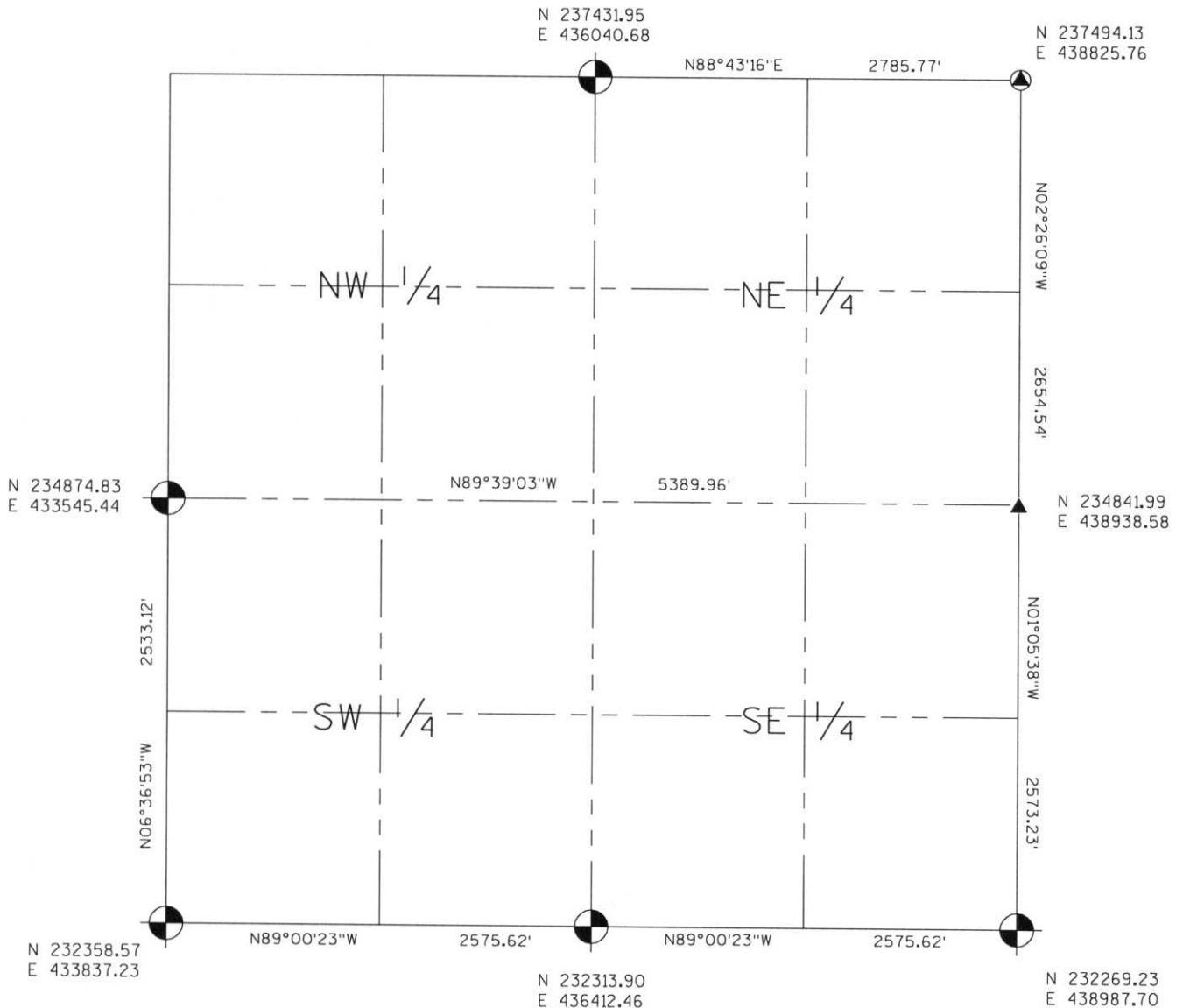
# LINCOLN COUNTY SECTION SUMMARY

LEGEND

- FOUND GRANITE MONUMENT
-  FOUND LINCOLN COUNTY MONUMENT
-  SET LINCOLN COUNTY MONUMENT
-  SET RAILROAD SPIKE
-  SET PK NAIL

SECTION SUMMARY    29 SECTION    35N TOWNSHIP    8E RANGE  
**HARRISON**  
 TOWN

RECEIVED AT LINCOLN COUNTY  
 COURTHOUSE THIS 29<sup>th</sup> DAY  
 OF December 20 03  
*Tara A. Roanman*  
 LAND INFORMATION OFFICE



NOTES:  
 COORDINATES AND BEARINGS ARE REFERENCED TO THE LINCOLN COUNTY COORDINATE SYSTEM AS DEVELOPED BY THE WISCONSIN DEPARTMENT OF TRANSPORTATION AND WERE DETERMINED BY GPS OBSERVATIONS ON CONTROL POINTS AS SUPPLIED BY THE DOT.

CERTIFIED CORRECT:

*Jeffrey L. Demuth*  
 Signature

12/22/03  
 Date

Q-7, Q-9, S-5, S-9, U-5, U-7, U-9  
 Index No. Q-0-5,9