



# LINCOLN COUNTY SECTION SUMMARY

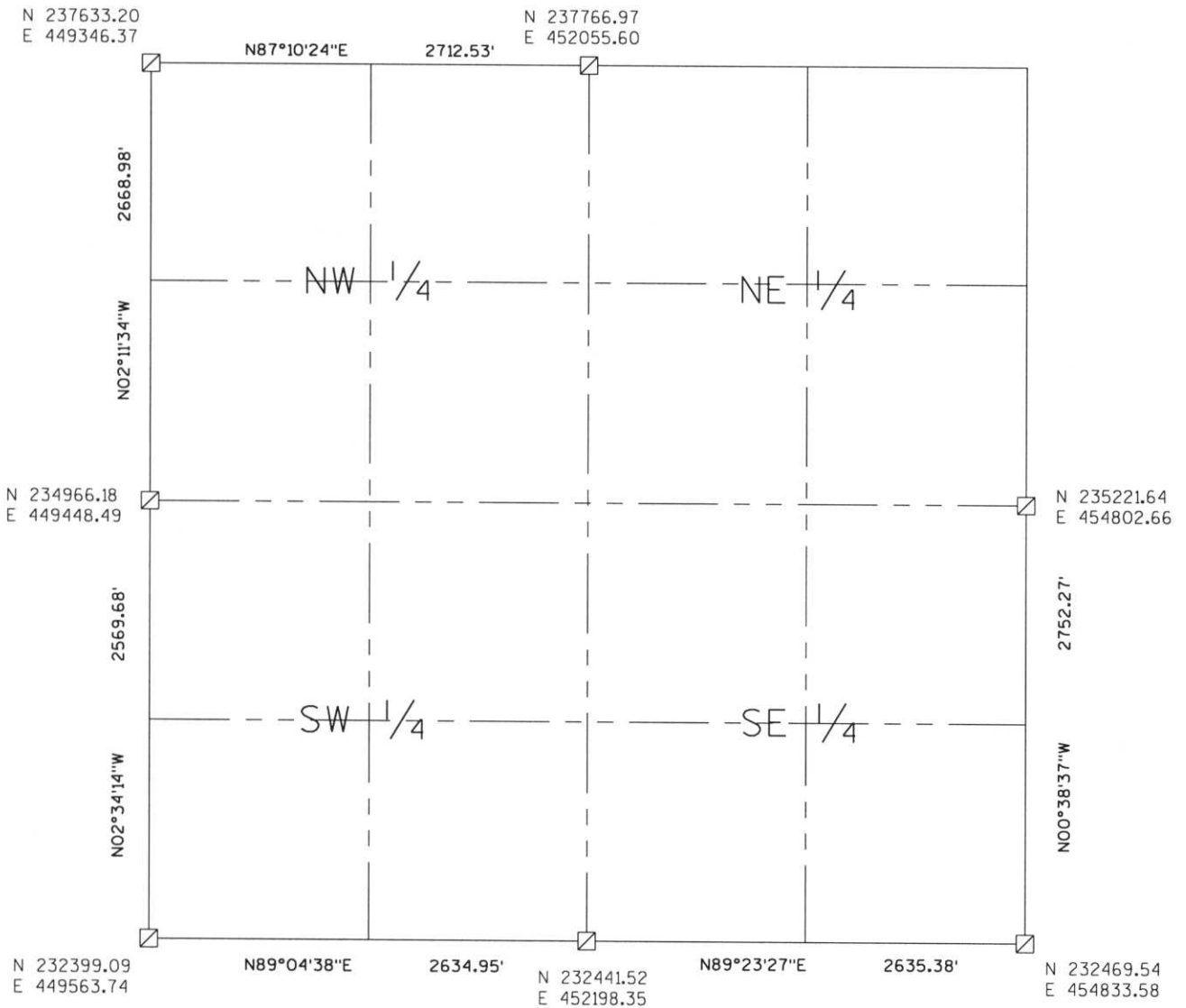
**LEGEND**

- FOUND GRANITE MONUMENT
-  FOUND LINCOLN COUNTY MONUMENT
-  SET LINCOLN COUNTY MONUMENT
- COORDINATES PER ONEIDA COUNTY

SECTION SUMMARY    26    SECTION    35N    TOWNSHIP    8E    RANGE

HARRISON  
TOWN

RECEIVED AT LINCOLN COUNTY  
COURTHOUSE THIS 29<sup>th</sup> DAY  
OF December 20 03  
Tara A. Raunser  
LAND INFORMATION OFFICE



NOTES:  
COORDINATES AND BEARINGS ARE REFERENCED TO THE LINCOLN COUNTY COORDINATE SYSTEM AS DEVELOPED BY THE WISCONSIN DEPARTMENT OF TRANSPORTATION AND WERE DETERMINED BY GPS OBSERVATIONS ON CONTROL POINTS AS SUPPLIED BY THE DOT.



CERTIFIED CORRECT:

Jeffrey L. Demuth                      12/22/03  
Signature                                      Date

Q-17, Q-19, S-17, S-21, U-17, U-19, U-21  
Index No. Q.U.-17.01