



LINCOLN COUNTY SECTION SUMMARY

LEGEND

- FOUND GRANITE MONUMENT
-  FOUND LINCOLN COUNTY MONUMENT
-  SET LINCOLN COUNTY MONUMENT
- COORDINATES PER ONEIDA COUNTY

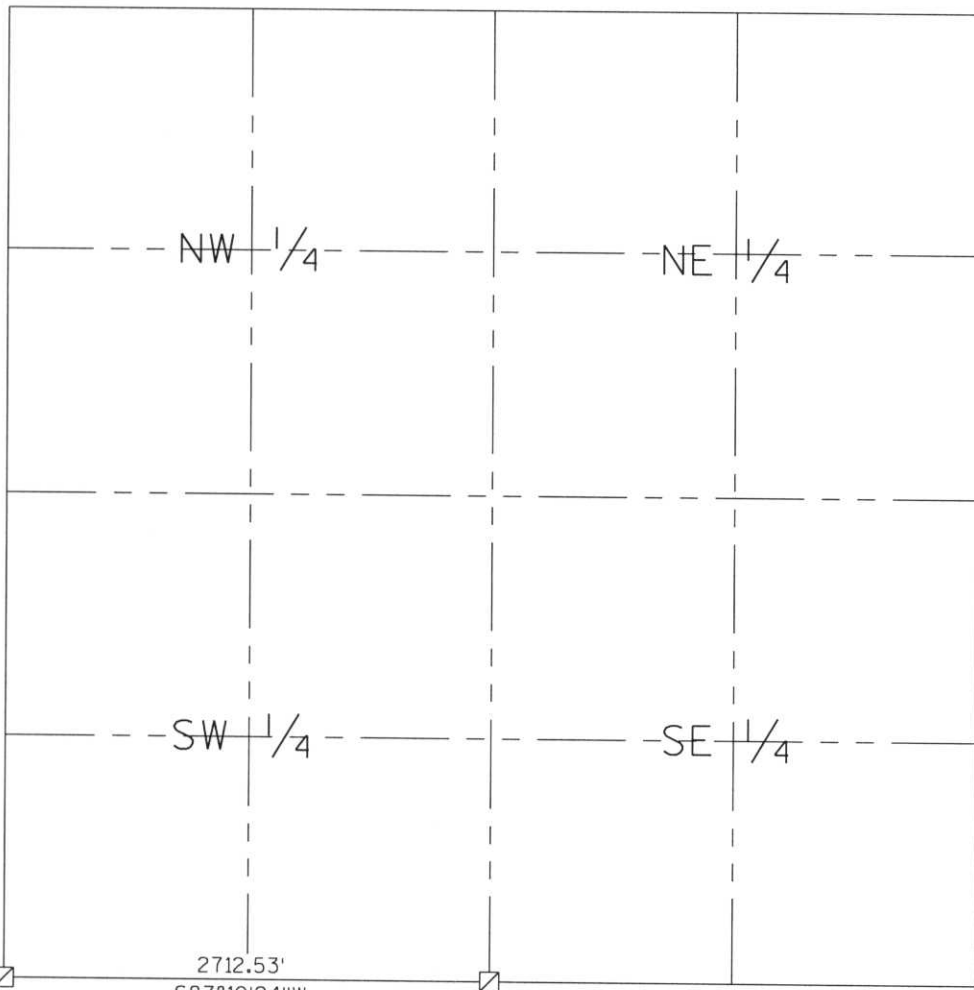
SECTION SUMMARY

23
SECTION

35N
TOWNSHIP

8E
RANGE

HARRISON
TOWN



N 237633.20
E 449346.37

2712.53'
S87°10'24"W

N 237766.97
E 452055.60

RECEIVED AT LINCOLN COUNTY
COURTHOUSE THIS 29th DAY
OF December 20 03
Tom A. Korman
LAND INFORMATION OFFICE

NOTES:
COORDINATES AND BEARINGS ARE REFERENCED TO THE LINCOLN COUNTY COORDINATE SYSTEM AS DEVELOPED BY THE WISCONSIN DEPARTMENT OF TRANSPORTATION AND WERE DETERMINED BY GPS OBSERVATIONS ON CONTROL POINTS AS SUPPLIED BY THE DOT.



CERTIFIED CORRECT:

Jeffrey L. Demuth
Signature

12/22/03
Date

Q-11, Q-19
Index No. M, Q-17, 21