

# LINCOLN COUNTY SECTION SUMMARY

LEGEND

- ☐ FOUND GRANITE MONUMENT
- ⊕ FOUND LINCOLN COUNTY MONUMENT
- ◐ SET LINCOLN COUNTY MONUMENT
- △ COORDINATES PER ONEIDA COUNTY

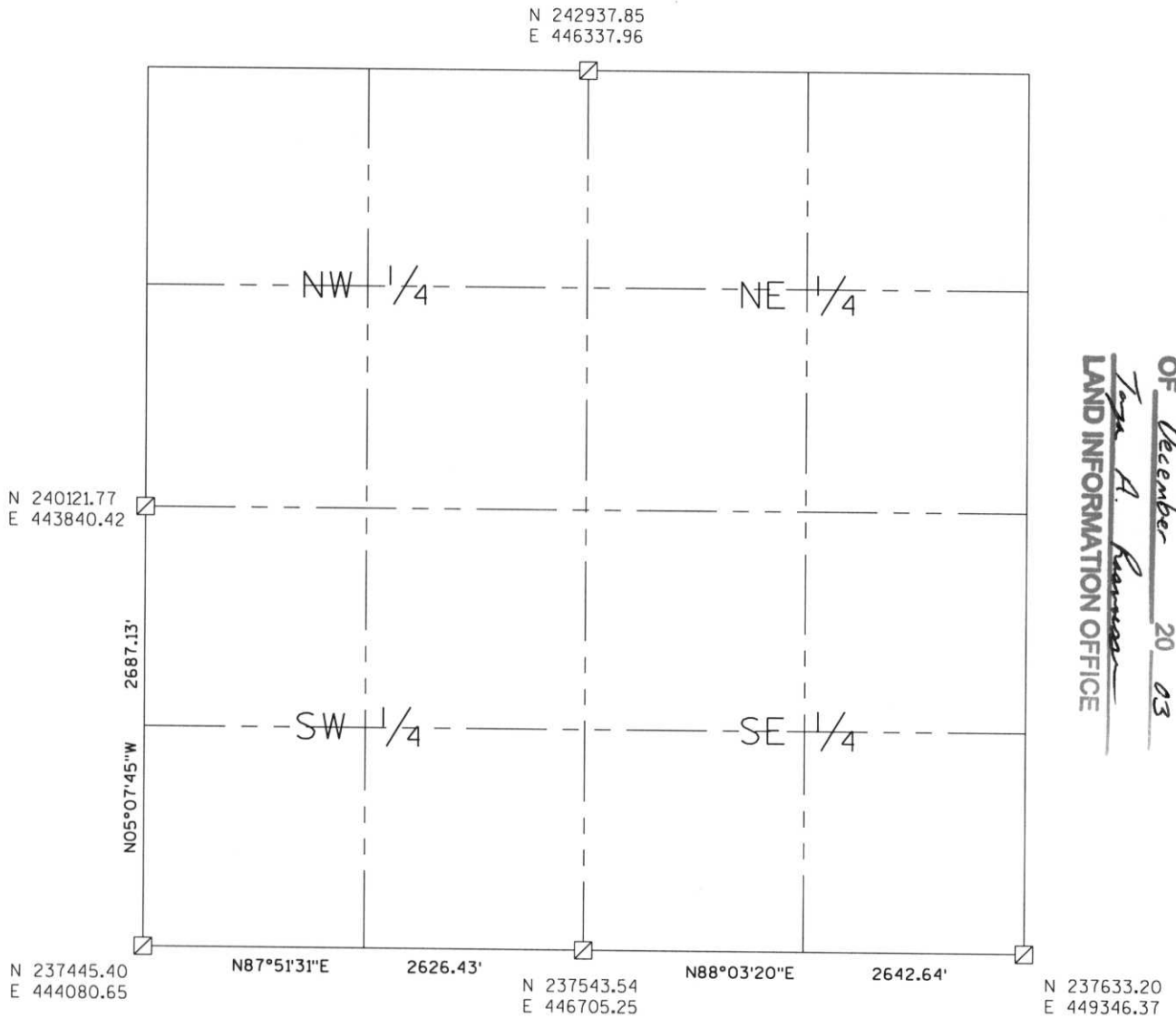
SECTION SUMMARY

22  
SECTION

35N  
TOWNSHIP

8E  
RANGE

HARRISON  
TOWN



RECEIVED AT LINCOLN COUNTY  
COURTHOUSE THIS 29<sup>th</sup> DAY  
OF December 20 03  
*Tom A. Rasmussen*  
LAND INFORMATION OFFICE

M-15, N-13, Q-13, Q-15, Q-17

Index No. M.Q. - 13, 17

NOTES:  
COORDINATES AND BEARINGS ARE REFERENCED TO THE LINCOLN COUNTY COORDINATE SYSTEM AS DEVELOPED BY THE WISCONSIN DEPARTMENT OF TRANSPORTATION AND WERE DETERMINED BY GPS OBSERVATIONS ON CONTROL POINTS AS SUPPLIED BY THE DOT.



CERTIFIED CORRECT:

*Jeffrey L. Demuth*  
Signature

12/22/03  
Date