

# LINCOLN COUNTY SECTION SUMMARY

**LEGEND**

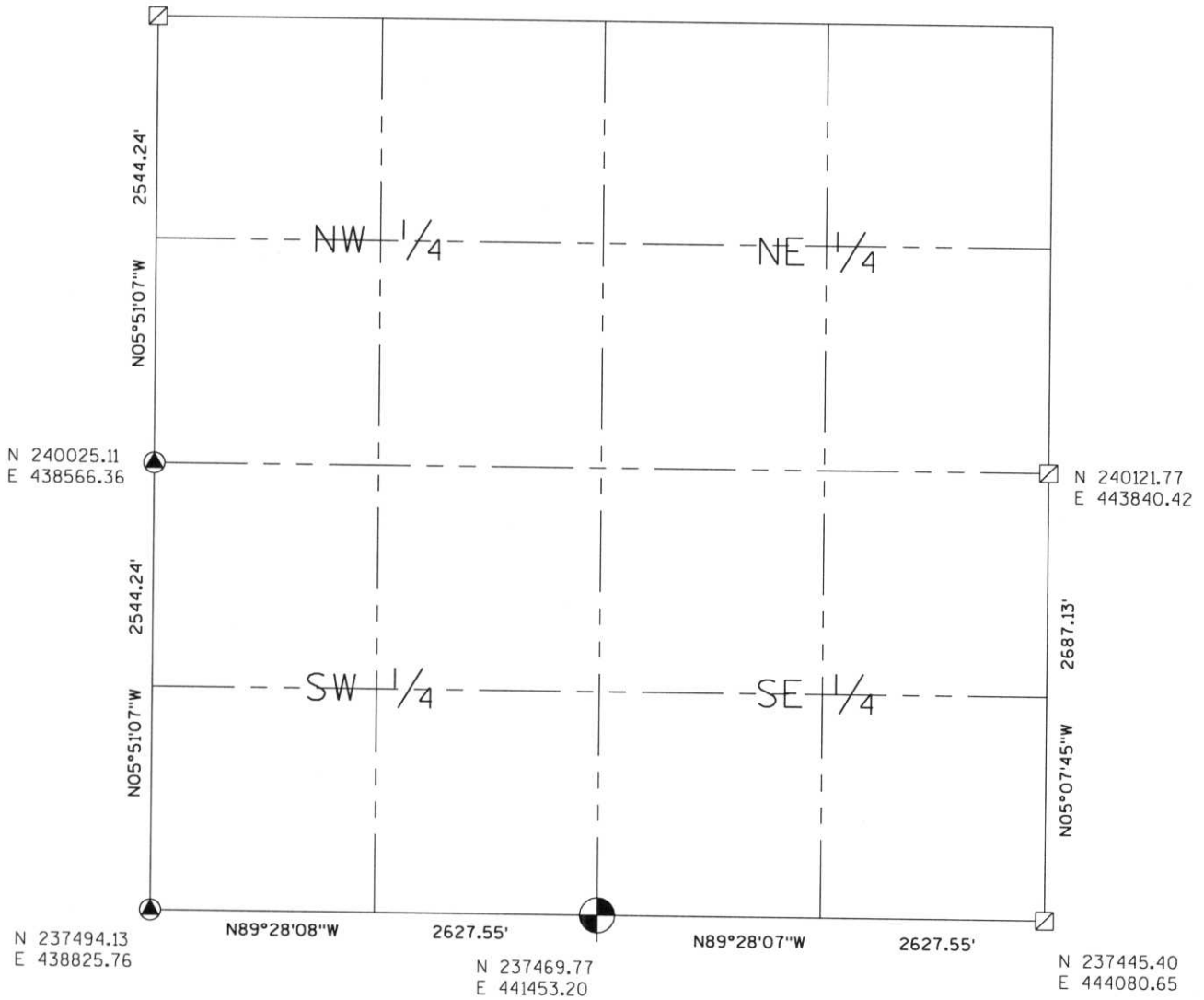
- ☐ FOUND GRANITE MONUMENT
- ⊕ FOUND LINCOLN COUNTY MONUMENT
- ⊙ SET LINCOLN COUNTY MONUMENT
- ⊙ SET RAILROAD SPIKE
- △ COORDINATES PER ONEIDA COUNTY

SECTION SUMMARY 21 SECTION — 35N TOWNSHIP — 8E RANGE  
**HARRISON**  
 TOWN

RECEIVED AT LINCOLN COUNTY  
 COURTHOUSE THIS 29<sup>th</sup> DAY  
 OF December 20 03  
Tegan A. Roamson  
 LAND INFORMATION OFFICE



N 242556.09  
 E 438306.95



NOTES:  
 COORDINATES AND BEARINGS ARE REFERENCED TO THE LINCOLN COUNTY COORDINATE SYSTEM AS DEVELOPED BY THE WISCONSIN DEPARTMENT OF TRANSPORTATION AND WERE DETERMINED BY GPS OBSERVATIONS ON CONTROL POINTS AS SUPPLIED BY THE DOT.



CERTIFIED CORRECT:

Signature: Jeffrey L. Demuth Date: 12/22/03

M-9, 0-9, Q-9, Q-11, Q-13  
 0-13  
 Index No. M, Q-9, 13