

# LINCOLN COUNTY SECTION SUMMARY

## LEGEND

- ☐ FOUND GRANITE MONUMENT
- ⊕ FOUND LINCOLN COUNTY MONUMENT
- ⊙ SET LINCOLN COUNTY MONUMENT
- ⬤ SET RAILROAD SPIKE
- △ COORDINATES PER ONEIDA COUNTY

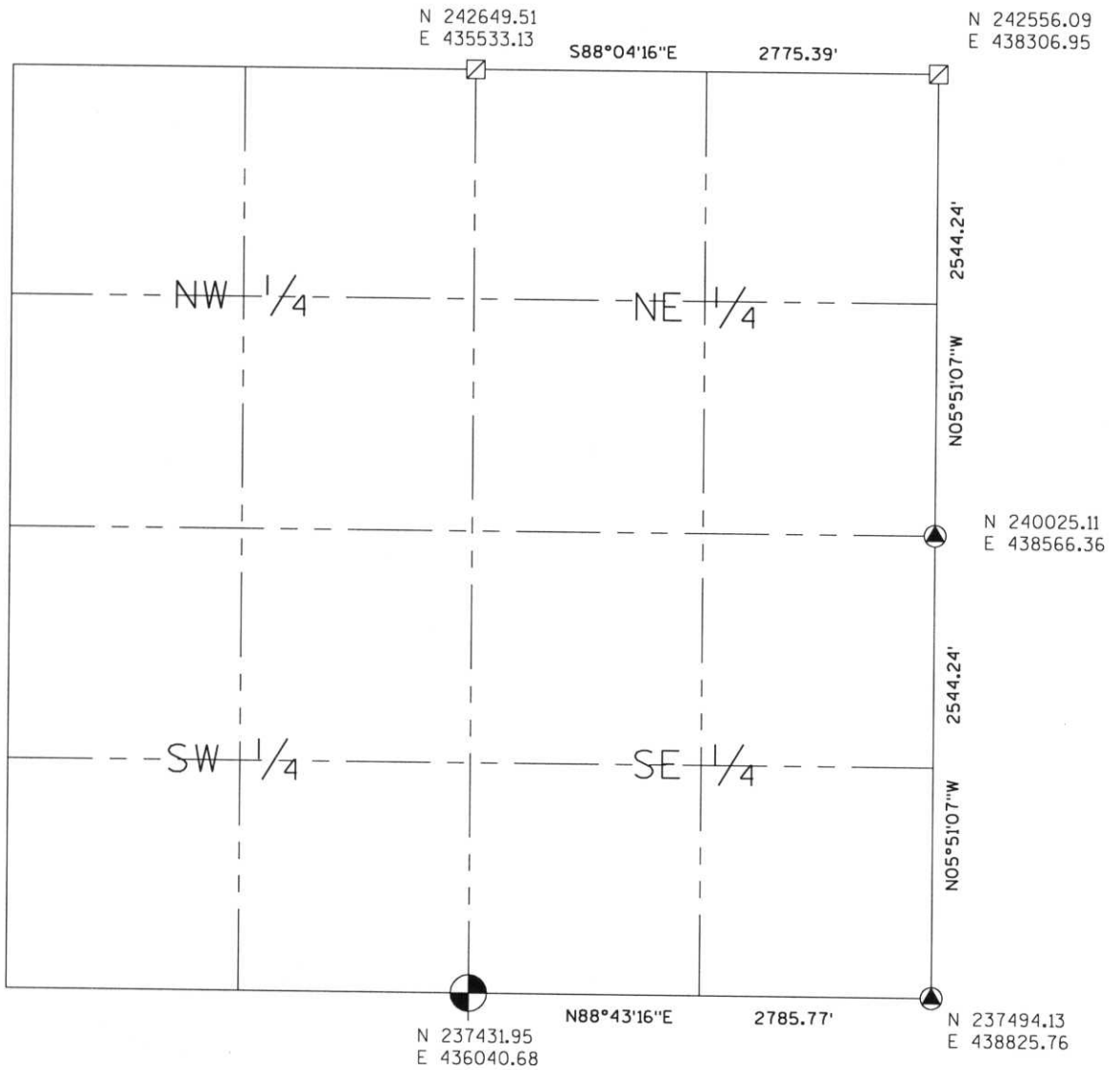
SECTION SUMMARY

20  
SECTION

35N  
TOWNSHIP

8E  
RANGE

HARRISON  
TOWN



RECEIVED AT LINCOLN COUNTY  
 COURTHOUSE THIS 29<sup>TH</sup> DAY  
 OF December 20 03  
 Jay A. Harrison  
 LAND INFORMATION OFFICE

M-7, m-9, b-w, b-9, Q-7, Q-9  
 Index No. M.O. = 59  
 65

NOTES:  
 COORDINATES AND BEARINGS ARE REFERENCED TO THE LINCOLN COUNTY COORDINATE SYSTEM AS DEVELOPED BY THE WISCONSIN DEPARTMENT OF TRANSPORTATION AND WERE DETERMINED BY GPS OBSERVATIONS ON CONTROL POINTS AS SUPPLIED BY THE DOT.



CERTIFIED CORRECT:

Signature Jeffrey L. Demuth

Date 12/22/03