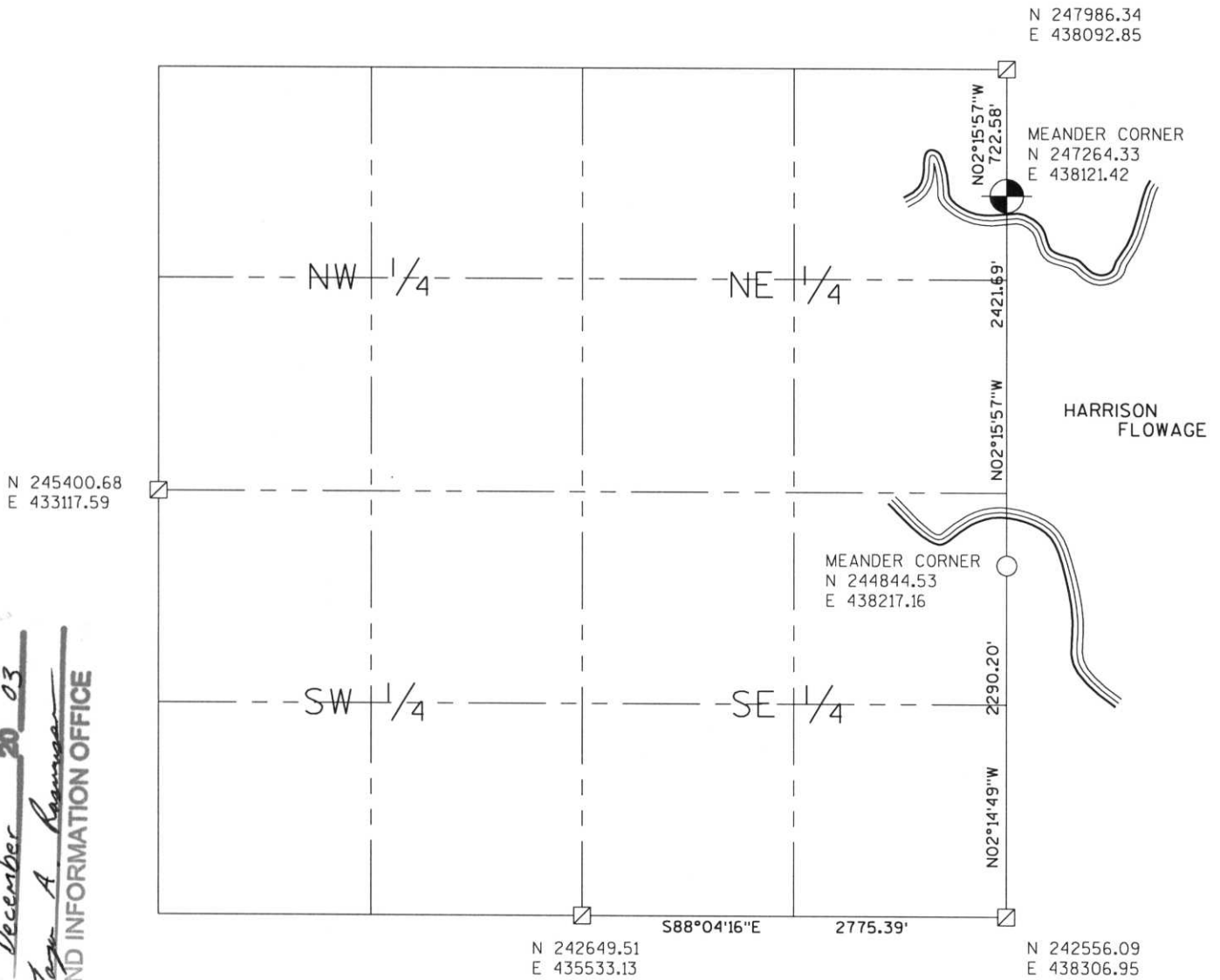


# LINCOLN COUNTY SECTION SUMMARY

**LEGEND**

- ☐ FOUND GRANITE MONUMENT
- ⊕ FOUND LINCOLN COUNTY MONUMENT
- ⊙ SET LINCOLN COUNTY MONUMENT
- FOUND 1 1/4" DIA. IRON ROD
- △ COORDINATES PER ONEIDA COUNTY

SECTION SUMMARY 17 SECTION 35N TOWNSHIP 8E RANGE  
**HARRISON**  
 TOWN



RECEIVED AT LINCOLN COUNTY  
 COURTHOUSE THIS 29<sup>TH</sup> DAY  
 OF December 20 03  
*John A. Bauman*  
 LAND INFORMATION OFFICE

NOTES:  
 COORDINATES AND BEARINGS ARE REFERENCED TO THE LINCOLN COUNTY COORDINATE SYSTEM AS DEVELOPED BY THE WISCONSIN DEPARTMENT OF TRANSPORTATION AND WERE DETERMINED BY GPS OBSERVATIONS ON CONTROL POINTS AS SUPPLIED BY THE DOT.



CERTIFIED CORRECT:

*Jeffrey L. Demuth* 12/22/03  
 Signature Date

I-9, I-5-9, K-5, K-L-9, M-7, M-9  
 Index No. I.M.-5,9