

# LINCOLN COUNTY SECTION SUMMARY

SECTION SUMMARY





16  
SECTION

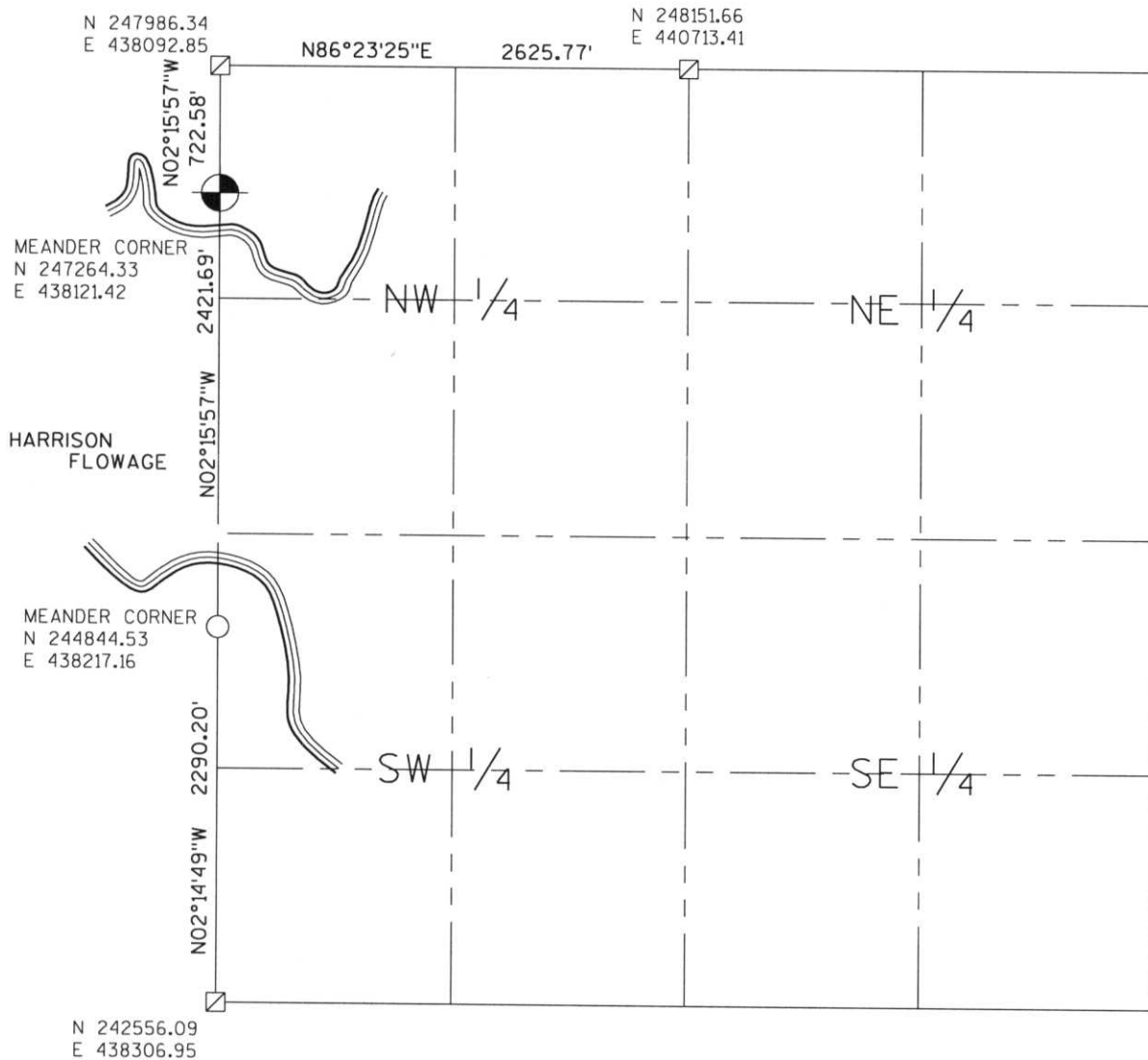
35N  
TOWNSHIP

8E  
RANGE

HARRISON  
TOWN

LEGEND

- FOUND GRANITE MONUMENT
-  FOUND LINCOLN COUNTY MONUMENT
-  SET LINCOLN COUNTY MONUMENT
-  FOUND 1 1/4" DIA. IRON ROD
-  COORDINATES PER ONEIDA COUNTY



RECEIVED AT LINCOLN COUNTY  
 COURTHOUSE THIS 29<sup>th</sup> DAY  
 OF December 20 03  
*Theresa A. Korman*  
 LAND INFORMATION OFFICE

NOTES:  
 COORDINATES AND BEARINGS ARE REFERENCED TO THE LINCOLN COUNTY COORDINATE SYSTEM AS DEVELOPED BY THE WISCONSIN DEPARTMENT OF TRANSPORTATION AND WERE DETERMINED BY GPS OBSERVATIONS ON CONTROL POINTS AS SUPPLIED BY THE DOT.



CERTIFIED CORRECT:

*Jeffrey L. Demuth* 12/22/03  
 Signature Date

I-9, I-11, IS-9, KL-9, M-9  
 Index No. IM-9,13