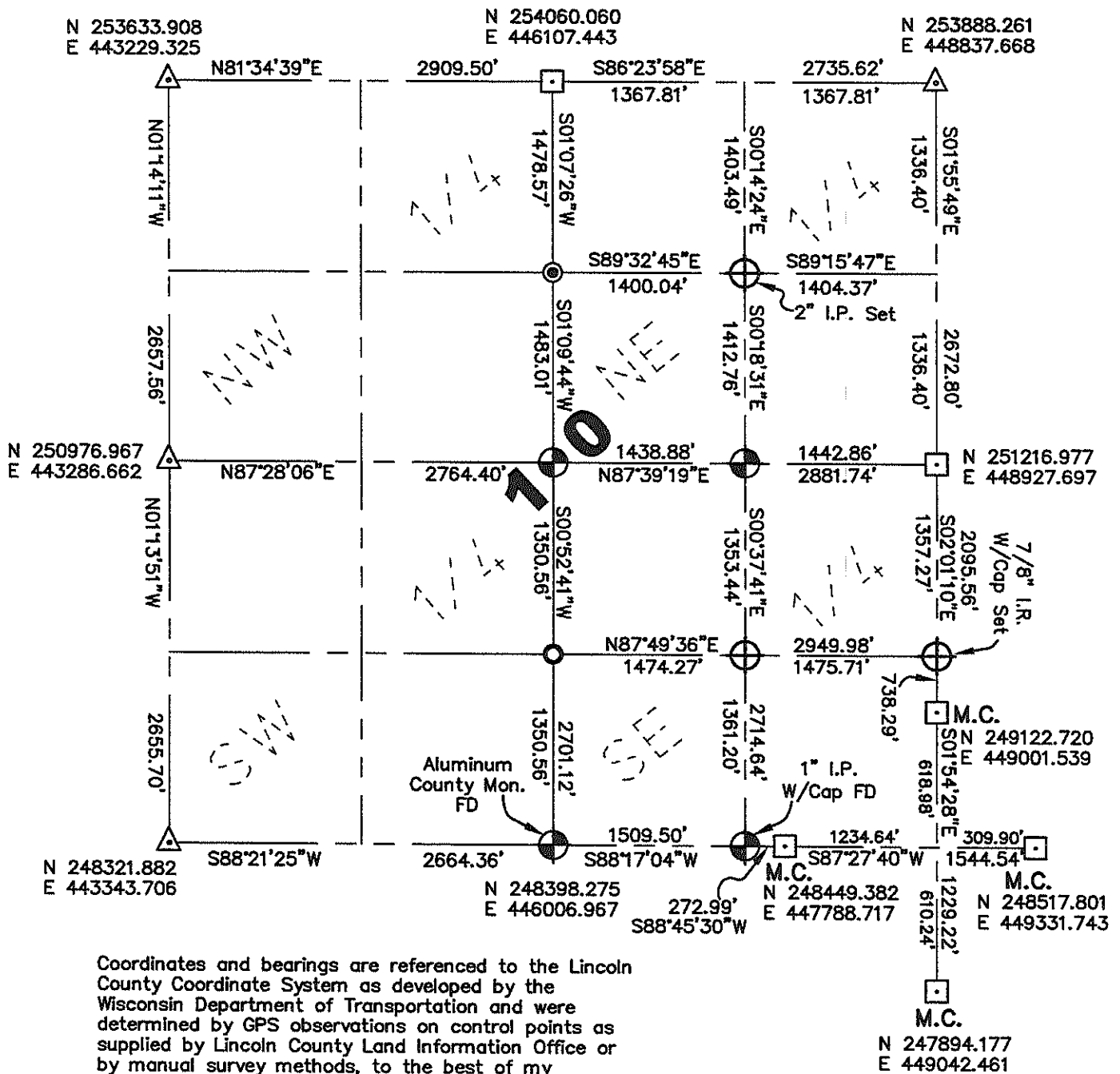


LINCOLN COUNTY SECTION SUMMARY

Legend

- Found 6" by 6" Granite Stone
- Set 3/4" x 24" Iron Rebar Weighing 1.50 lbs/lin ft.
- ⊙ Found 1" Iron Pipe
- ⊕ Set 1" x 60" Iron Pipe Weighing 1.13 lbs/lin ft. (Unless otherwise noted)
- ⊙ Found "RIPCO" Monument (Unless otherwise noted)
- △ Corner Calculated per Lincoln County GPS Coordinates supplied by the Lincoln County Land Information Office.

Section Summary **10** — **35N** — **8E**
 Section Township Range
Harrison
 Town



Coordinates and bearings are referenced to the Lincoln County Coordinate System as developed by the Wisconsin Department of Transportation and were determined by GPS observations on control points as supplied by Lincoln County Land Information Office or by manual survey methods, to the best of my knowledge and belief.

Certified Correct:

Matthew E. Hognund
 Matthew E. Hognund
 MATTHEW E. HOGGLUND
 S-1910
 TOMAHAWK
 WI
 LAND SURVEYOR

Date 10/27/08

RECEIVED BY LINCOLN COUNTY
 SURVEYOR THIS 28TH DAY
 OF October 20 08
Tom Diller
 COUNTY SURVEYOR

Sec. 10