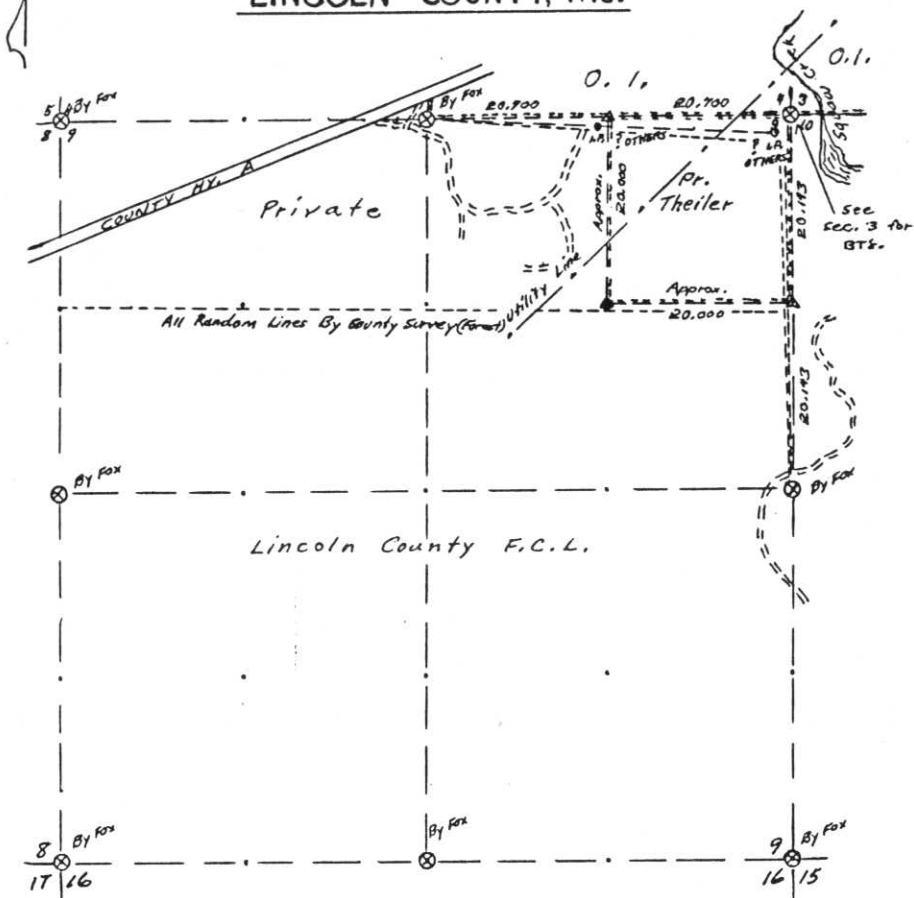


OWENS-ILLINOIS

DATE 5/3/74

T. 35 N R. 8 E SEC. 9

LINCOLN COUNTY, WIS.



LEGEND CORNERS & LINES

- Iron Pipe or Cap
- ⊙ Concrete
- ⊕ Wood Post
- △ Stake
- X Hub
- + Spike

- True Blazed - Painted
- True Cut - Blazed
- - - Approximate - Painted
- ..... Random
- xxxxx Fence
- - - R. O. W.

MAP BY

W. H. Stuth  
Surveyed By O. I.  
Stuth & Weber

Scale 1 1/2" = 1320.0'

B FILE

STATEMENT Compass & Chain Surv. using corners found

RECORDS EXAMINED \_\_\_\_\_ DWG. NO. \_\_\_\_\_

County

Received from:  
Nekoosa Paper Inc  
Forest District Office  
Menomonie, WI  
54.548

LOCAL CONTACTS \_\_\_\_\_

REMARKS \_\_\_\_\_

RECEIVED AT LINCOLN COUNTY  
 COURTHOUSE THIS 18 DAY  
 OF April 19 89.  
Pat Prebe  
 TAX DESCRIPTION OFFICE

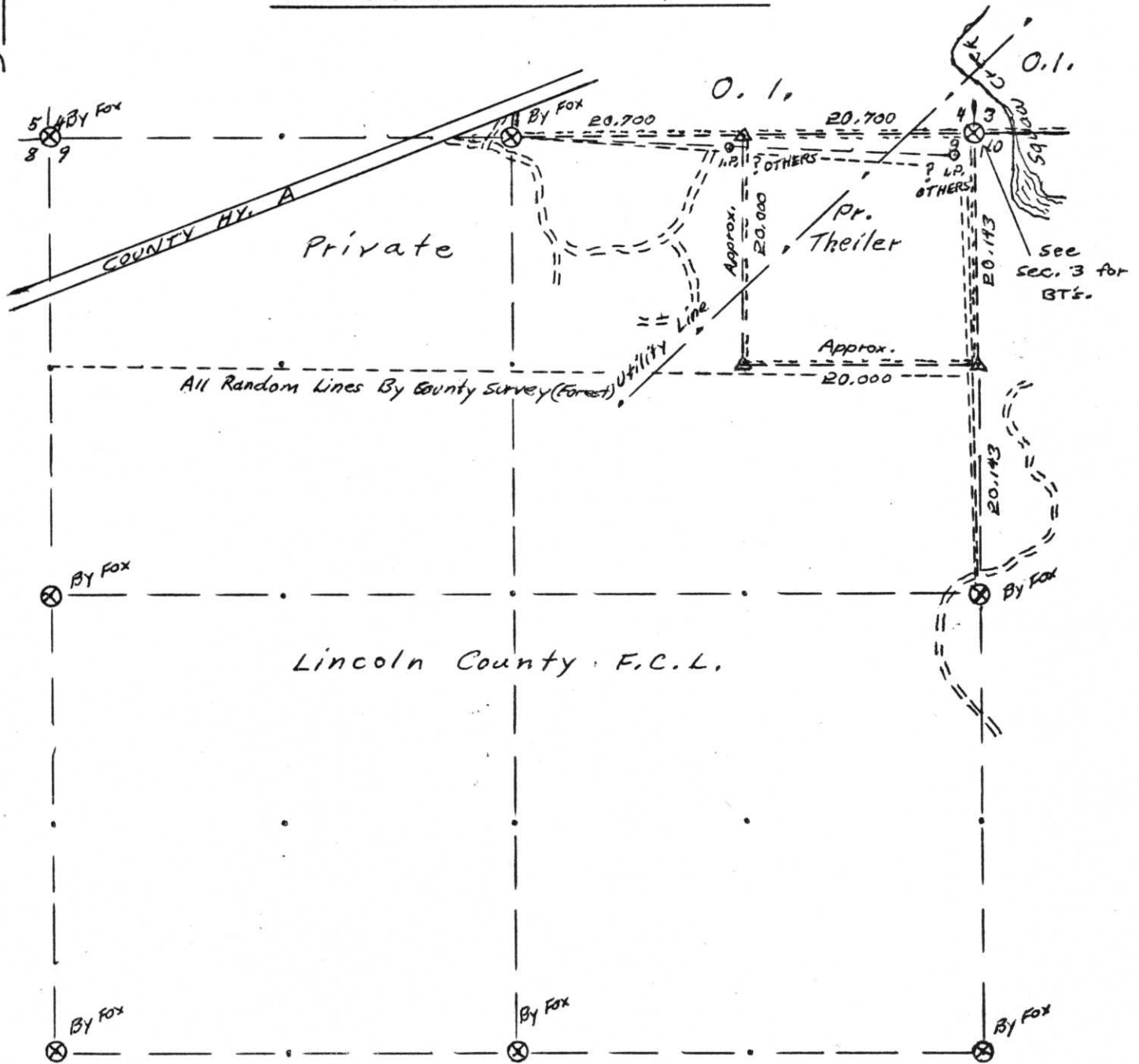
Prepared By W. H. Stuth 3/6/87





# T. 35 N R. 8 E SEC. 9

## LINCOLN COUNTY, WIS.



### LEGEND CORNERS & LINES

- |                    |                            |
|--------------------|----------------------------|
| ⊙ Iron Pipe or Cap | ==== True-Blazed-Painted   |
| ⊗ Concrete         | ==== True Cut - Blazed     |
| ⬢ Wood Post        | ==== Approximate - Painted |
| △ Stake            | ----- Random               |
| X Hub              | xxxxx Fence                |
| + Spike            | -.-.- R.O.W.               |

MAP BY  
 W. H. Stuth  
 Surveyed By O. I.  
 Stuth & Weber

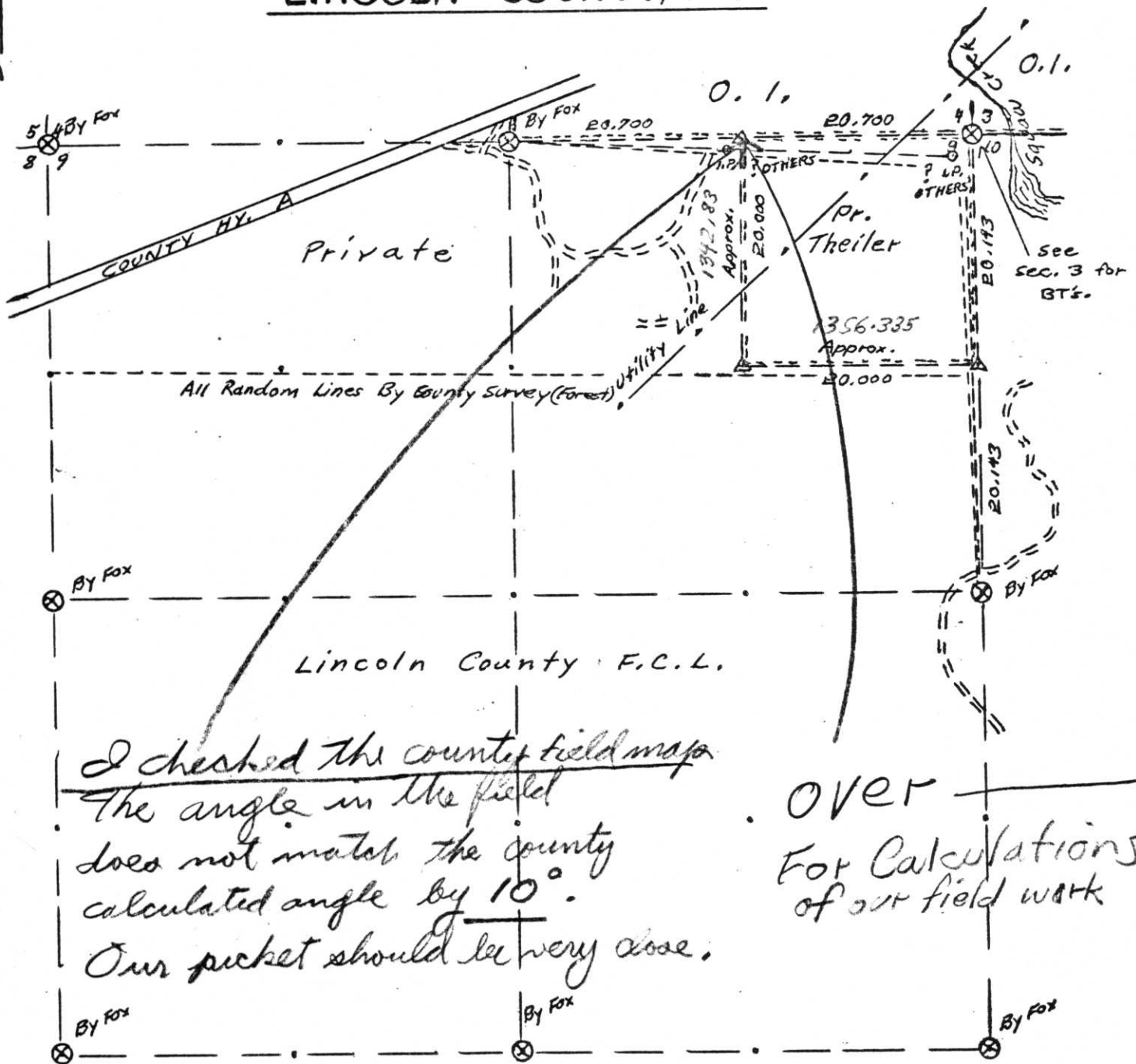
Scale 1 1/2" = 1320.0'

E-I, 9-13

(OWNERS-ILLINOIS)      DATE 5/3/24

# T. 35 N R. 8 E SEC. 9

## LINCOLN COUNTY, WIS.



I checked the county field maps.  
 The angle in the field  
 does not match the county  
 calculated angle by  $10^\circ$ .  
 Our pocket should be very close.

OVER →  
 For Calculations  
 of our field work

LEGEND CORNERS & LINES		MAP BY
⊙ Iron Pipe or Cap	==== True-Blazed-Painted	W. H. Stuth
⊗ Concrete	—— True Cut - Blazed	Surveyed by O. I.
⬠ Wood Post	--- Approximate - Painted	Stuth & Weber
△ Stake	----- Random	
× Hub	xxxxx Fence	
+ Spike	- - - R. O. W.	

Scale  $1\frac{1}{2}'' = 1320.0'$

E-I, 9-13