

# LINCOLN COUNTY SECTION SUMMARY

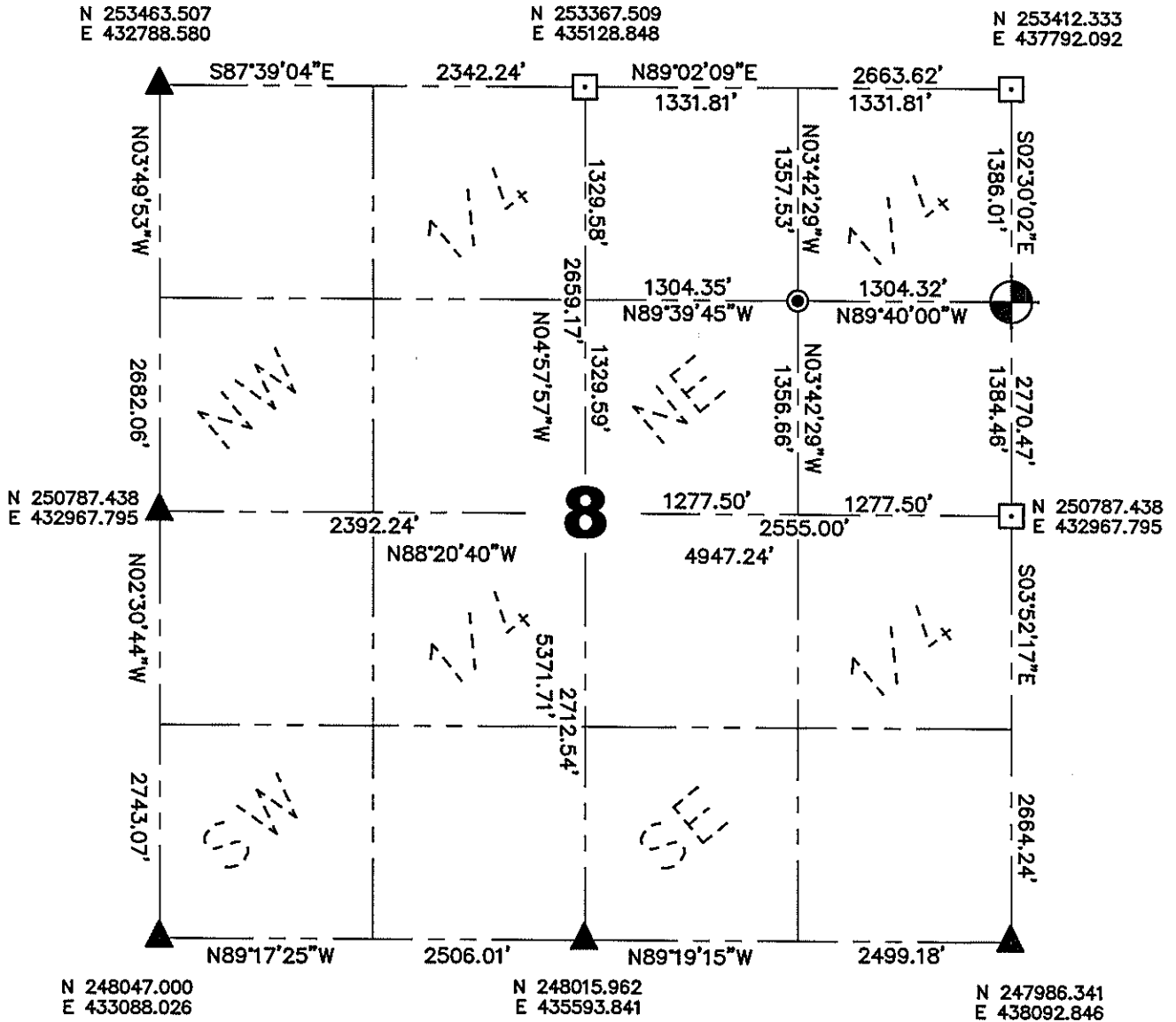
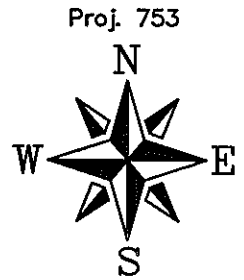
## LEGEND

- ▲ Coordinate supplied by Lincoln County Land Information Office
- ⊙ 1" Iron Pipe Found
- ⊙ Lincoln County Berntsen Monument Set
- 6" by 6" Granite Stone Found

Section Summary

**8** — **35N** — **8E**  
 Section Township Range  
**Harrison**  
 Town

Note:  
 See Map No.  
 L438B for  
 survey details.

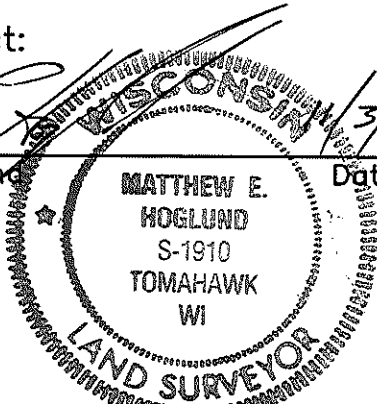


Coordinates and bearings are referenced to the Lincoln County Coordinate System as developed by the Wisconsin Department of Transportation and were determined by GPS observations on control points as supplied by Lincoln County Land Information Office or by manual survey methods, to the best of my knowledge and belief.

Certified Correct:

RECEIVED BY LINCOLN COUNTY  
 SURVEYOR THIS 4<sup>TH</sup> DAY  
 OF November 20 08  
Tony Dahl  
 COUNTY SURVEYOR

Matthew E. Hoglund Date 11/3/2008



Sec. 8