

LINCOLN COUNTY SECTION SUMMARY

LEGEND

- ☐ FOUND GRANITE MONUMENT
- ⊕ FOUND LINCOLN COUNTY MONUMENT
- ⊙ SET LINCOLN COUNTY MONUMENT
- ◇ FOUND 2" DIA. IRON PIPE
- △ COORDINATES PER ONEIDA COUNTY

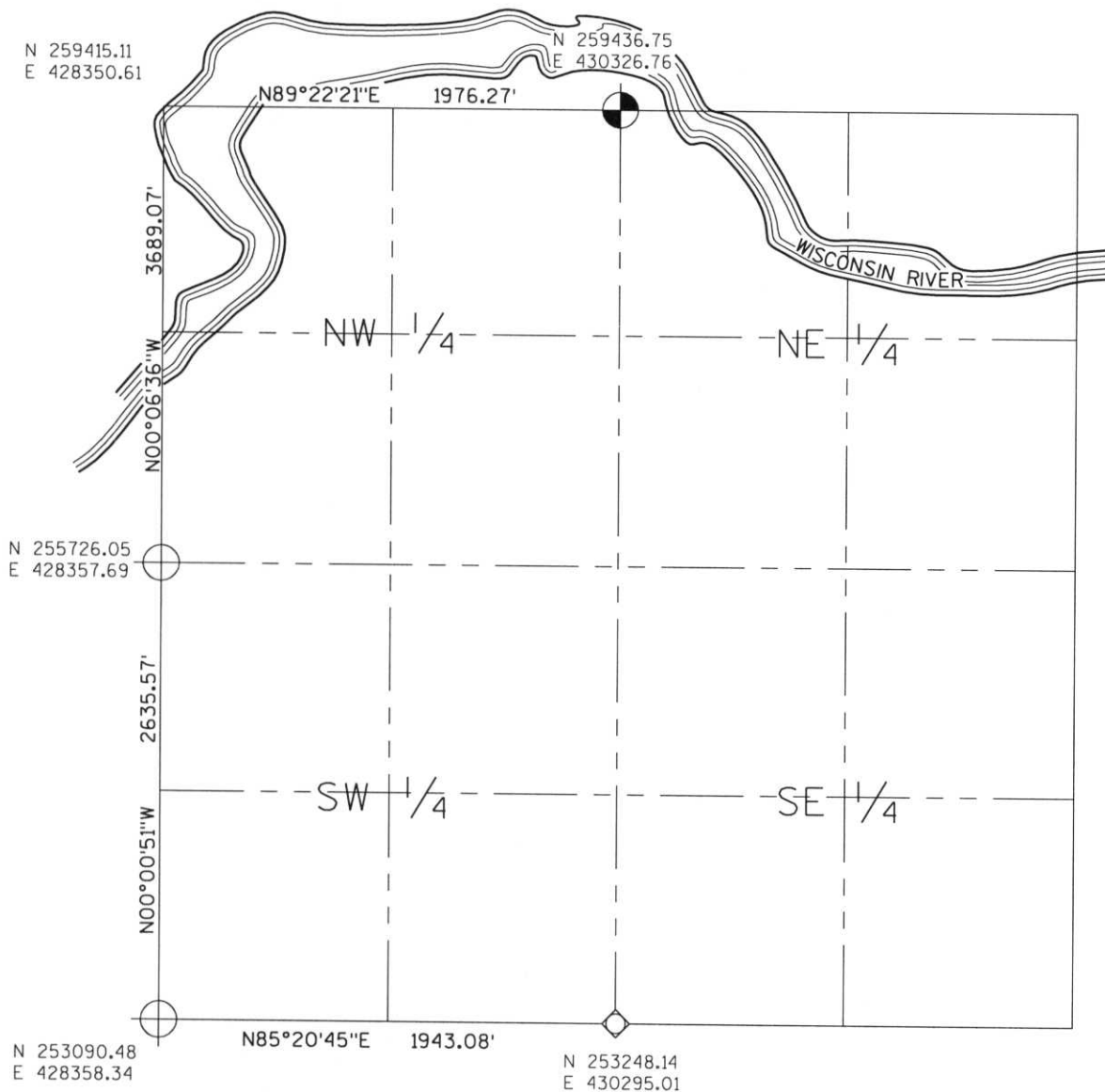
SECTION SUMMARY

06 SECTION

35N TOWNSHIP

8E RANGE

HARRISON TOWN



RECEIVED AT LINCOLN COUNTY
COURTHOUSE THIS 29th DAY
OF December 20 03
Tom A. Demuth
LAND INFORMATION OFFICE

NOTES:
COORDINATES AND BEARINGS ARE REFERENCED TO THE LINCOLN COUNTY COORDINATE SYSTEM AS DEVELOPED BY THE WISCONSIN DEPARTMENT OF TRANSPORTATION AND WERE DETERMINED BY GPS OBSERVATIONS ON CONTROL POINTS AS SUPPLIED BY THE DOT.



CERTIFIED CORRECT:

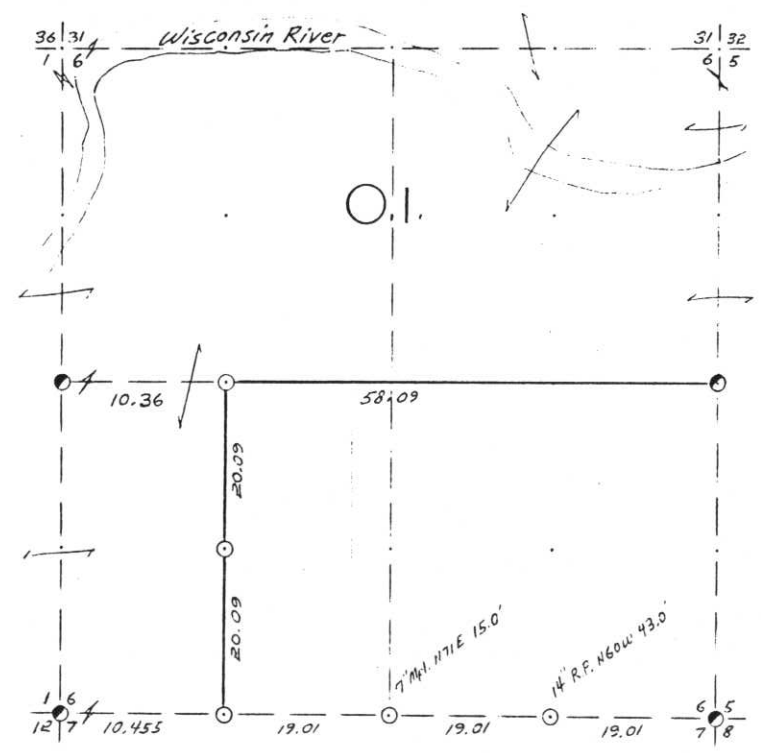
Signature: Jeffrey L. Demuth

Date: 12/22/03

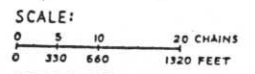
A-3, C-1, E-1, E-3
Index No. A.E.-1,5

B FILE

SEC. 6, T.35 N., R. 8 E.,
LINCOLN COUNTY, WIS.



- COR. BT. CODE
 A B C D E
 F G H I J
 K L M N O
 P Q R S T
 U V W X Y



- LEGEND: CORNERS & LINES
 ○ IRON PIPE OR CAP --- BLAZED - PAINTED
 ⊙ CONCRETE --- BLAZED
 ⊕ POST --- APPR. PAINTED
 △ STAKE --- RANDOM
 + SPIKE --- FENCE
 ● BY OTHERS

Surveyed 1954

OWENS-ILLINOIS
 TOMAHAWK (I) WISCONSIN
 FOREST PRODUCTS DIVISION

Ownership Boundary Survey
 DRAWN BY W.H. Stoth
 DATE 12/17, 86

Prepared By W.H. Stoth 3/6/87

STATEMENT Transit & Chain Surv. using corners found.

RECORDS EXAMINED _____ DWG. NO. _____

Org. Surv.
County

Received from:
Nekoosa Paper Inc.
Forest District Office
Minocqua, WI
54548

LOCAL CONTACTS _____

REMARKS _____

RECEIVED AT LINCOLN COUNTY
 COURTHOUSE THIS 18 DAY
 OF April 19 89.
Pat Priebe
 TAX DESCRIPTION OFFICE