




LINCOLN COUNTY SECTION SUMMARY

LEGEND

- FOUND GRANITE MONUMENT
-  FOUND LINCOLN COUNTY MONUMENT
-  SET LINCOLN COUNTY MONUMENT
-  COORDINATES PER ONEIDA COUNTY

SECTION SUMMARY

05
SECTION

35N
TOWNSHIP

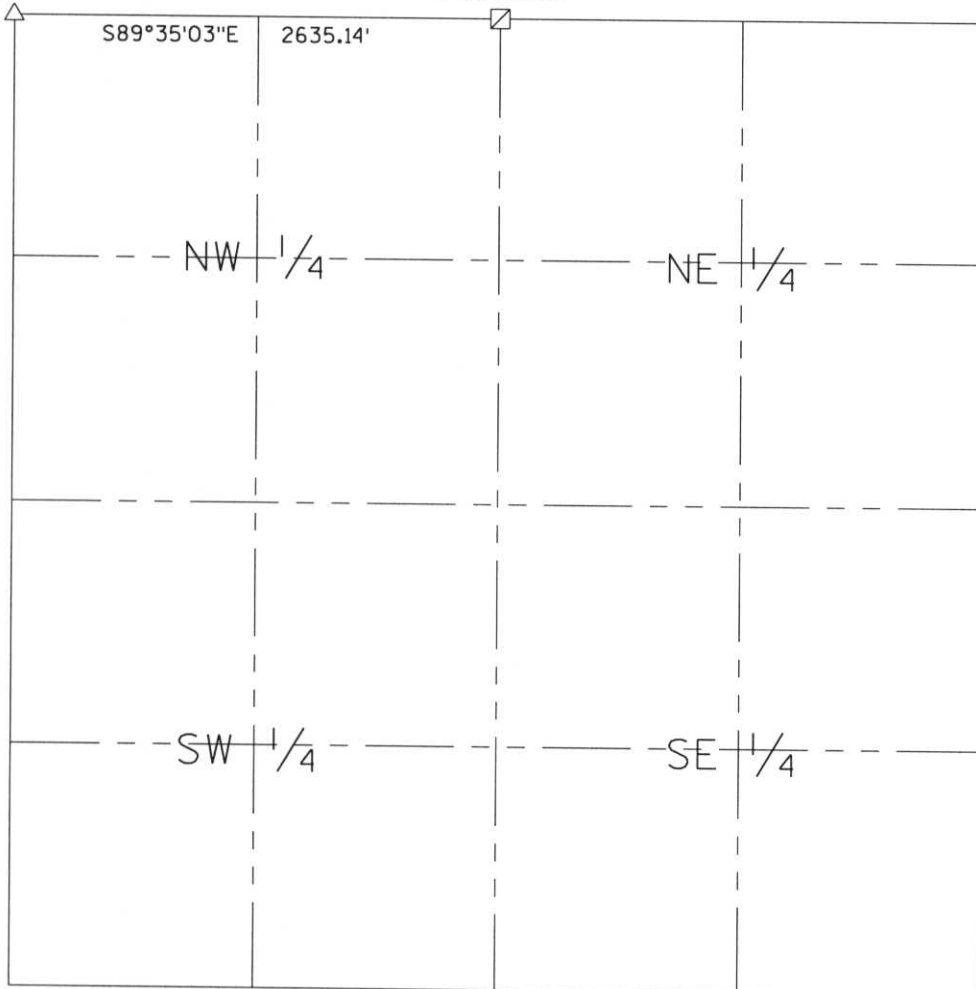
8E
RANGE

HARRISON
TOWN



N 259465.35
E 432938.13

N 259446.23
E 435573.20



RECEIVED AT LINCOLN COUNTY
 COURTHOUSE THIS 29th DAY
 OF December 20 03
Tanya A. Rasmussen
 LAND INFORMATION OFFICE

NOTES:
 COORDINATES AND BEARINGS ARE REFERENCED TO THE LINCOLN COUNTY COORDINATE SYSTEM AS DEVELOPED BY THE WISCONSIN DEPARTMENT OF TRANSPORTATION AND WERE DETERMINED BY GPS OBSERVATIONS ON CONTROL POINTS AS SUPPLIED BY THE DOT.



CERTIFIED CORRECT:

Jeffrey L. Demuth
 Signature

12/22/03
 Date

Index No. AE-59

A-5, A-7

B FILE

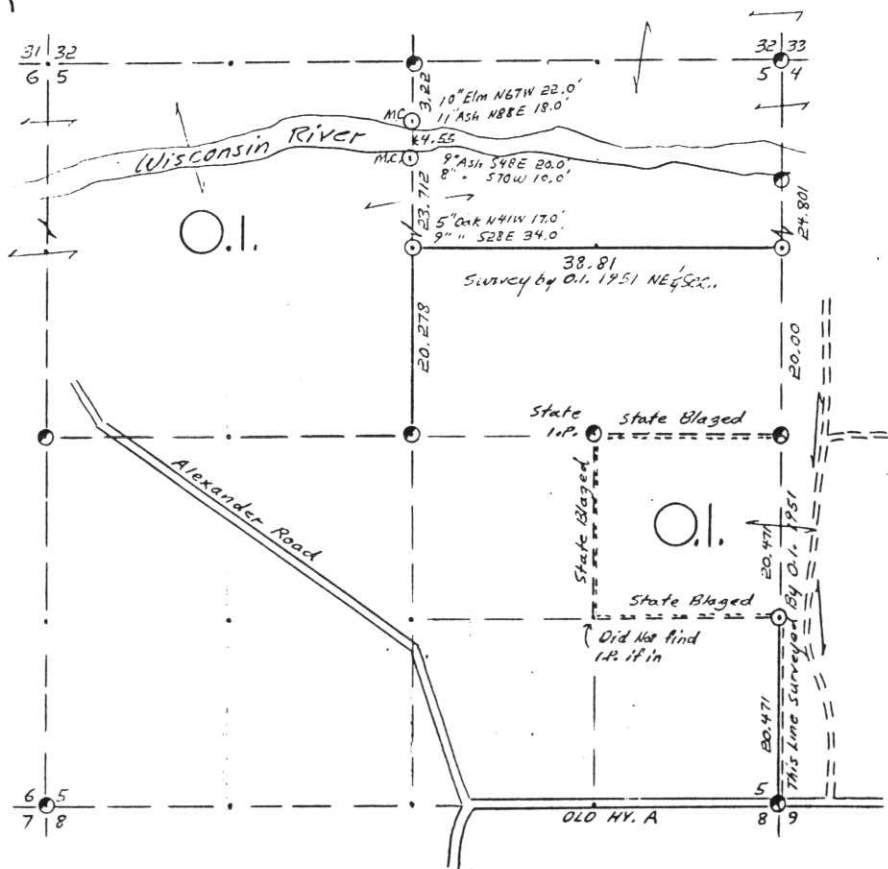
OWENS-ILLINOIS

DATE 2/27/76

T.35 N R. 8 E SEC. 5

LINCOLN COUNTY, WIS.

STATEMENT Transit & Chain Surv. - some Compass -
using corners found



- LEGEND CORNERS & LINES
- Iron Pipe or Cap
 - ⊗ Concrete
 - ⊕ Wood Post
 - △ Stake
 - X Hub
 - + Spike
 - BY OTHERS

- MAP BY W.H. Stuth Survey By O.I. (Stuth & Theiler) N.E.S.E. Scale 1 1/2" = 1320.0'
- True Blazed Painted
 - True Cut - Blazed
 - Approximate - Painted
 - Random
 - xxxxx Fence
 - R.O.W.

RECORDS EXAMINED _____ DWG. NO. _____
Org. Surv.
County

Received from:
Dickson Papers Inc.
Forest District Office
Menocqua, W4
54348

LOCAL CONTACTS _____

REMARKS _____

Prepared By W.H. Stuth 3/6/87

RECEIVED AT LINCOLN COUNTY
COURTHOUSE THIS 18 DAY
OF April 19 89.
Pat Prebe
TAX DESCRIPTION CHIE