



LINCOLN COUNTY SECTION SUMMARY

LEGEND

- FOUND GRANITE MONUMENT
-  FOUND LINCOLN COUNTY MONUMENT
-  SET LINCOLN COUNTY MONUMENT
- COORDINATES PER ONEIDA COUNTY

SECTION SUMMARY

04
SECTION

35N
TOWNSHIP

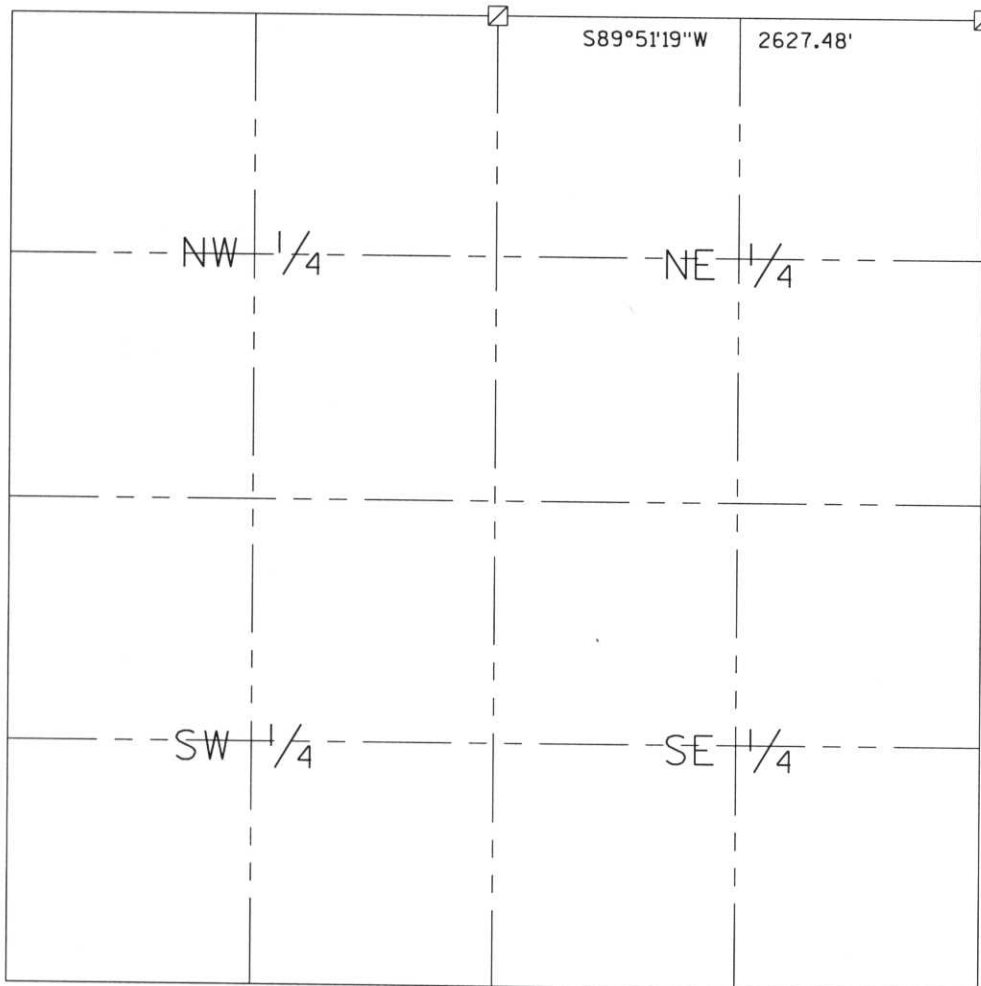
8E
RANGE

HARRISON
TOWN



N 259420.33
E 440832.85

N 259426.97
E 443460.32



RECEIVED AT LINCOLN COUNTY
COURTHOUSE THIS 29th DAY
OF December 20 03
Jeana A. Roman
LAND INFORMATION OFFICE

NOTES:
COORDINATES AND BEARINGS ARE REFERENCED TO THE LINCOLN COUNTY COORDINATE SYSTEM AS DEVELOPED BY THE WISCONSIN DEPARTMENT OF TRANSPORTATION AND WERE DETERMINED BY GPS OBSERVATIONS ON CONTROL POINTS AS SUPPLIED BY THE DOT.



CERTIFIED CORRECT:

Jeffrey L. Demuth
Signature

12/22/03
Date

Index No. A, E - 9, 13

A-11, A-13

B FILE

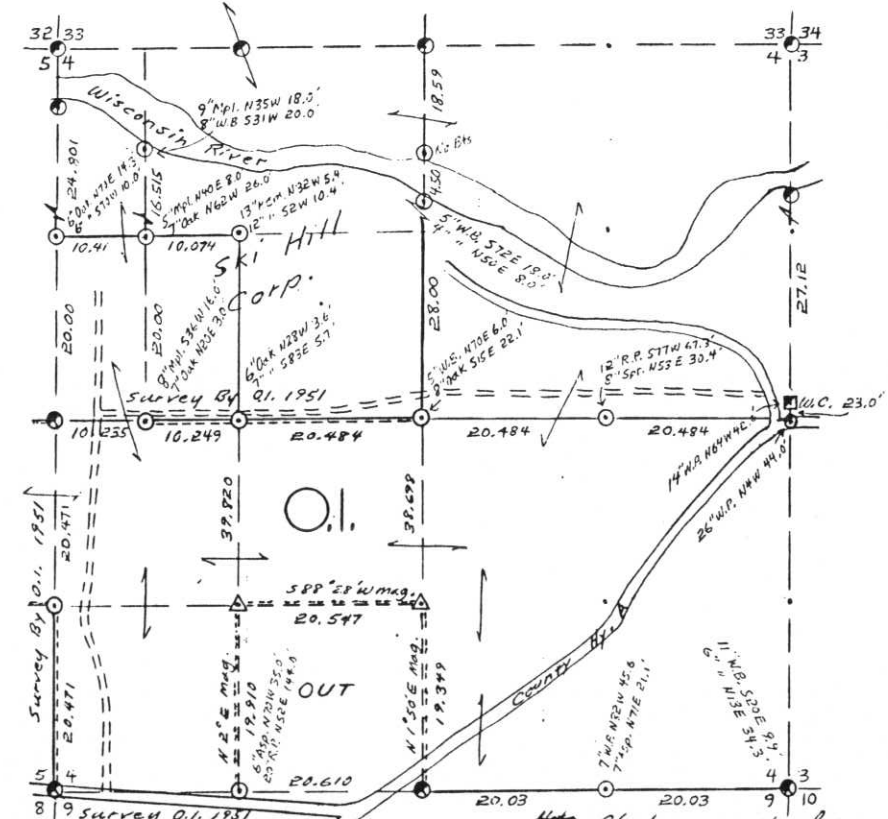
OWENS-ILLINOIS

DATE 2/27/76

T.35 N R. 8 E SEC. 4

LINCOLN COUNTY, WIS.

Compass & Chain SE-SW



- LEGEND CORNERS & LINES**
- Iron Pipe or Cap
 - Concrete
 - ⊕ Wood Post
 - △ Stake
 - × Hub
 - + Spike
 - By Others
- LINES**
- True - Blazed - Painted
 - True Cut - Blazed
 - - - Approximate - Painted
 - Random
 - xxxxx Fence
 - - - R.O.W.
- MAP BY**
W.H. Stuth
Survey By Oil.
(Stuth & Theiler)
SE-SW
- Scale 1 1/2" = 1320.0'

Prepared By W.H. Stuth 3/6/87

STATEMENT Transit & Chain Surv. - some Compass - using corners found

RECORDS EXAMINED _____ DWG. NO. _____
Org. Surv.
County

Received from:
Dekoosa Papers Linc
Forest District Office
Menocqua, WJ
054348

LOCAL CONTACTS _____

REMARKS
RECEIVED AT LINCOLN COUNTY
COURTHOUSE THIS 18 DAY
OF April 19 89
Pat Kreebe
TAX DESCRIPTION OFF. E

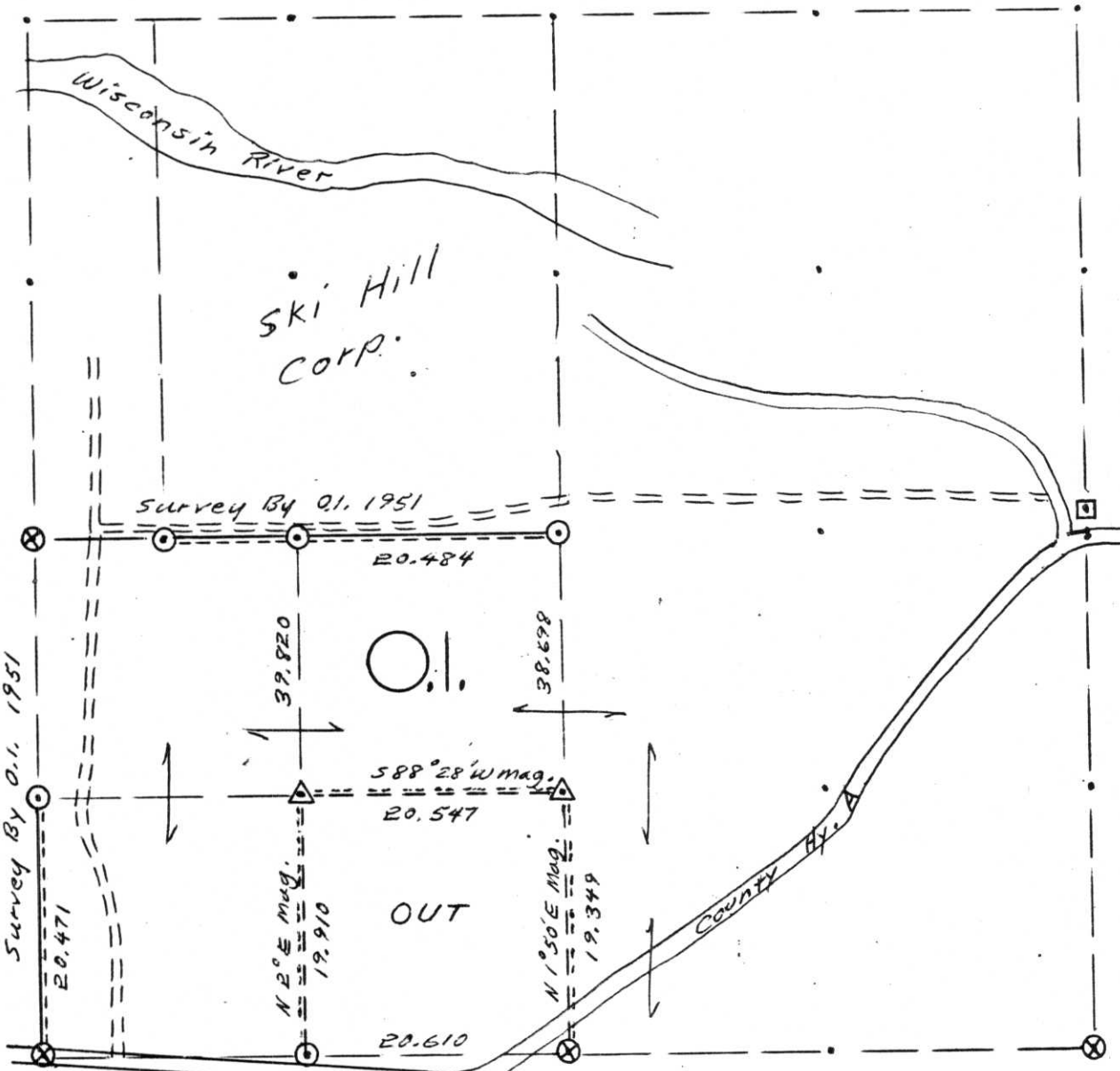
C

DATE 2/27/76

T.35 N R. 8 E SEC. 4

LINCOLN COUNTY, WIS.

Compass & Chain SE-SW



Note Check survey notes for previous survey info. on Section

LEGEND CORNERS & LINES

- Iron Pipe or Cap
- ⊗ Concrete
- ⬠ Wood Post
- △ Stake
- X Hub
- + Spike
- ===== True-Blazed-Painted
- ===== True Cut - Blazed
- Approximate - Painted
- Random
- xxxxx Fence
- - - R.O.W.

MAP BY
 W.H. Stuth
 Survey By O.I.
 Stuth & Theiler

Scale 1 1/2" = 1320.0'

A-E, 9-13