



LINCOLN COUNTY SECTION SUMMARY

LEGEND

- FOUND GRANITE MONUMENT
-  FOUND ONEIDA COUNTY MONUMENT
-  SET LINCOLN COUNTY MONUMENT
- △ COORDINATES PER ONEIDA COUNTY

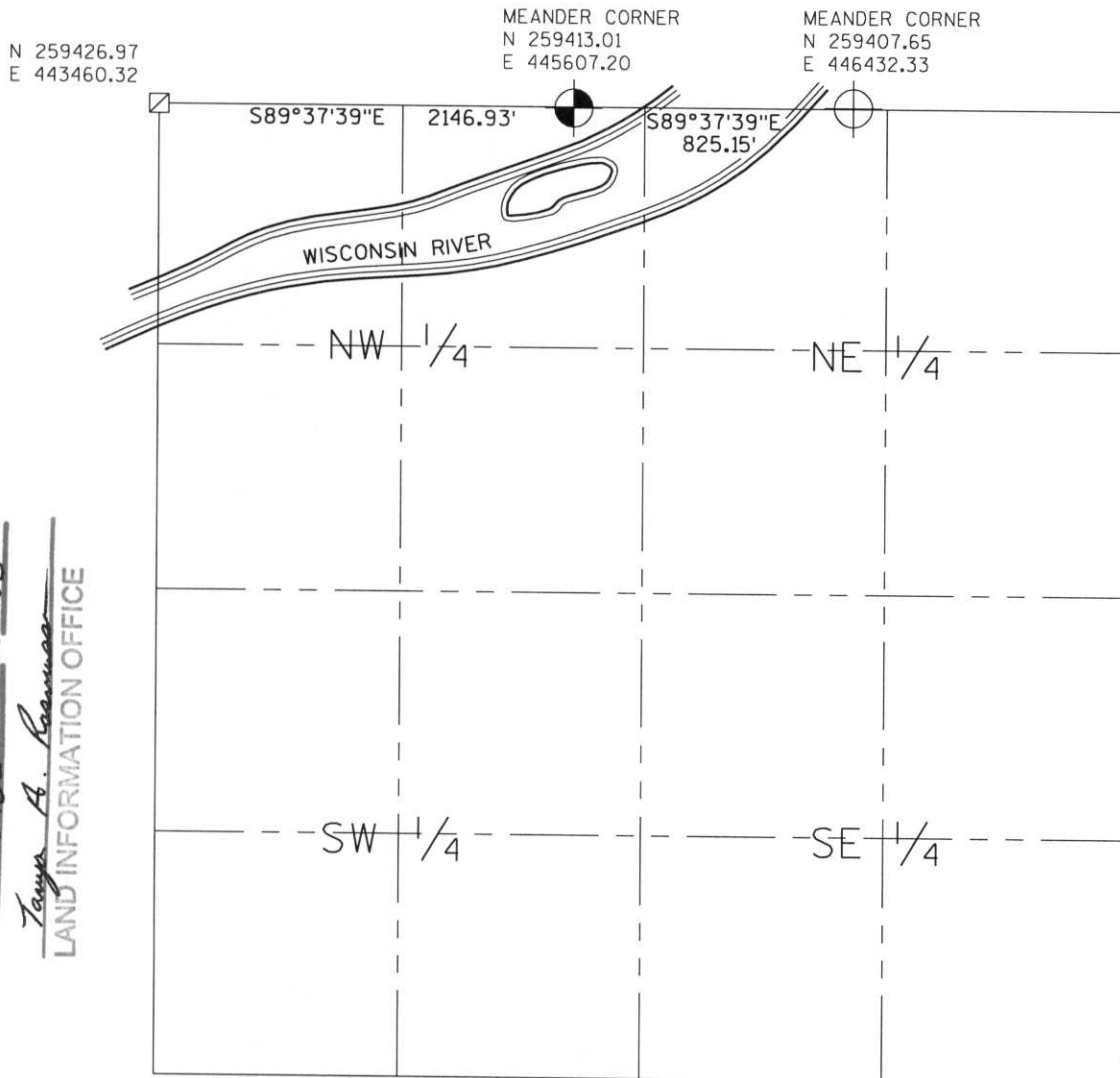
SECTION SUMMARY

03 SECTION

35N TOWNSHIP

8E RANGE

HARRISON TOWN



RECEIVED AT LINCOLN COUNTY
COURTHOUSE THIS 29th DAY
OF December 20 03
Tanya A. Rasmussen
LAND INFORMATION OFFICE

NOTES:
COORDINATES AND BEARINGS ARE REFERENCED TO THE LINCOLN COUNTY COORDINATE SYSTEM AS DEVELOPED BY THE WISCONSIN DEPARTMENT OF TRANSPORTATION AND WERE DETERMINED BY GPS OBSERVATIONS ON CONTROL POINTS AS SUPPLIED BY THE DOT.



CERTIFIED CORRECT:

Jeffrey L. Demuth
Signature

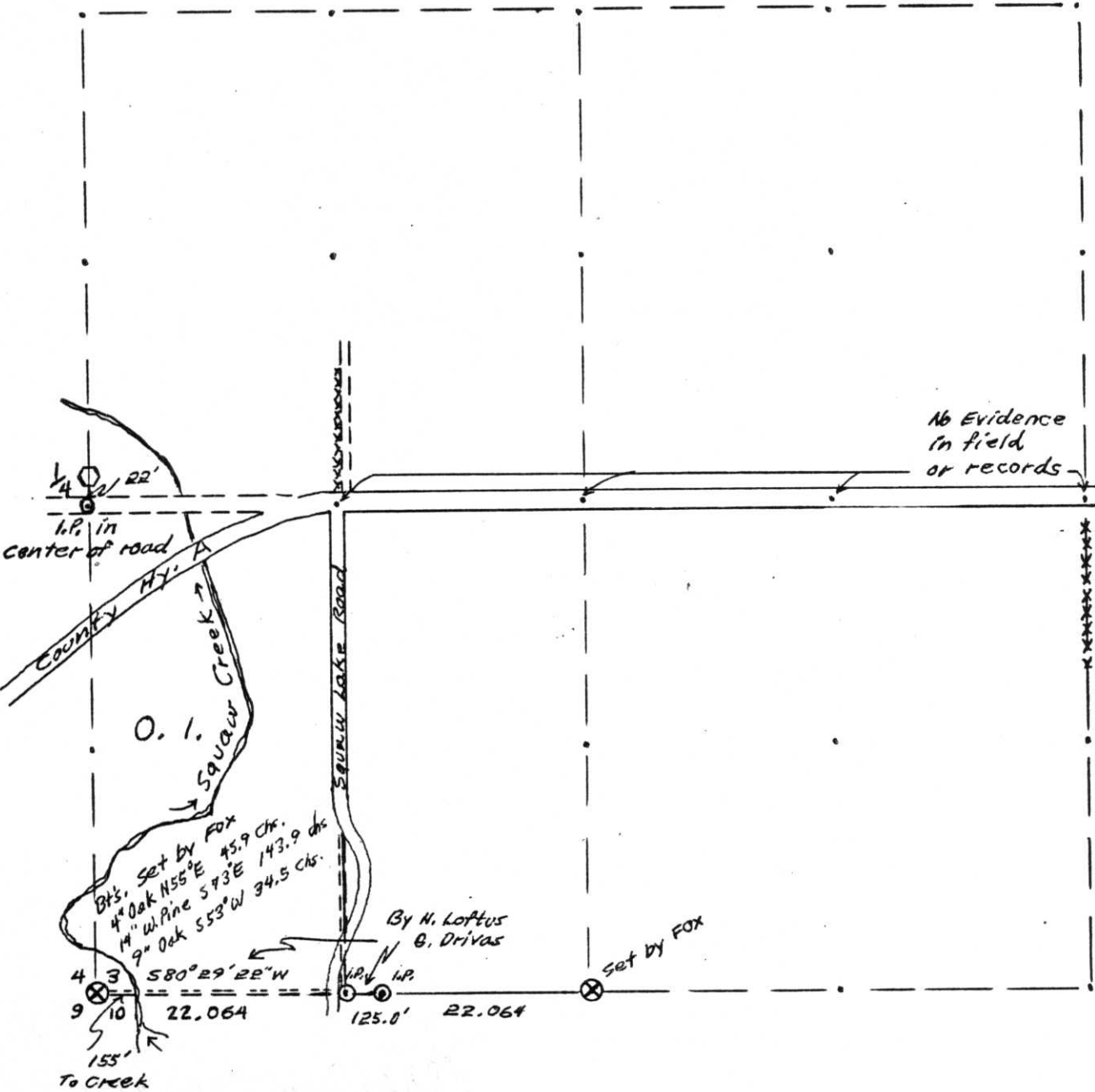
12/22/03
Date

Index No. A, E - 13, 17

A-13, A-14, 15, A-15, 16

T. 35 N R. 8 E SEC. 3

LINCOLN COUNTY, WIS.



LEGEND CORNERS & LINES

- ⊙ Iron Pipe or Cap
- ⊗ Concrete - Marble
- ⊕ Wood Post
- △ Stake
- X Hub
- + Spike
- Location Post

- ===== True - Blazed - Painted
- True Cut - Blazed
- ==== Approximate - Painted
- Random
- xxxxx Fence
- .-.- R. O. W.

MAP BY

W. H. Stuth
 Surveyed By O.I.
 Stuth & Weber

Scale 1 1/2" = 1320.0'

A-E, 13-17

A-E, 13-17

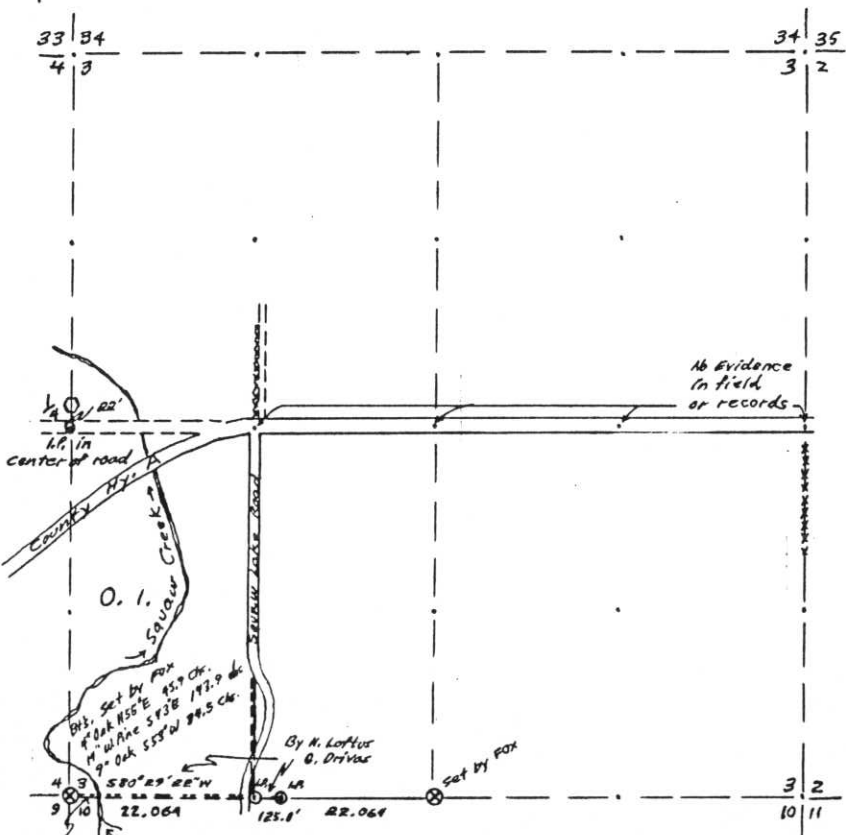
B FILE

OWENS-ILLINOIS

DATE 5/3/74

T. 35 N R. 8 E SEC. 3

LINCOLN COUNTY, WIS.



LEGEND CORNERS & LINES

- Iron Pipe or Cap
- ⊗ Concrete - Marble
- ⊕ Wood Post
- △ Stake
- X Hub
- + Spike
- Location Post
- ==== True-Blazed-Painted
- ===== True Cut - Blazed
- Approximate - Painted
- Random
- xxxxx Fence
- - - - R. O. W.

MAP BY

W. H. Stuth
Surveyed By O. I.
Stuth & Weber

Scale 1 1/2" = 1320.0'

Prepared By W. H. Stuth 3/6/87

STATEMENT Compass Surv. using corners found

RECORDS EXAMINED _____ DWG. NO. _____

County

Norman Loftus RLS.

Received from:

Nekoosa Papers Inc
Forest District Office
Minocqua, WI
54548

LOCAL CONTACTS _____

REMARKS _____

RECEIVED AT LINCOLN COUNTY
COURTHOUSE THIS 18 DAY
OF April 19 89.

Pat Dreebe

TAX DESCRIPTION OFFICE