

LINCOLN COUNTY SECTION SUMMARY

LEGEND

- ☐ FOUND GRANITE MONUMENT
- ⊕ FOUND ONEIDA COUNTY MONUMENT
- ⊙ SET LINCOLN COUNTY MONUMENT
- ◇ FOUND 2" DIA. IRON PIPE
- △ COORDINATES PER ONEIDA COUNTY

SECTION SUMMARY

01
SECTION

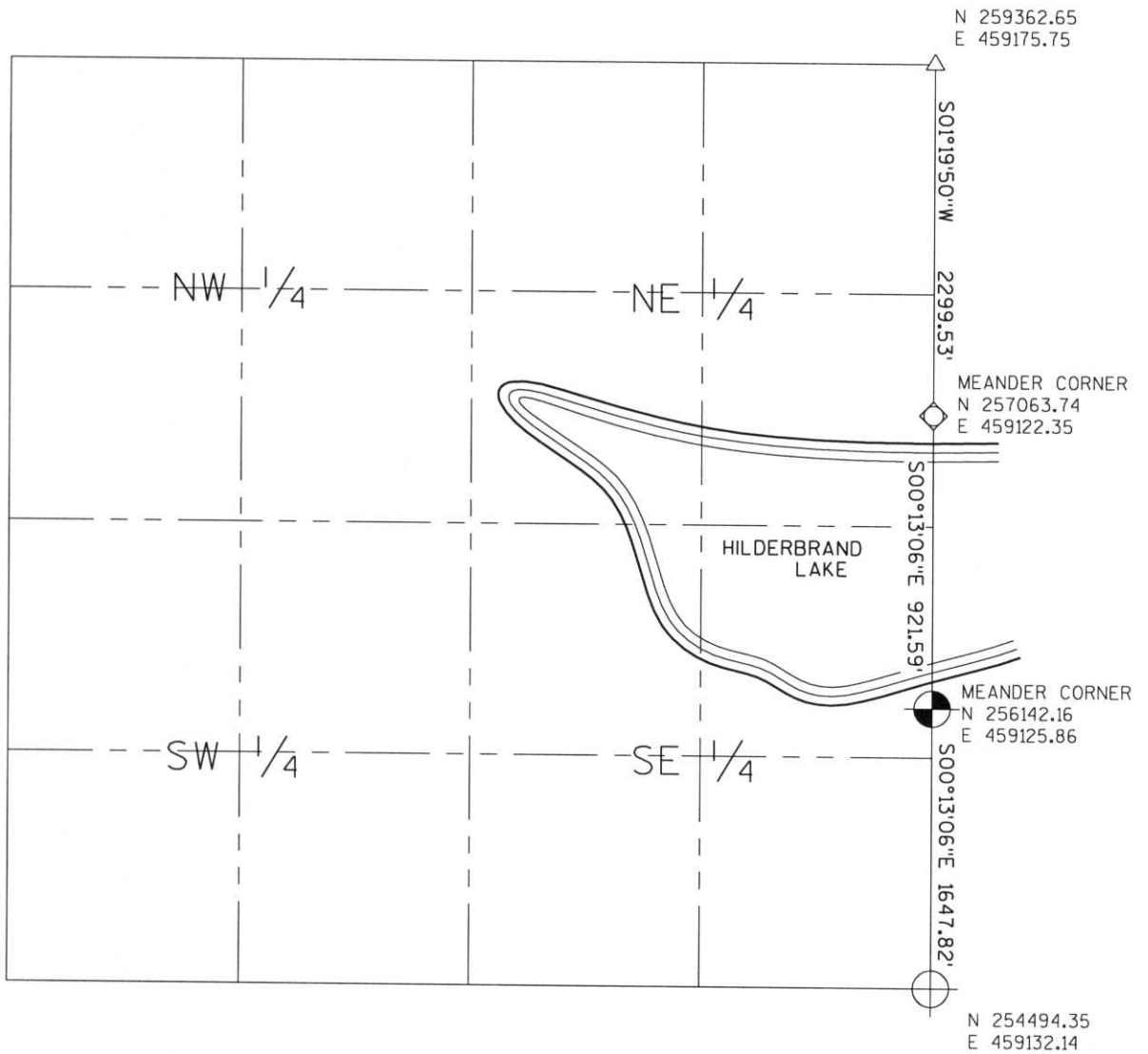
35N
TOWNSHIP

8E
RANGE

HARRISON
TOWN



RECEIVED AT LINCOLN COUNTY
COURTHOUSE THIS 29th DAY
OF December 20 03
Tanya A. Korman
LAND INFORMATION OFFICE



NOTES:
COORDINATES AND BEARINGS ARE REFERENCED TO THE LINCOLN COUNTY COORDINATE SYSTEM AS DEVELOPED BY THE WISCONSIN DEPARTMENT OF TRANSPORTATION AND WERE DETERMINED BY GPS OBSERVATIONS ON CONTROL POINTS AS SUPPLIED BY THE DOT.

CERTIFIED CORRECT:

Signature: *Jeffrey L. Demuth*

Date: 12/22/03



H-25, D, C-25, G, V-25
Index No. A, E-25, 21, 25