

LINCOLN COUNTY SECTION SUMMARY

LEGEND

- ☐ FOUND GRANITE MONUMENT
- ⊕ FOUND LINCOLN COUNTY MONUMENT
- ◐ SET LINCOLN COUNTY MONUMENT
- △ COORDINATES PER ONEIDA COUNTY

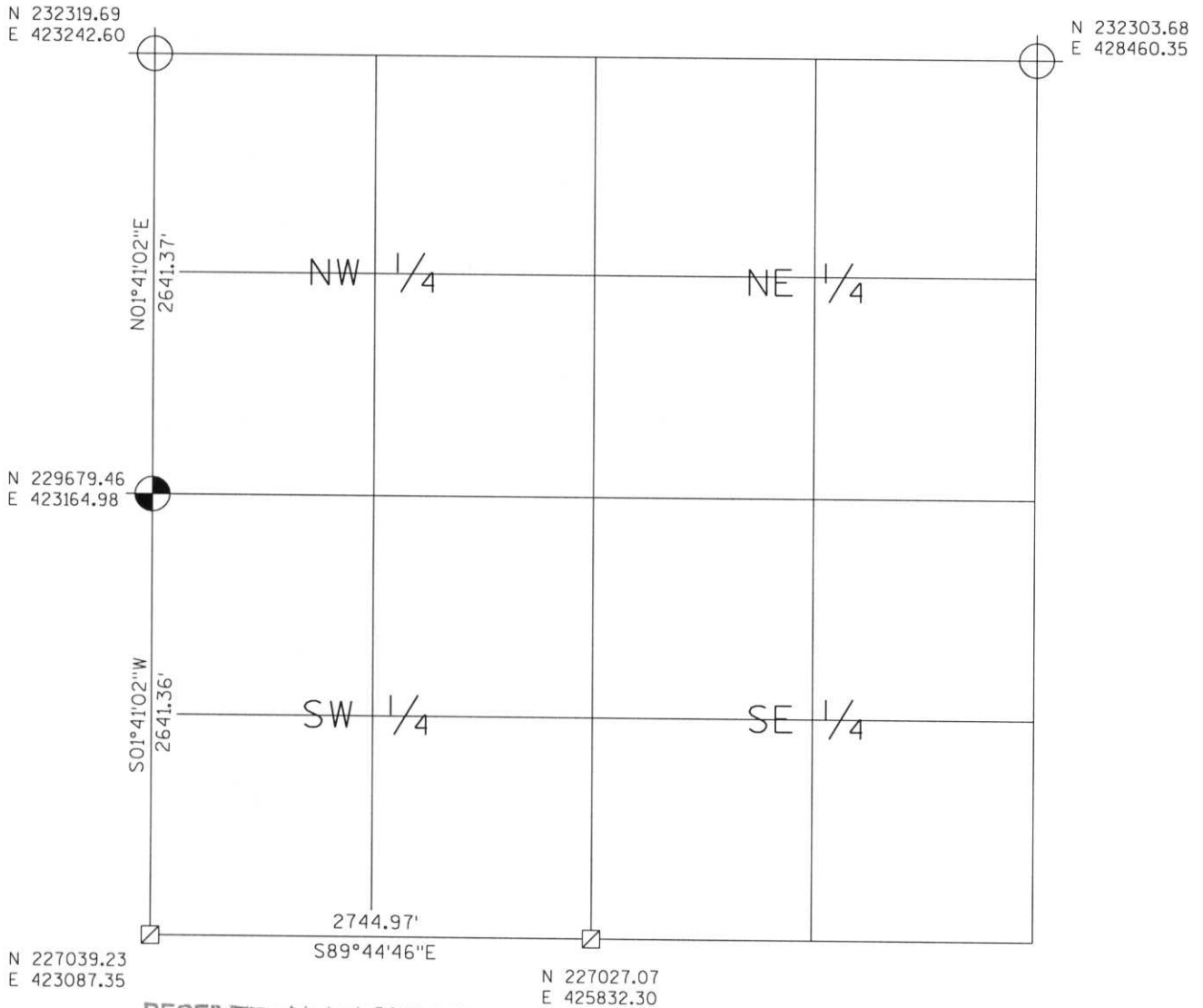
SECTION SUMMARY

36
SECTION

35N
TOWNSHIP

7E
RANGE

KING
TOWN



RECEIVED AT LINCOLN COUNTY
COURTHOUSE THIS 19TH DAY
OF December 20 03
Tony Dahl
LAND INFORMATION OFFICE



NOTES:
COORDINATES AND BEARINGS ARE REFERENCED TO THE LINCOLN COUNTY COORDINATE SYSTEM AS DEVELOPED BY THE WISCONSIN DEPARTMENT OF TRANSPORTATION AND WERE DETERMINED BY GPS OBSERVATIONS ON CONTROL POINTS AS SUPPLIED BY THE DOT.

CERTIFIED CORRECT:

Signature Jeffrey L. Demuth Date 12/19/03

Index No. 0-9, 21-25