


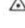


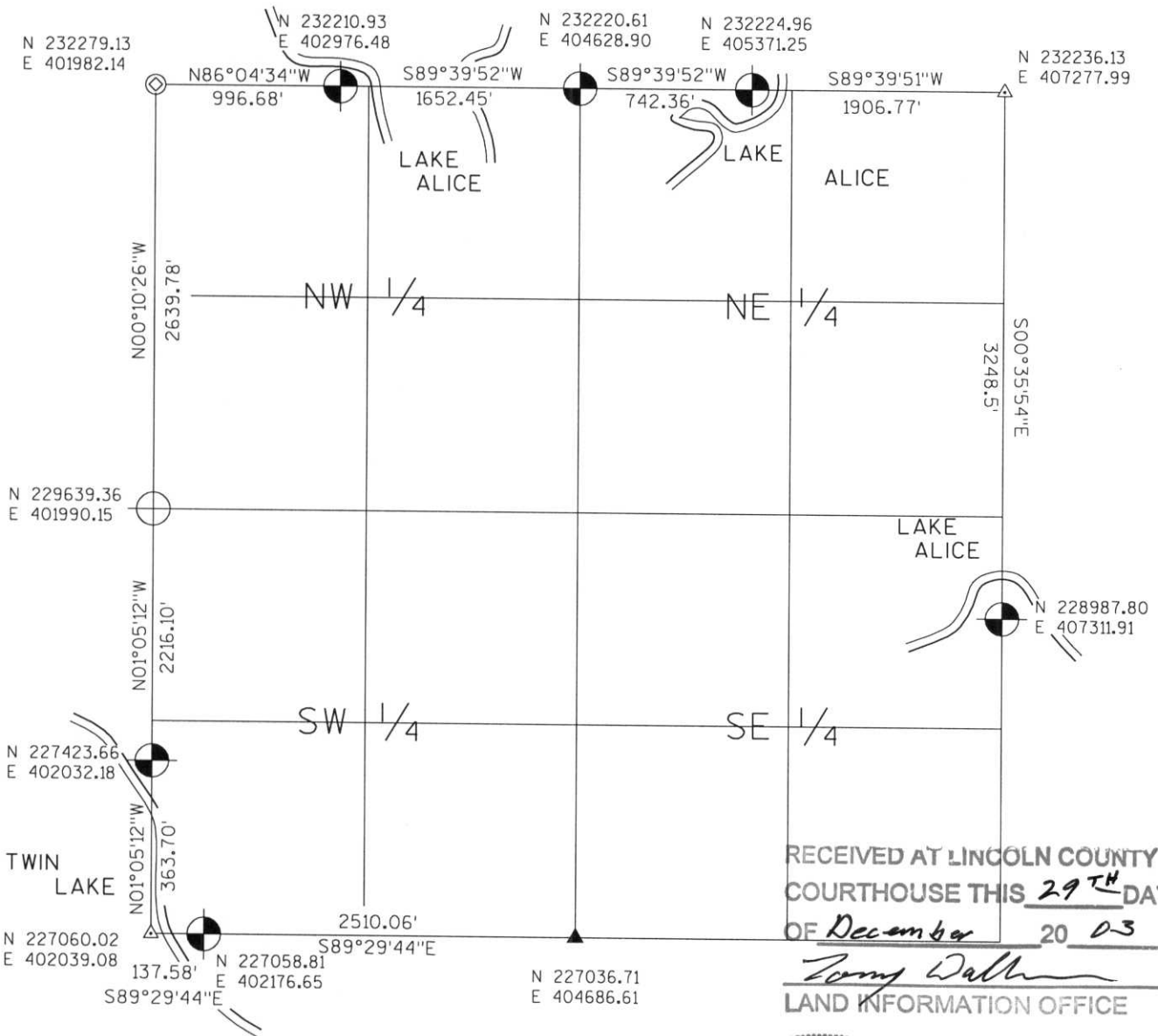


LINCOLN COUNTY SECTION SUMMARY

LEGEND

- FOUND GRANITE MONUMENT
-  FOUND LINCOLN COUNTY MONUMENT
-  SET LINCOLN COUNTY MONUMENT
-  COORDINATES PER ONEIDA COUNTY
-  COMPUTED COORDINATES
-  P.K. NAIL, FOUND
-  1/2" I.P. FOUND

SECTION SUMMARY 32 SECTION — 35N TOWNSHIP — 7E RANGE
KING TOWN



NOTES:
 COORDINATES AND BEARINGS ARE REFERENCED TO THE LINCOLN COUNTY COORDINATE SYSTEM AS DEVELOPED BY THE WISCONSIN DEPARTMENT OF TRANSPORTATION AND WERE DETERMINED BY GPS OBSERVATIONS ON CONTROL POINTS AS SUPPLIED BY THE DOT.



CERTIFIED CORRECT:

Jeffrey L. Demuth 12/19/03
 Signature Date

Index No. 0-4, 5-9