





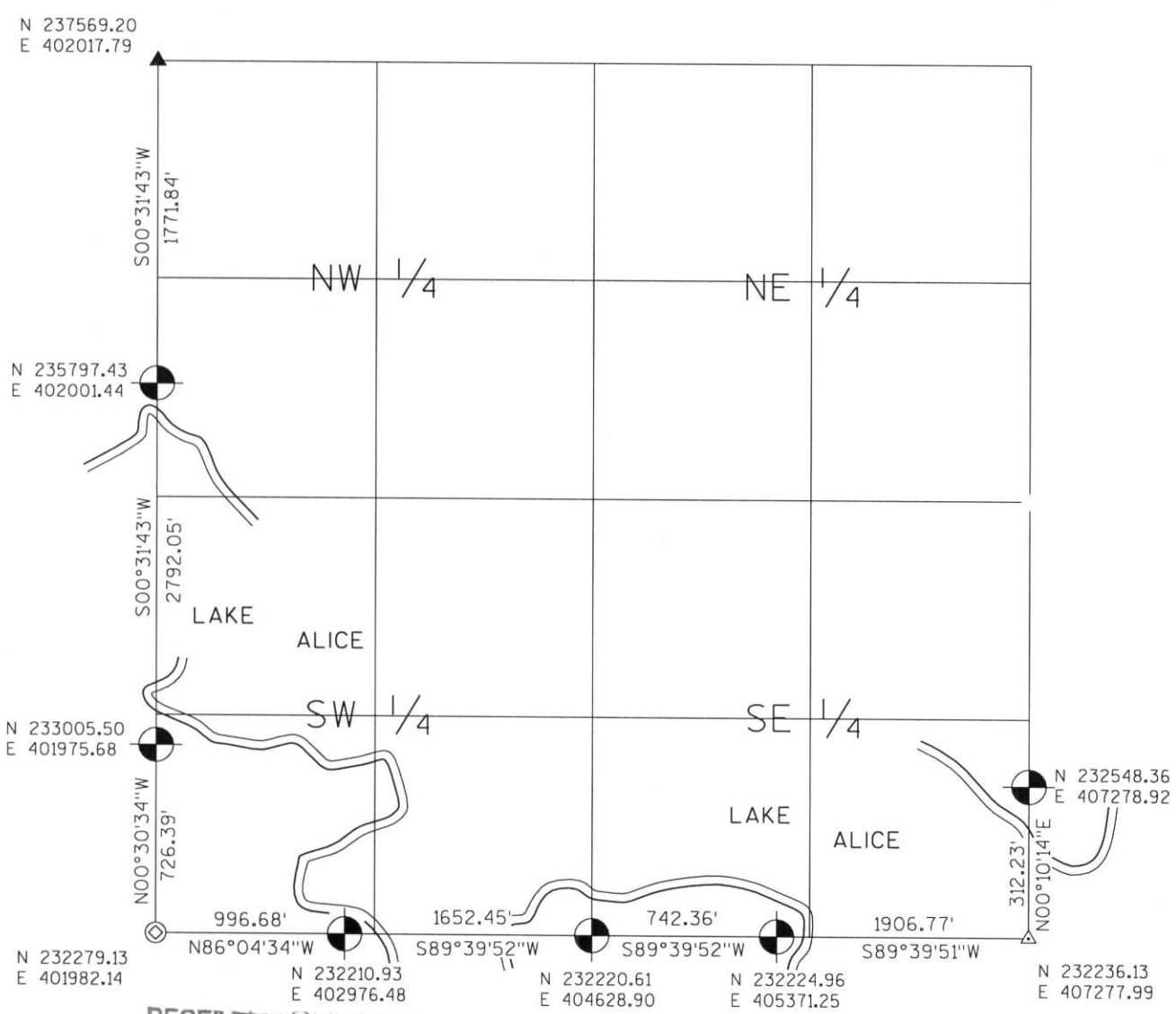


# LINCOLN COUNTY SECTION SUMMARY

**LEGEND**

- FOUND GRANITE MONUMENT
-  FOUND LINCOLN COUNTY MONUMENT
-  SET LINCOLN COUNTY MONUMENT
-  COORDINATES PER ONEIDA COUNTY
-  P.K. NAIL, FOUND
-  1/2" I.P. FOUND
-  COMPUTED COORDINATES

SECTION SUMMARY    29    —    35N    —    7E  
SECTION    TOWNSHIP    RANGE  
KING  
TOWN



**RECEIVED AT LINCOLN COUNTY COURTHOUSE THIS 19<sup>TH</sup> DAY OF December 20 03**  
*Tony Dahl*



NOTES:  
 COORDINATES AND BEARINGS ARE REFERENCED TO THE LINCOLN COUNTY COORDINATE SYSTEM AS DEVELOPED BY THE WISCONSIN DEPARTMENT OF TRANSPORTATION AND WERE DETERMINED BY GPS OBSERVATIONS ON CONTROL POINTS AS SUPPLIED BY THE DOT.

CERTIFIED CORRECT:

*Jeffrey L. Demuth*      12/19/03  
 Signature      Date

Index No. Q-U:5-9