






# LINCOLN COUNTY SECTION SUMMARY

**LEGEND**

-  FOUND GRANITE MONUMENT
-  FOUND LINCOLN COUNTY MONUMENT
-  SET LINCOLN COUNTY MONUMENT
-  COORDINATES PER ONEIDA COUNTY
-  COMPUTED COORDINATES

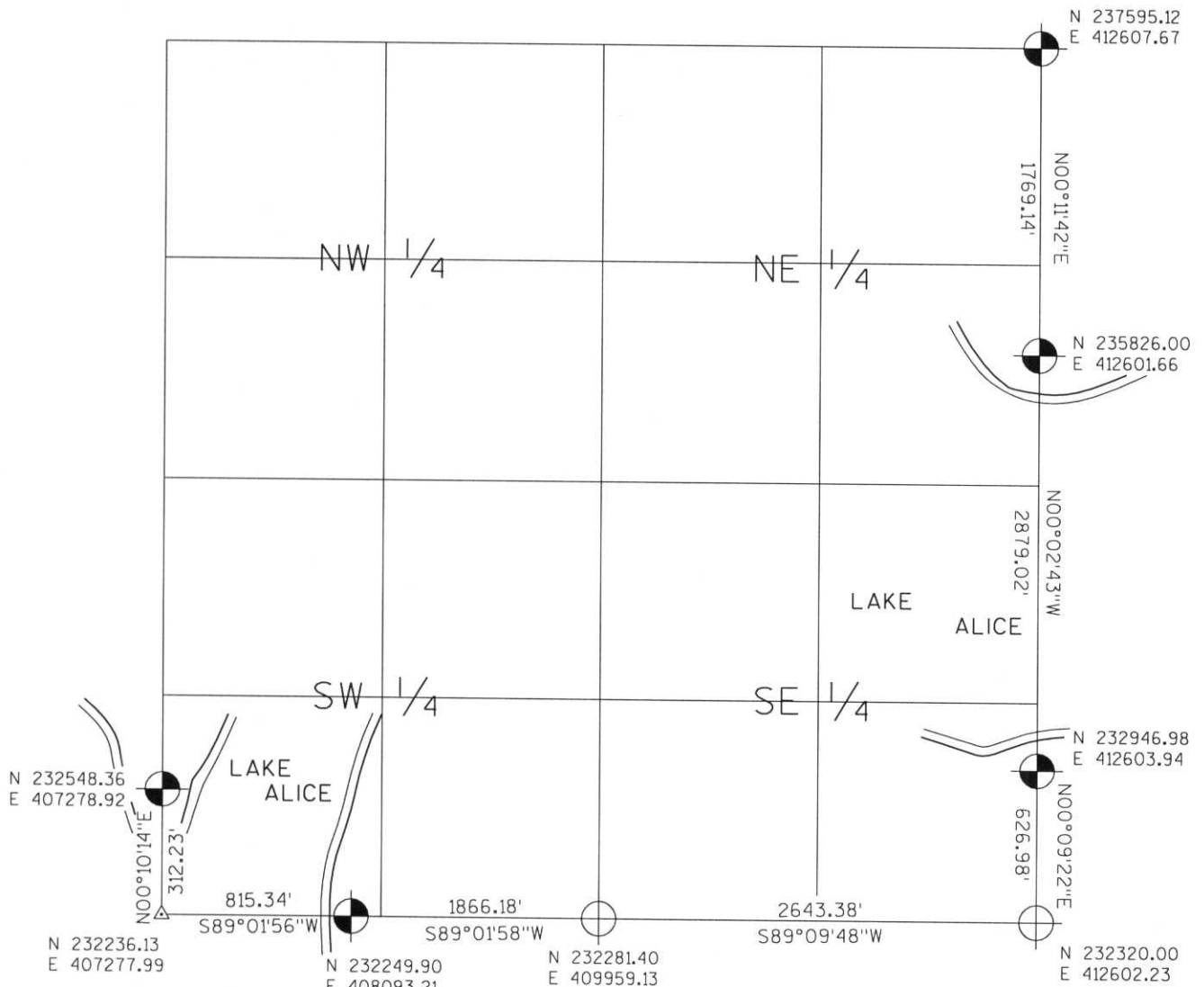
SECTION SUMMARY

28  
SECTION

35N  
TOWNSHIP

7E  
RANGE

KING  
TOWN



RECEIVED AT LINCOLN COUNTY  
COURTHOUSE THIS 19<sup>TH</sup> DAY  
OF December 20 03  
*Tommy Dallen*  
LAND INFORMATION OFFICE



NOTES:  
COORDINATES AND BEARINGS ARE REFERENCED TO THE LINCOLN COUNTY COORDINATE SYSTEM AS DEVELOPED BY THE WISCONSIN DEPARTMENT OF TRANSPORTATION AND WERE DETERMINED BY GPS OBSERVATIONS ON CONTROL POINTS AS SUPPLIED BY THE DOT.

CERTIFIED CORRECT:

*Jeffrey L. Demuth* 12/19/03  
Signature Date

Index No. Q-U: 9-13