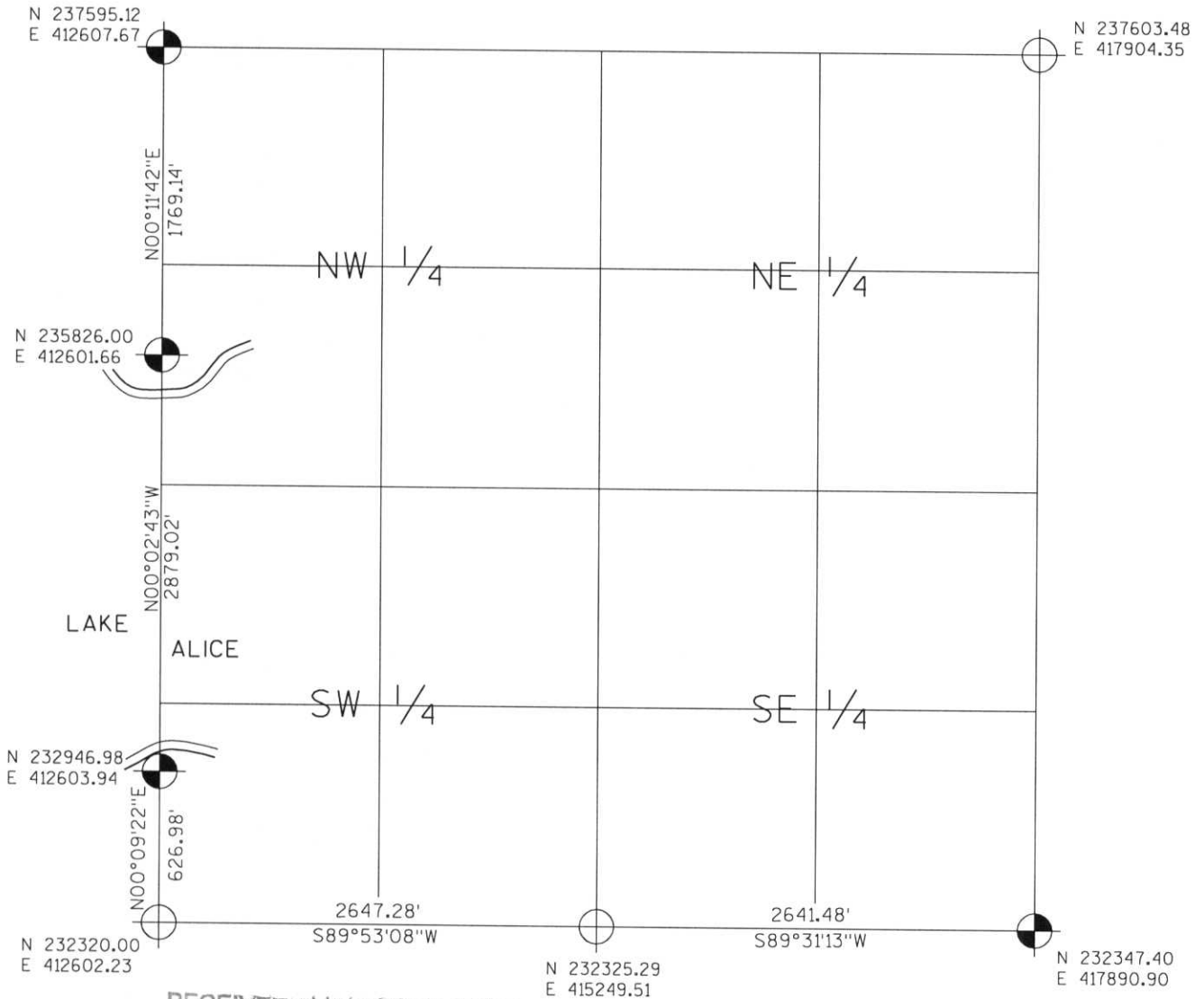


# LINCOLN COUNTY SECTION SUMMARY

**LEGEND**

- FOUND GRANITE MONUMENT
- FOUND LINCOLN COUNTY MONUMENT
- SET LINCOLN COUNTY MONUMENT
- COORDINATES PER ONEIDA COUNTY

SECTION SUMMARY     27     —     35N     —     7E  
SECTION     TOWNSHIP     RANGE  
KING  
TOWN



RECEIVED AT LINCOLN COUNTY  
 COURTHOUSE THIS 19<sup>TH</sup> DAY  
 OF December 20 03  
*Tony Dahl*  
 LAND INFORMATION OFFICE



NOTES:  
 COORDINATES AND BEARINGS ARE REFERENCED TO THE LINCOLN COUNTY COORDINATE SYSTEM AS DEVELOPED BY THE WISCONSIN DEPARTMENT OF TRANSPORTATION AND WERE DETERMINED BY GPS OBSERVATIONS ON CONTROL POINTS AS SUPPLIED BY THE DOT.

CERTIFIED CORRECT:

Signature: *Jeffrey L. Demuth*     Date: 12/19/03

Index No. Q-0:13-17