

LINCOLN COUNTY SECTION SUMMARY

LEGEND

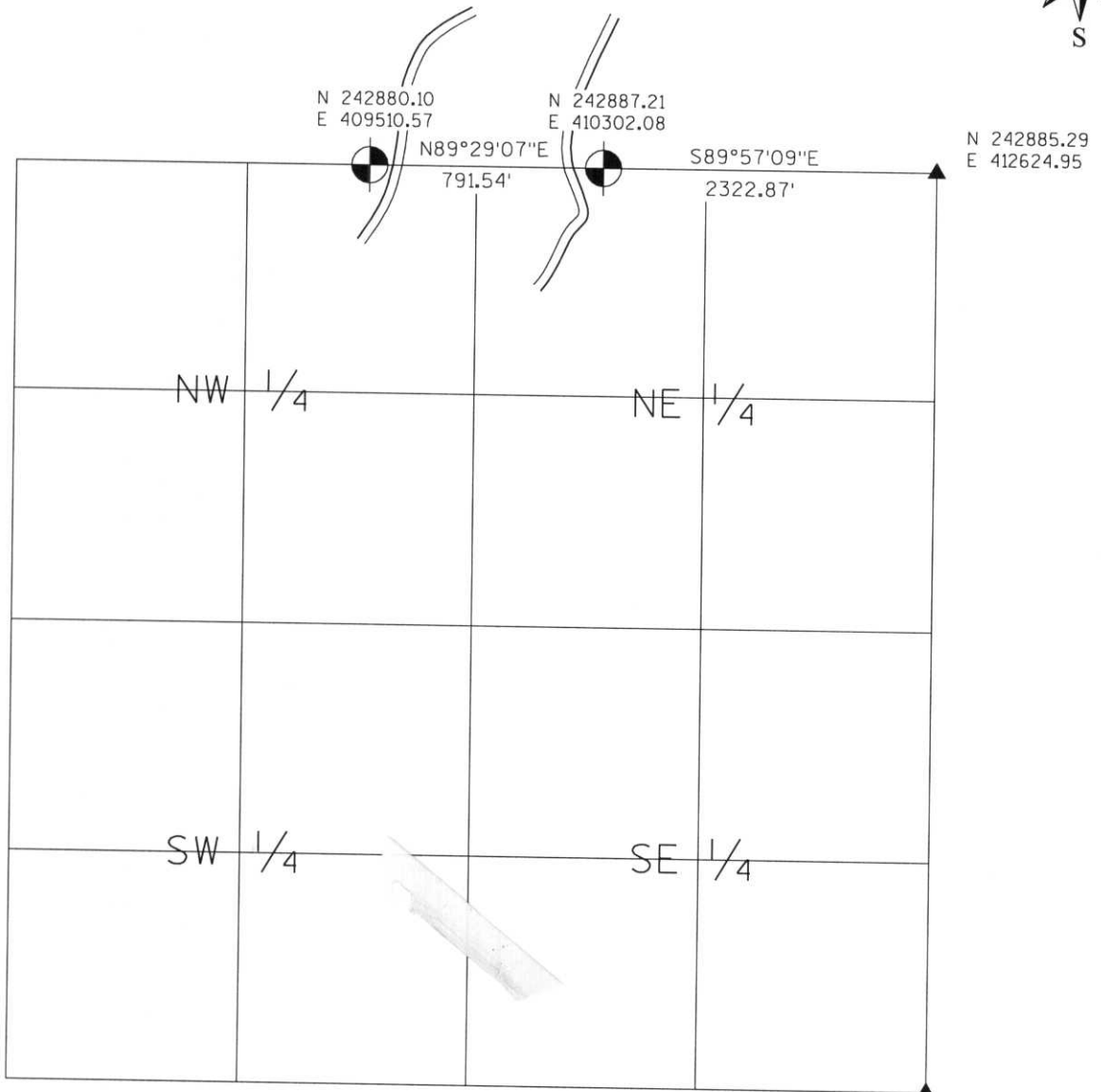
- ☐ FOUND GRANITE MONUMENT
- ⊕ FOUND LINCOLN COUNTY MONUMENT
- ⊙ SET LINCOLN COUNTY MONUMENT
- △ COORDINATES PER ONEIDA COUNTY
- ▲ P.K. NAIL, FOUND

SECTION SUMMARY

21 SECTION

35N TOWNSHIP
KING TOWN

7E RANGE



RECEIVED AT LINCOLN COUNTY
COURTHOUSE THIS 19TH DAY
OF December 20 03
Jeffrey L. Demuth
LAND INFORMATION OFFICE

N 237595.12
E 412607.67



NOTES:
COORDINATES AND BEARINGS ARE REFERENCED TO THE LINCOLN COUNTY COORDINATE SYSTEM AS DEVELOPED BY THE WISCONSIN DEPARTMENT OF TRANSPORTATION AND WERE DETERMINED BY GPS OBSERVATIONS ON CONTROL POINTS AS SUPPLIED BY THE DOT.

CERTIFIED CORRECT:

Jeffrey L. Demuth 12/19/03
Signature Date

Index No. M-Q: 9-13