



LINCOLN COUNTY SECTION SUMMARY

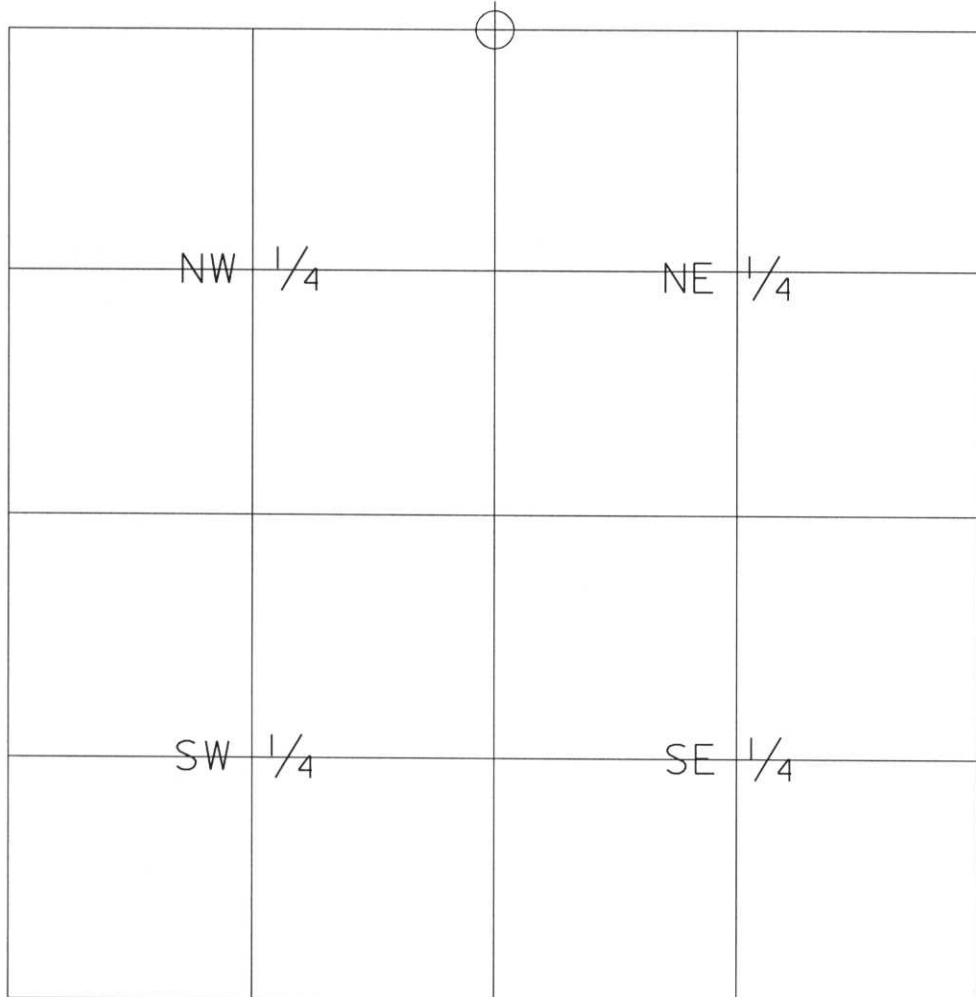
LEGEND

- FOUND GRANITE MONUMENT
-  FOUND LINCOLN COUNTY MONUMENT
-  SET LINCOLN COUNTY MONUMENT
- △ COORDINATES PER ONEIDA COUNTY
- ▲ P.K. NAIL, FOUND

SECTION SUMMARY 19 SECTION — 35N TOWNSHIP — 7E RANGE
KING TOWN



N 242897.04
 E 399364.15



N 237569.20
 E 402017.79

RECEIVED AT LINCOLN COUNTY
 COURTHOUSE THIS 19TH DAY
 OF December 20 03
Zary Dalk
 LAND INFORMATION OFFICE



NOTES:
 COORDINATES AND BEARINGS ARE REFERENCED TO THE LINCOLN COUNTY COORDINATE SYSTEM AS DEVELOPED BY THE WISCONSIN DEPARTMENT OF TRANSPORTATION AND WERE DETERMINED BY GPS OBSERVATIONS ON CONTROL POINTS AS SUPPLIED BY THE DOT.

CERTIFIED CORRECT:

Jeffrey L. Demuth
 Signature Date 12/19/03

Index No. M-Q-1-5