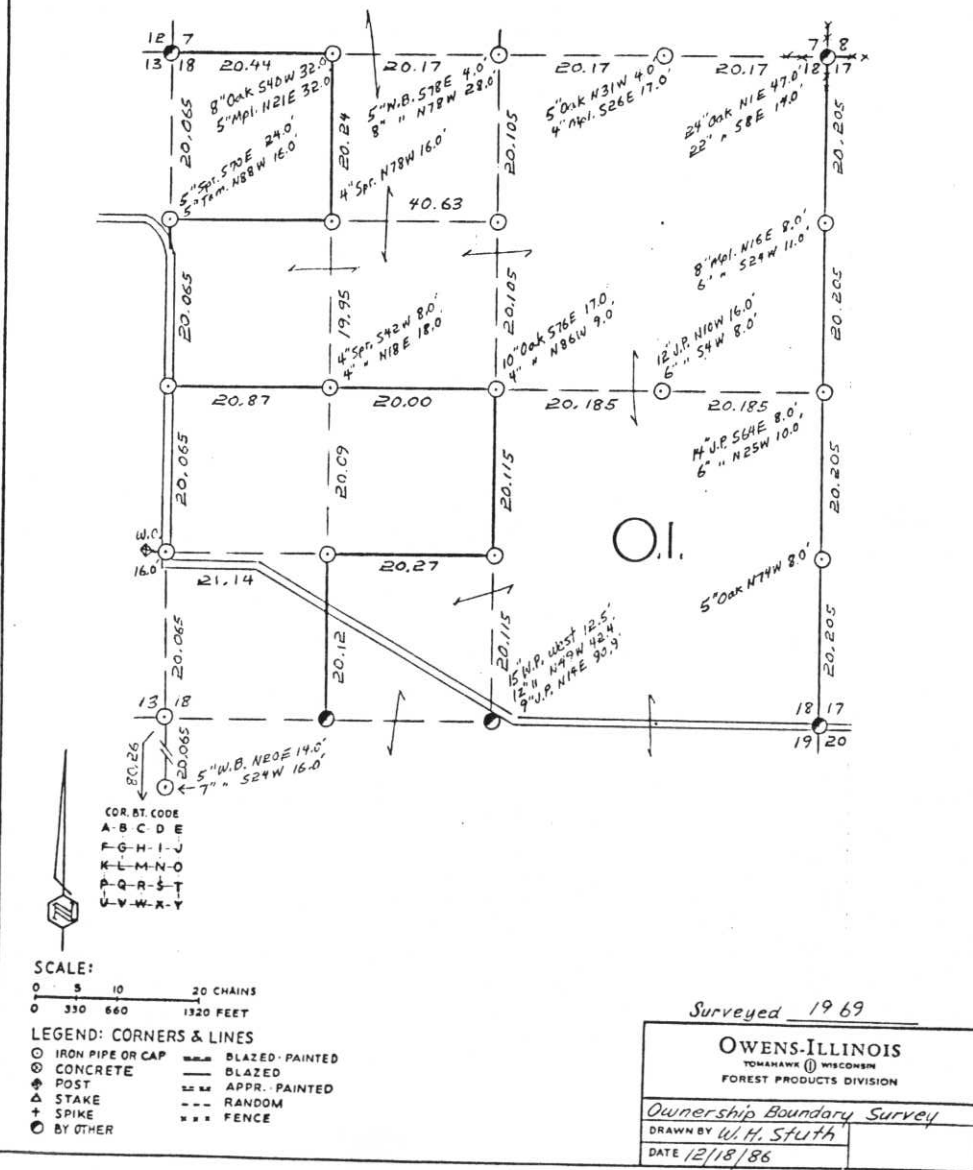


SEC. 18, T. 35 N., R. 7 E.,  
LINCOLN COUNTY, WIS.



Prepared By W.H. Stuth 3/6/87

B FILE

I-M: 15

STATEMENT Transit & Chain Surv. using corners  
found

RECORDS EXAMINED \_\_\_\_\_ DWG. NO. \_\_\_\_\_  
Org. Surv.  
County

Received from:  
Dickosa Papers Inc  
Forest District Office  
Menocqua, WI  
54348



LOCAL CONTACTS \_\_\_\_\_

REMARKS \_\_\_\_\_

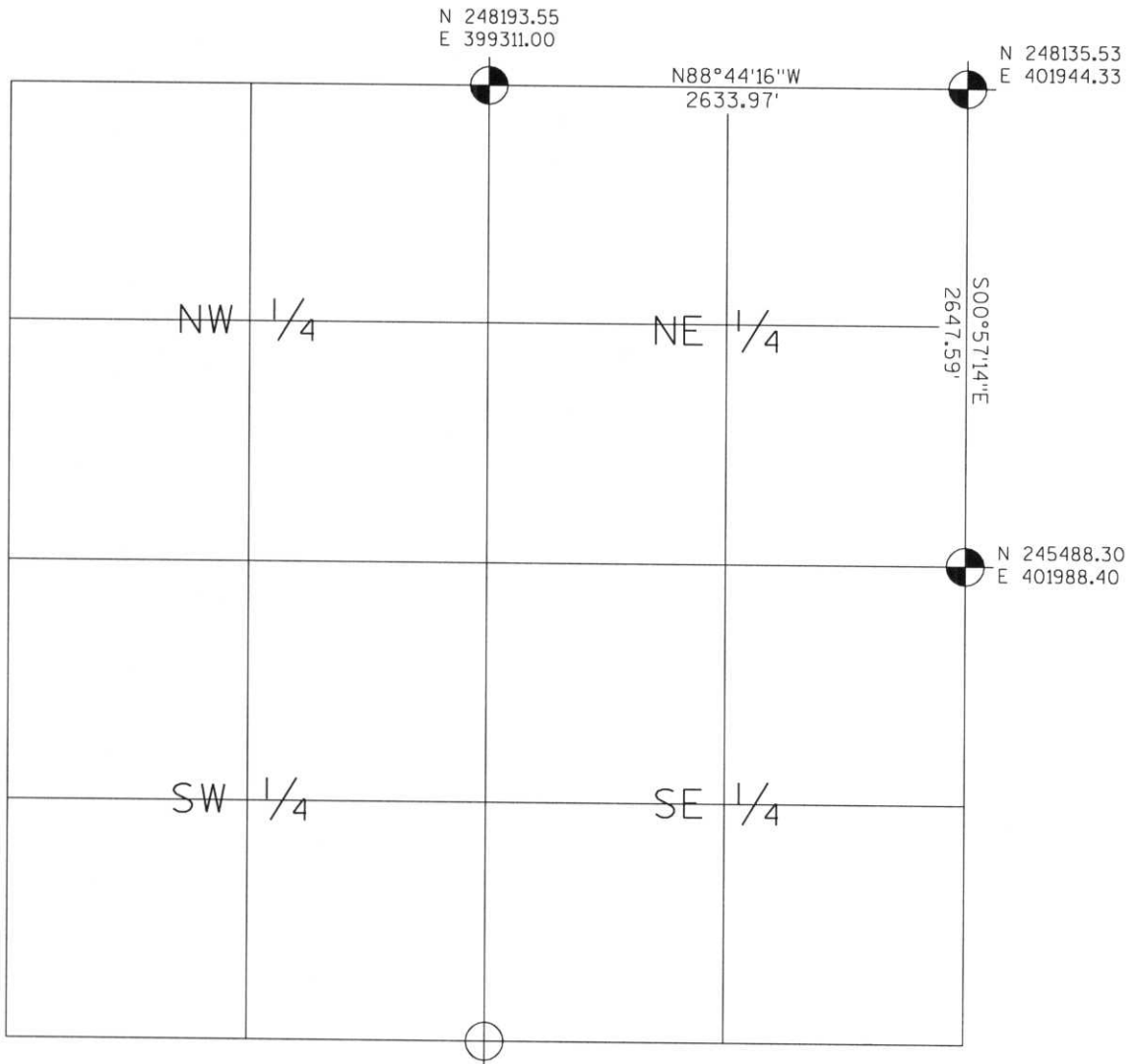
RECEIVED AT LINCOLN COUNTY  
COURTHOUSE THIS 18 DAY  
OF April 19 89.  
Pat Dube  
TAX DESCRIPTION OFFICE

# LINCOLN COUNTY SECTION SUMMARY

LEGEND

- FOUND GRANITE MONUMENT
-  FOUND LINCOLN COUNTY MONUMENT
-  SET LINCOLN COUNTY MONUMENT
- COORDINATES PER ONEIDA COUNTY

SECTION SUMMARY    18    —    35N    —    7E  
SECTION    TOWNSHIP    RANGE  
KING  
TOWN



RECEIVED AT LINCOLN COUNTY  
 COURTHOUSE THIS 19<sup>TH</sup> DAY  
 OF December 20 03  
*Tony Dallen*  
 LAND INFORMATION OFFICE



NOTES:  
 COORDINATES AND BEARINGS ARE REFERENCED TO THE LINCOLN COUNTY COORDINATE SYSTEM AS DEVELOPED BY THE WISCONSIN DEPARTMENT OF TRANSPORTATION AND WERE DETERMINED BY GPS OBSERVATIONS ON CONTROL POINTS AS SUPPLIED BY THE DOT.

CERTIFIED CORRECT:

*Jeffrey L. Demuth*      12/19/03  
 Signature      Date

Index No. I-M:1-S