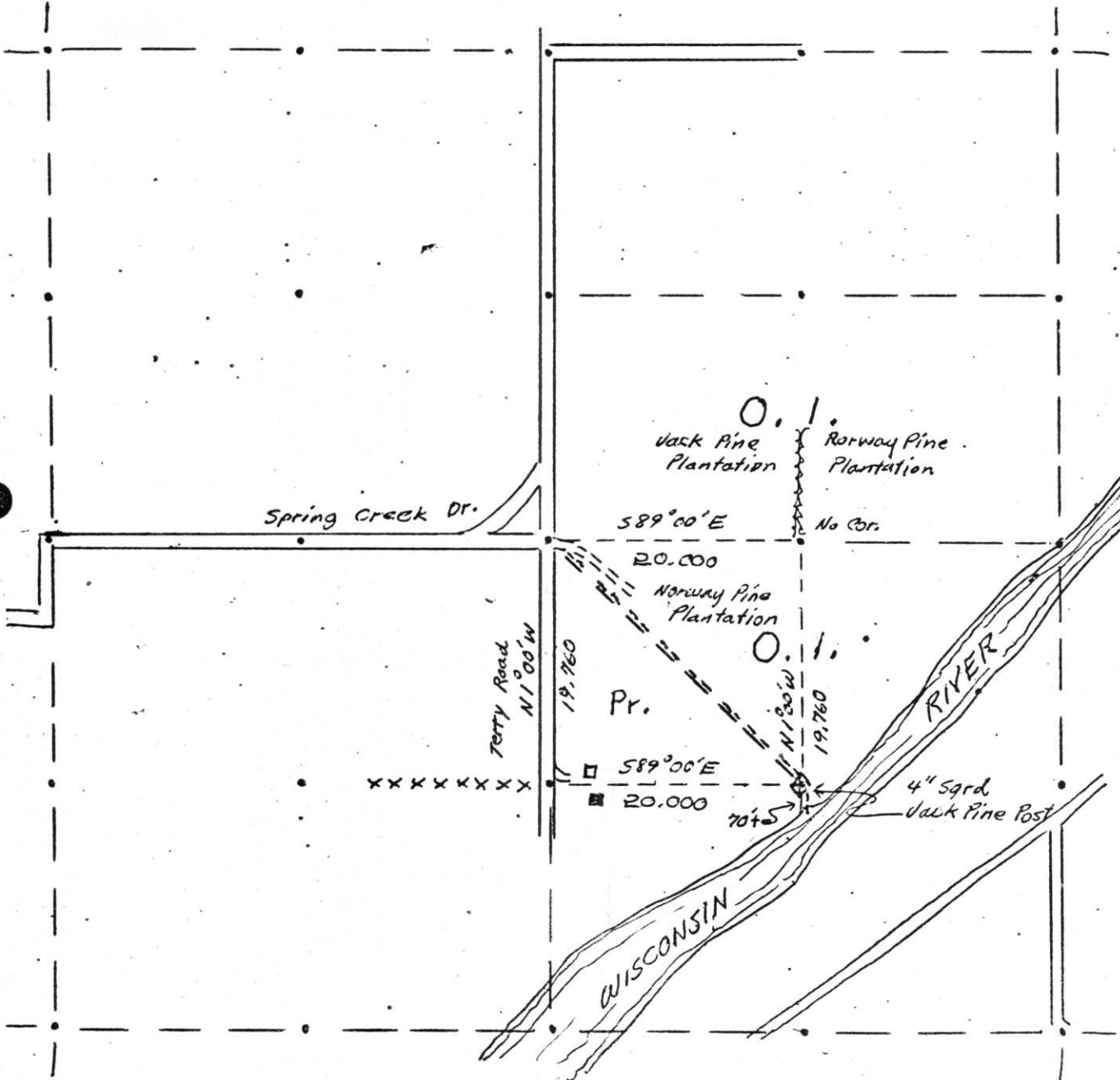


8/12/74

T. 35 N R. 7 E SEC. 16
LINCOLN COUNTY, WIS.



LEGEND CORNERS & LINES

- ⊙ Iron Pipe or Cap
- ⊗ Concrete
- ◆ Wood Post
- △ Stake
- X Hub
- + Spike

- ===== True-Blazed-Painted
- True Cut-Blazed
- Approximate-Painted
- Random
- XXXXXX Fence
- .-.- R.O.W.

MAP BY
W. H. Stuth
Survey By O.I.
Stuth & Christianson

Scale 1 1/2" = 1320.0'

I-M: 9-13

LINCOLN COUNTY SECTION SUMMARY

LEGEND

- ☐ FOUND GRANITE MONUMENT
- ⊕ FOUND LINCOLN COUNTY MONUMENT
- ⊙ SET LINCOLN COUNTY MONUMENT
- △ COORDINATES PER ONEIDA COUNTY
- ▲ P.K. NAIL, FOUND

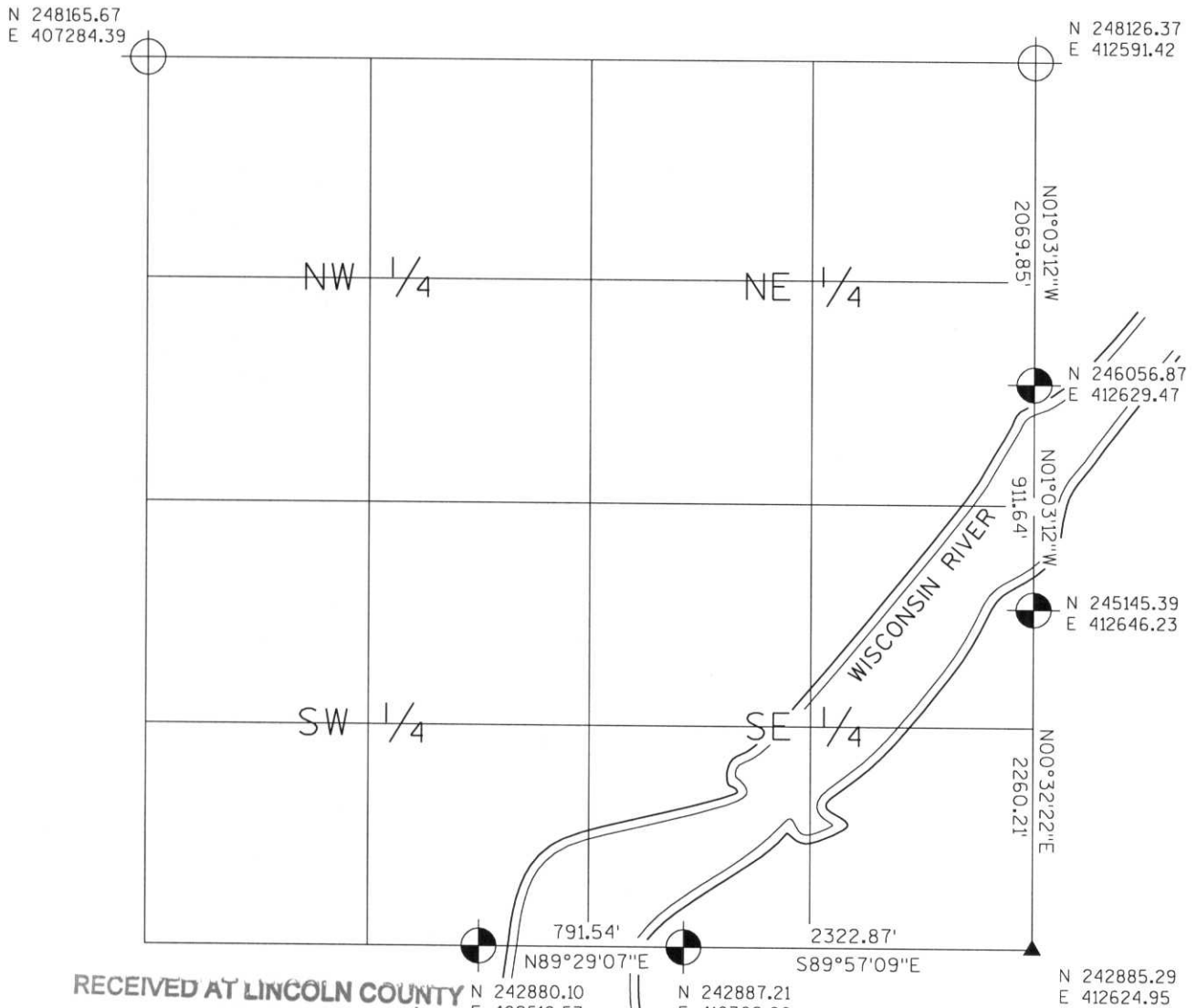
SECTION SUMMARY

16 SECTION

35N TOWNSHIP

7E RANGE

KING TOWN



RECEIVED AT LINCOLN COUNTY COURTHOUSE THIS 19TH DAY OF December 20 03
Zany Walker
 LAND INFORMATION OFFICE



NOTES:
 COORDINATES AND BEARINGS ARE REFERENCED TO THE LINCOLN COUNTY COORDINATE SYSTEM AS DEVELOPED BY THE WISCONSIN DEPARTMENT OF TRANSPORTATION AND WERE DETERMINED BY GPS OBSERVATIONS ON CONTROL POINTS AS SUPPLIED BY THE DOT.

CERTIFIED CORRECT:

Jeffrey L. Demuth 12/19/03
 Signature Date

Index No. I-M: 9-13

OWENS-ILLINOIS

DATE 8/12/74

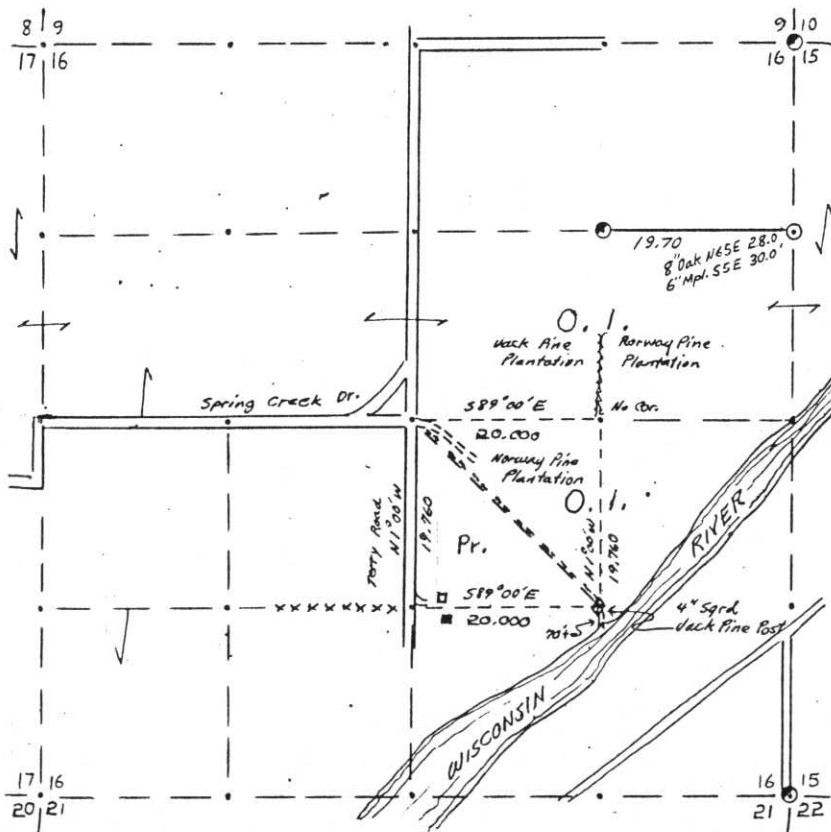
B FILE

I-M: 9-13

T. 35 N R. 7 E SEC. 16

LINCOLN COUNTY, WIS.

STATEMENT Transit & Chain South line NE-NE -
Compass line in NW-SE



LEGEND CORNERS & LINES

- Iron Pipe or Cap
- ⊙ Concrete
- ⊕ Wood Post
- △ Stake
- X Hub
- + Spike
- By Others

- True-Blazed-Pointed
- True Cut-Blazed
- Approximate-Pointed
- Random
- xxxxx Fence
- - - - R.O.W.

MAP BY

W. H. Stuth
Survey By O.I.
Stuth & Christanson
NW-SE

Scale 1 1/2" = 1320.0'

Prepared By W.H. Stuth 3/6/87

RECORDS EXAMINED _____ DWG. NO. _____

Org. Surv.
County

Received from:
Nekeood Papers Inc.
Forest District Office
Minocqua, WI
54348

LOCAL CONTACTS _____

REMARKS _____

RECEIVED AT LINCOLN COUNTY
COURTHOUSE THIS 18 DAY
OF April 19 89
Pat Priebe
TAX DESCRIPTION OFFICE