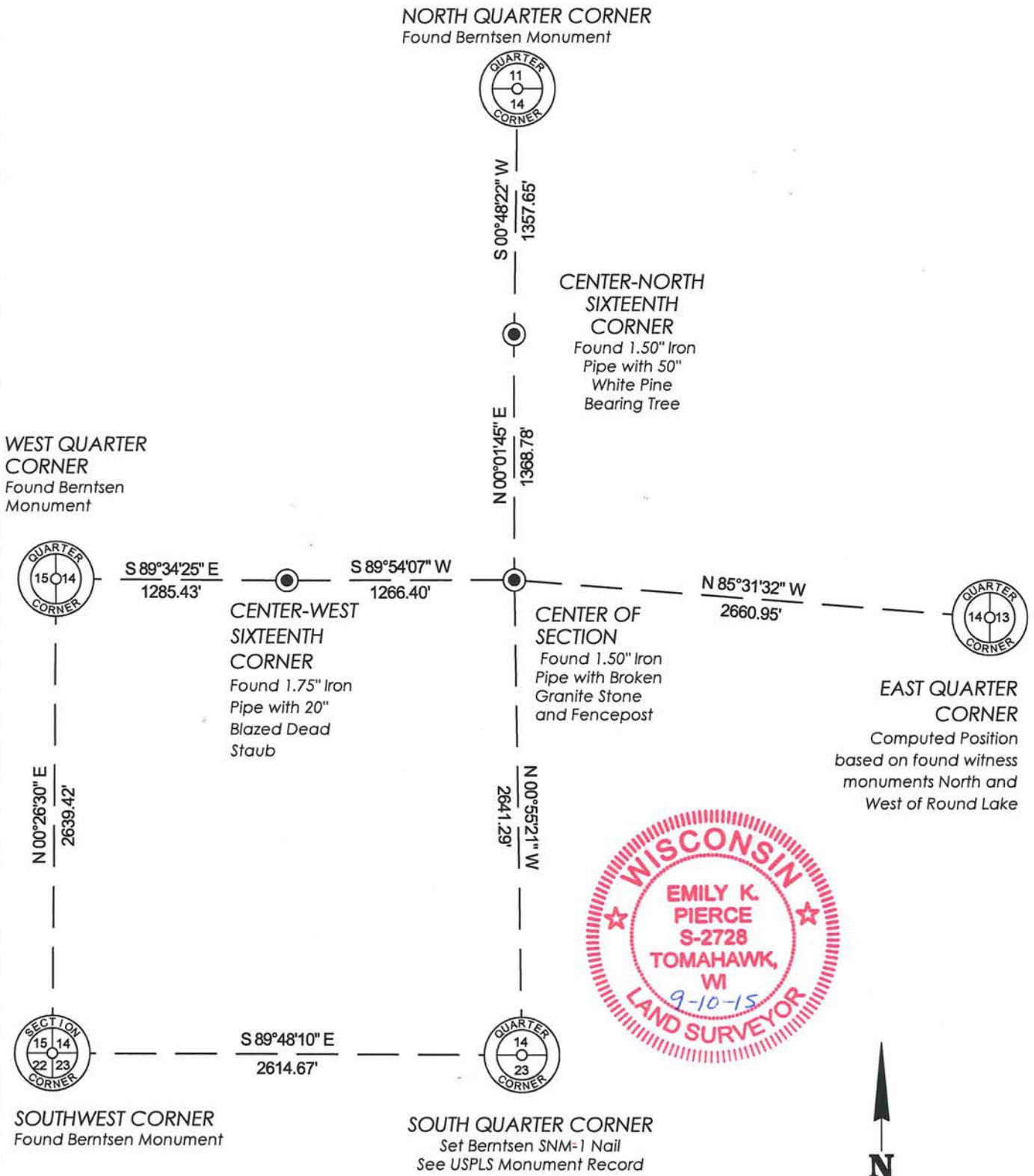


# Section 14, Township 35 North, Range 7 East

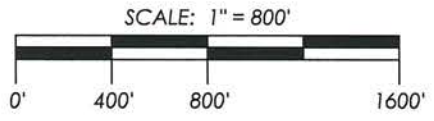
## Town of King, Lincoln County, Wisconsin



RECEIVED BY LINCOLN COUNTY  
SURVEYOR THIS 16<sup>TH</sup> DAY  
OF September 20 15  
Tom Dall  
COUNTY SURVEYOR



Bearings Lincoln County Grid  
Based on GPS data in NAD 83(2011)



I, Emily K. Pierce, Professional Land Surveyor No. S-2728, hereby certify that the corner locations on this record was determined by me or under my direction and control and is correct and complete to the best of my knowledge and belief.

*Emily K Pierce*



Emily K. Pierce, PLS No. S-2728  
STEIGERWALDT LAND SURVEYING, LLC

<b>STEIGERWALDT LAND SURVEYING, LLC</b>	
856 NORTH 4TH STREET, TOMAHAWK, WI 54487 PHONE #: (715) 453-3274 FAX #: (715) 453-8325 www.steigerwaldt.com	
JOB #: 5012	DWG #: 5012 SQC Tiesheet

Sec. 14

# LINCOLN COUNTY SECTION SUMMARY

LEGEND

- FOUND GRANITE MONUMENT
-  FOUND LINCOLN COUNTY MONUMENT
-  SET LINCOLN COUNTY MONUMENT
- COORDINATES PER ONEIDA COUNTY
- 1" I.P., FOUND

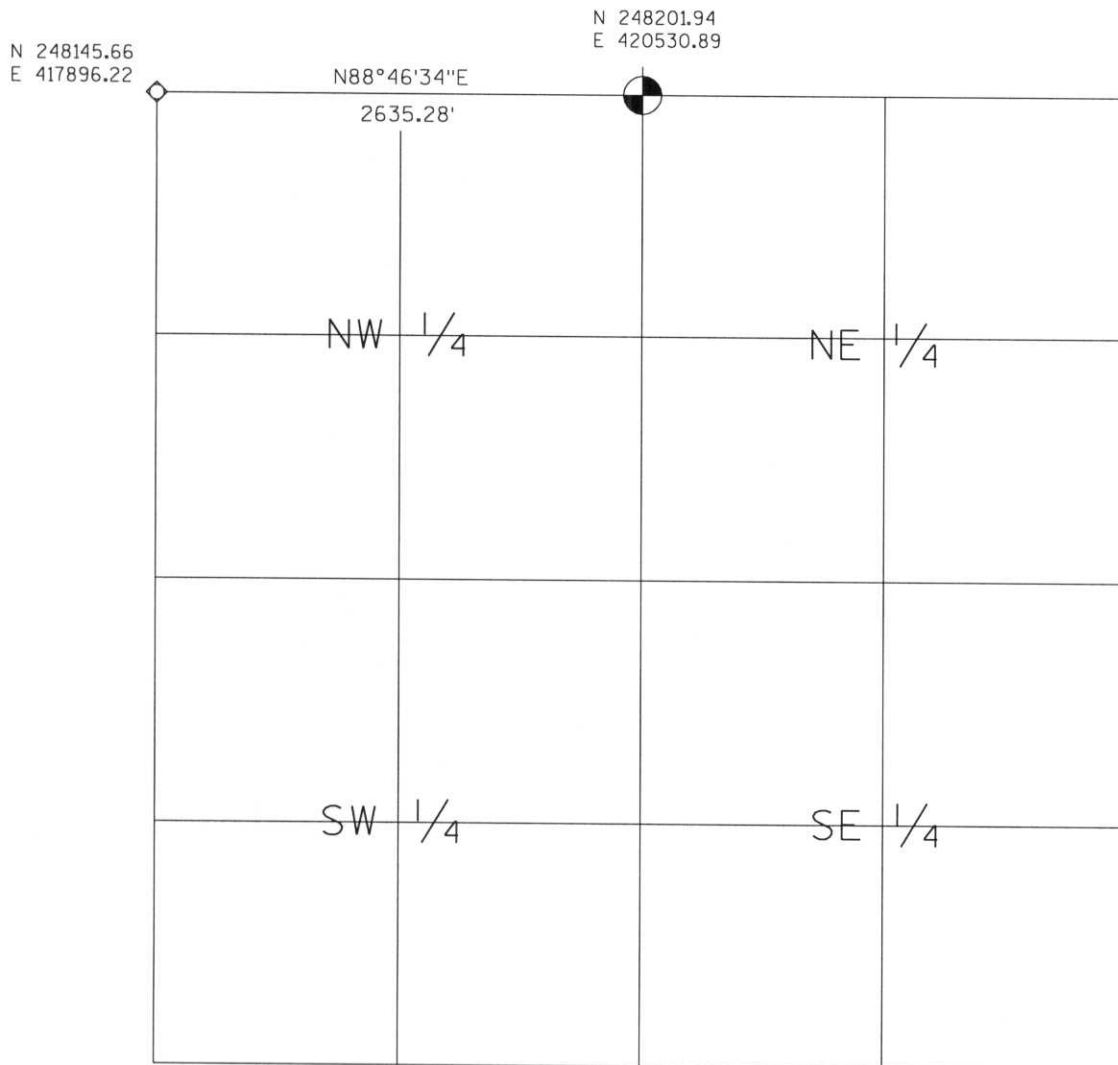
SECTION SUMMARY

14  
SECTION

35N  
TOWNSHIP

7E  
RANGE

KING  
TOWN



RECEIVED AT LINCOLN COUNTY  
COURTHOUSE THIS 19<sup>TH</sup> DAY  
OF December 20 03  
Jeffrey L. Demuth  
LAND INFORMATION OFFICE



NOTES:  
COORDINATES AND BEARINGS ARE REFERENCED TO THE LINCOLN COUNTY COORDINATE SYSTEM AS DEVELOPED BY THE WISCONSIN DEPARTMENT OF TRANSPORTATION AND WERE DETERMINED BY GPS OBSERVATIONS ON CONTROL POINTS AS SUPPLIED BY THE DOT.

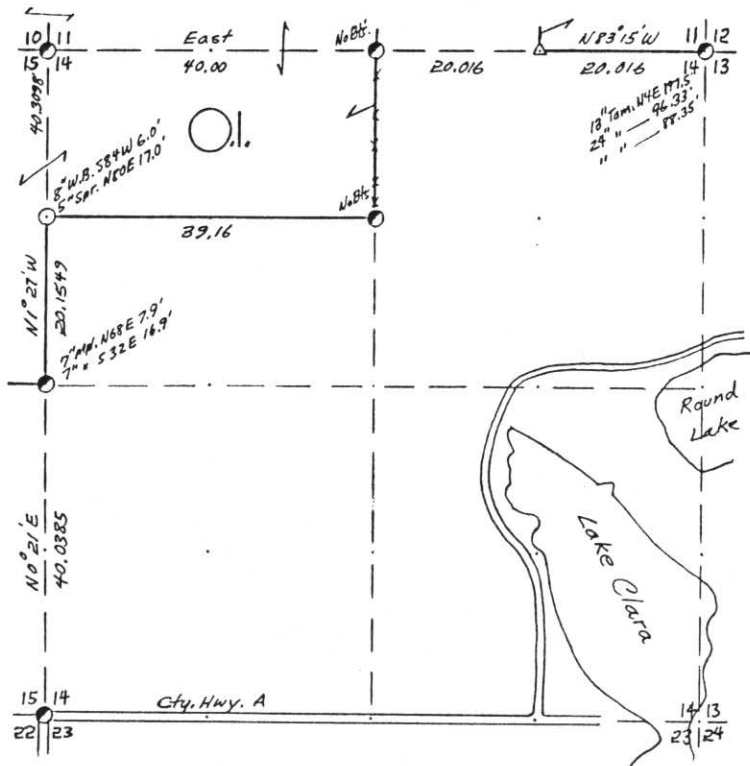
CERTIFIED CORRECT:

Jeffrey L. Demuth                      12/19/03  
Signature    Date

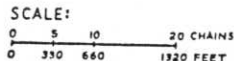
Index No. I-M: 17-21

SEC. 14, T. 35 N., R. 7 E.,

LINCOLN COUNTY, WIS.



- COR. BT. CODE  
 A - B C D E  
 F - G H I J  
 K - L M N O  
 P - Q R S T  
 U - V W X Y



- LEGEND: CORNERS & LINES  
 ○ IRON PIPE OR CAP    — BLAZED - PAINTED  
 ⊙ CONCRETE            — BLAZED  
 ⊕ POST                 — APPR. PAINTED  
 △ STAKE                - - - RANDOM  
 + SPIKE                 - - - FENCE  
 ⊙ BY OTHERS

Surveyed 1980  
 OWENS-ILLINOIS  
 YONAHAWK WISCONSIN  
 FOREST PRODUCTS DIVISION  
 Ownership Boundary Survey  
 DRAWN BY W.H. Stuth  
 DATE 2/26/87

Prepared By W.H. Stuth 3/6/87

B FILE

I-M : 17-21

STATEMENT Transit & Chain Surv. using corners  
found.

RECORDS EXAMINED \_\_\_\_\_ DWG. NO. \_\_\_\_\_

Org. Surv.

County

Genisot Eng. Sec. 12

Northwoods Surveyors Sec. 15

Received from:

Mekoosa Papers Inc  
Forest District Office  
Menoscogee, WI  
54548

LOCAL CONTACTS \_\_\_\_\_

REMARKS \_\_\_\_\_

RECEIVED AT LINCOLN COUNTY  
COURTHOUSE THIS 18 DAY  
OF April 1989.  
Pat Pruebe  
TAX DESCRIPTION OFFICE