

LINCOLN COUNTY SECTION SUMMARY

LEGEND

- ☐ FOUND GRANITE MONUMENT
- ⊕ FOUND LINCOLN COUNTY MONUMENT
- ◐ SET LINCOLN COUNTY MONUMENT
- △ COORDINATES PER ONEIDA COUNTY
- ◇ 3" I.P., FOUND

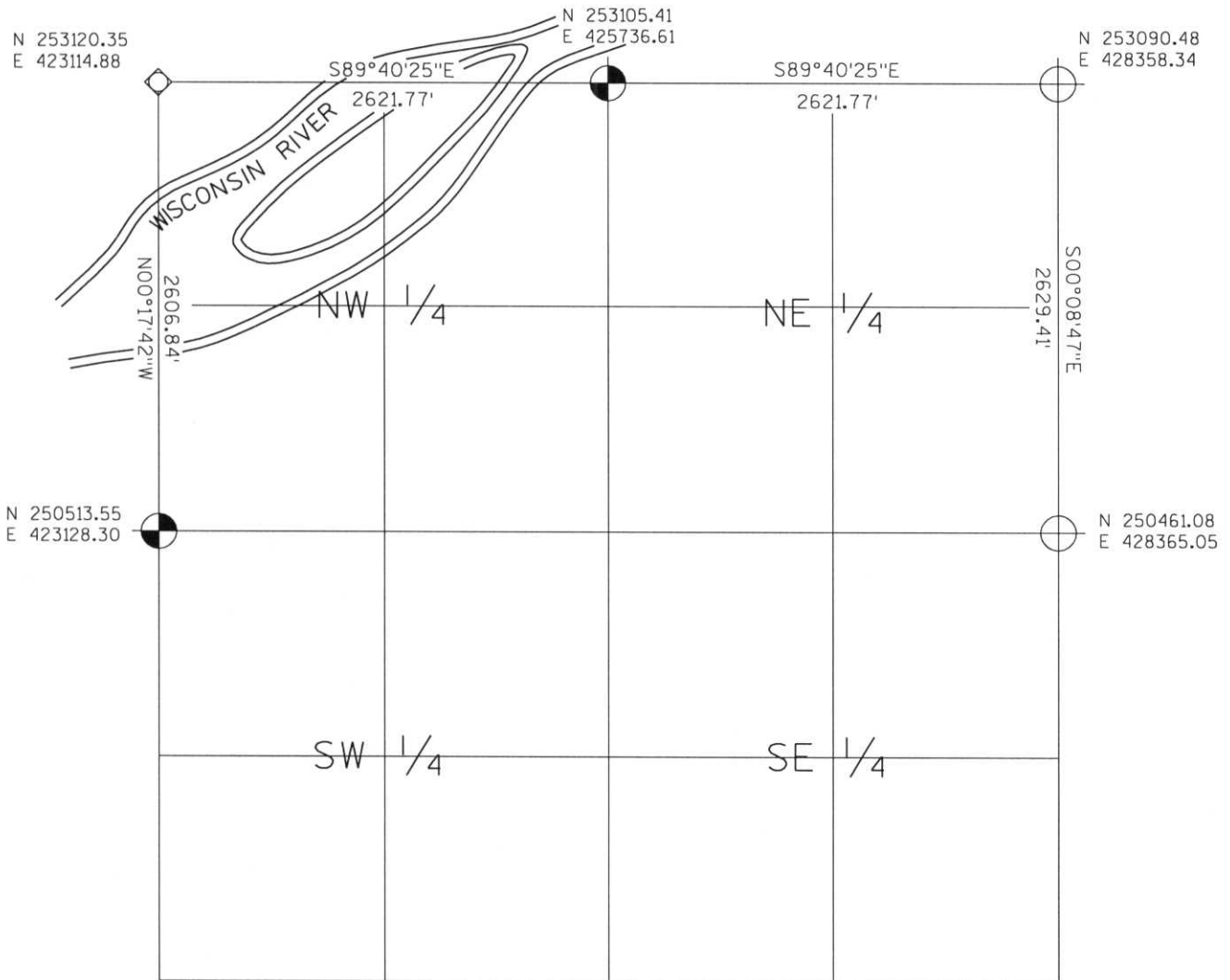
SECTION SUMMARY

12 SECTION

35N TOWNSHIP

7E RANGE

KING TOWN



RECEIVED AT LINCOLN COUNTY
 COURTHOUSE THIS 19TH DAY
 OF December 20 03
Tony Dalko
 LAND INFORMATION OFFICE



NOTES:
 COORDINATES AND BEARINGS ARE REFERENCED TO THE LINCOLN COUNTY COORDINATE SYSTEM AS DEVELOPED BY THE WISCONSIN DEPARTMENT OF TRANSPORTATION AND WERE DETERMINED BY GPS OBSERVATIONS ON CONTROL POINTS AS SUPPLIED BY THE DOT.

CERTIFIED CORRECT:

Jeffrey L. Demuth 12/19/03
 Signature Date

Index No. E-I: 21-25