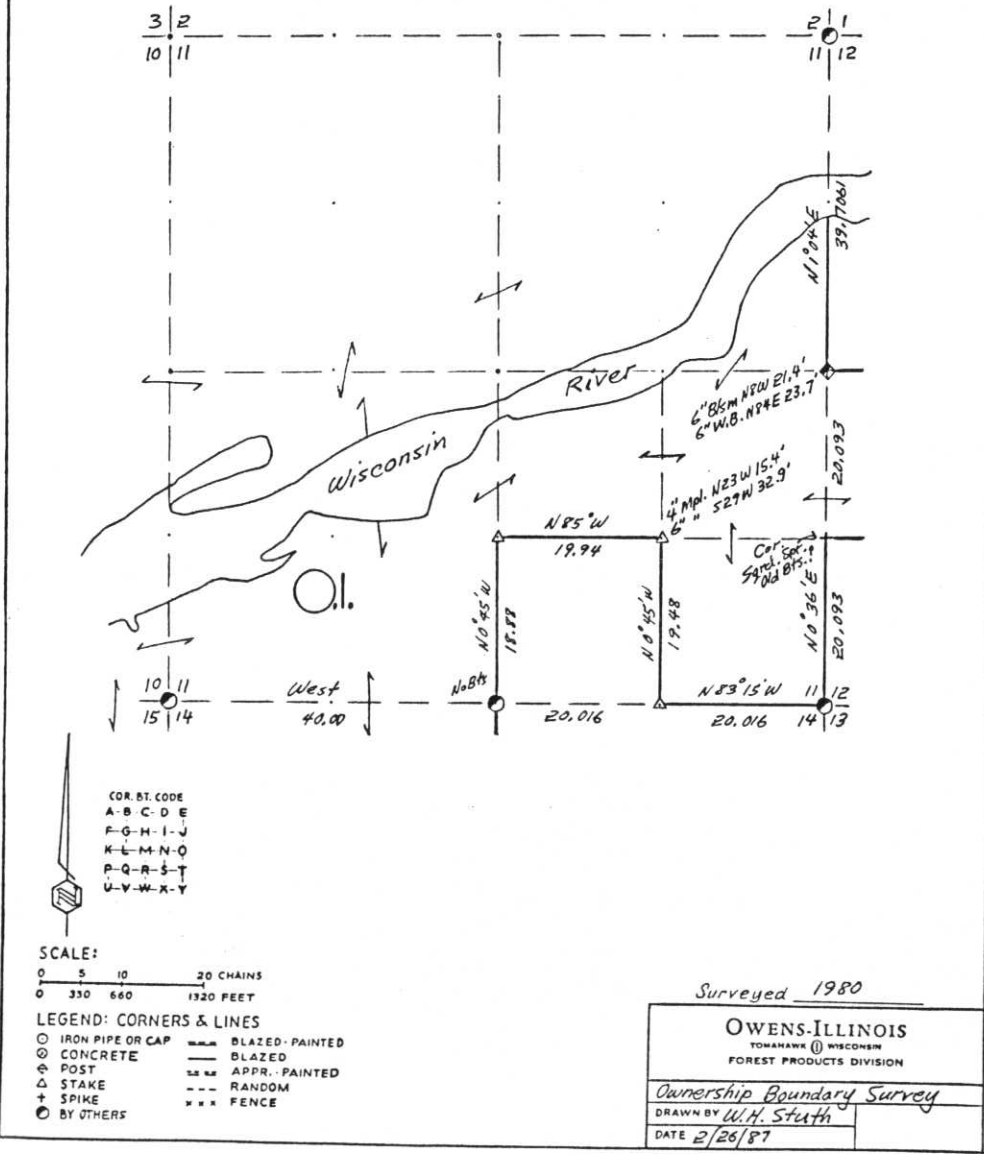


SEC. 11, T.35 N., R. 7 E.,
LINCOLN COUNTY, WIS.



Prepared By W.H. Stuth 3/6/87

B FILE

E-1:17-21

STATEMENT Combination Transit-Compass & Chain
Surv. using corners found

RECORDS EXAMINED _____ DWG. NO. _____

Org. Surv.
County
Genisot Eng.

Received from:
Nekoosa Paper Co.
Forest District Office
Menomonie WI
54548





LOCAL CONTACTS _____

REMARKS _____

RECEIVED AT LINCOLN COUNTY
COURTHOUSE THIS 18 DAY
OF April 19 89
Patt Priebe
TAX DESCRIPTION OFFICE

LINCOLN COUNTY SECTION SUMMARY

LEGEND

- FOUND GRANITE MONUMENT
-  FOUND LINCOLN COUNTY MONUMENT
-  SET LINCOLN COUNTY MONUMENT
-  COORDINATES PER ONEIDA COUNTY
-  3" I.P., FOUND

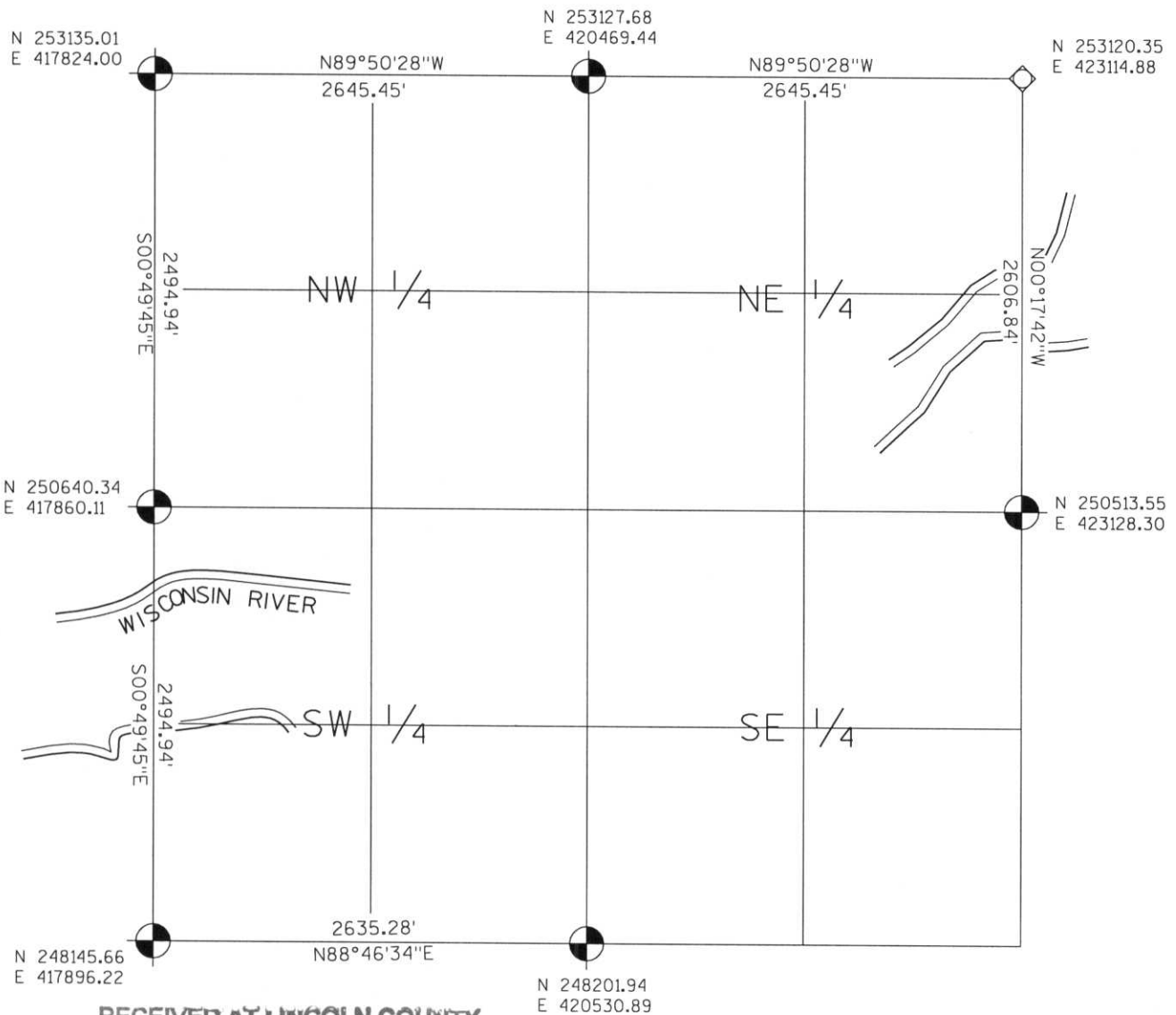
SECTION SUMMARY

11 SECTION

35N TOWNSHIP

7E RANGE

KING TOWN



RECEIVED AT LINCOLN COUNTY
 COURTHOUSE THIS 29TH DAY
 OF December 20 03
Tom Dull
 LAND INFORMATION OFFICE



NOTES:
 COORDINATES AND BEARINGS ARE REFERENCED TO THE LINCOLN COUNTY COORDINATE SYSTEM AS DEVELOPED BY THE WISCONSIN DEPARTMENT OF TRANSPORTATION AND WERE DETERMINED BY GPS OBSERVATIONS ON CONTROL POINTS AS SUPPLIED BY THE DOT.

CERTIFIED CORRECT:

Jeffrey L. Demuth
 Signature 12/19/03
 Date

Index No. E-1:17-21