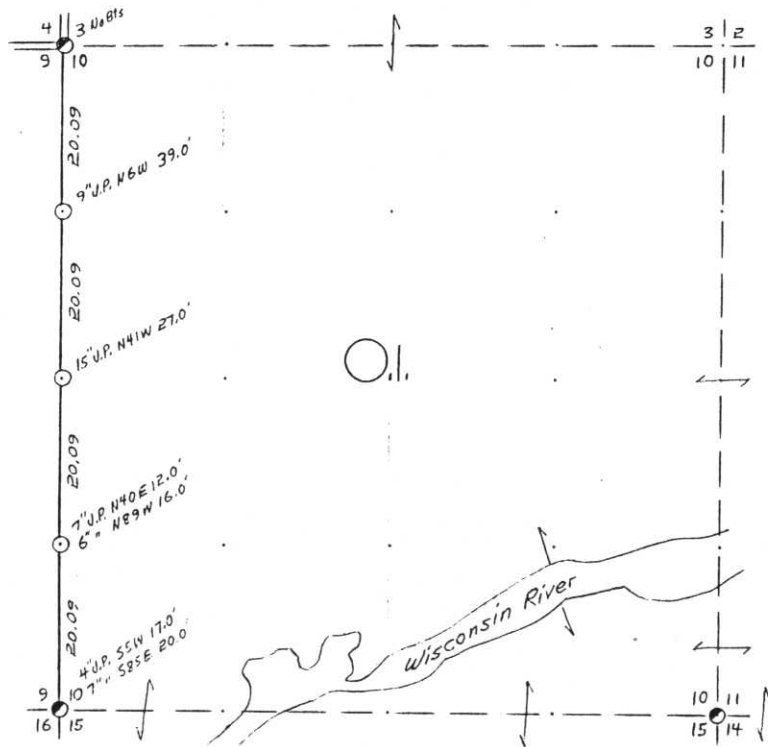


SEC. 10, T.35 N., R. 7 E.,
LINCOLN COUNTY, WIS.



COR. BT. CODE
A-B-C-D-E
F-G-H-I-J
K-L-M-N-O
P-Q-R-S-T
U-V-W-X-Y

SCALE:
0 5 10 20 CHAINS
0 330 660 1320 FEET

LEGEND: CORNERS & LINES
 ○ IRON PIPE OR CAP --- BLAZED - PAINTED
 ⊙ CONCRETE --- BLAZED
 ⊕ POST --- APPR. - PAINTED
 △ STAKE --- RANDOM
 + SPIKE --- FENCE
 ● BY OTHERS

Surveyed 1960

OWENS-ILLINOIS
TOMAHAWK WISCONSIN
FOREST PRODUCTS DIVISION

Ownership Boundary Survey

DRAWN BY W. H. Stuth

DATE 12/19/86

Prepared By W. H. Stuth 3/6/87

B FILE

E-I: 13-17

STATEMENT Staff Compass & Chain Surv. using
corners found

RECORDS EXAMINED _____ DWG. NO. _____

Org. Surv.

County

Received from:
Nekoosa Papers Inc
Forest District Office
Monocquia WI
54548

LOCAL CONTACTS _____

REMARKS _____

RECEIVED AT LINCOLN COUNTY
COURTHOUSE THIS 18 DAY
OF April 19 89.

Pat. Diebe

TAX DESCRIPTION OFFICE

LINCOLN COUNTY SECTION SUMMARY

LEGEND

- ☐ FOUND GRANITE MONUMENT
- ⊕ FOUND LINCOLN COUNTY MONUMENT
- ⊙ SET LINCOLN COUNTY MONUMENT
- △ COORDINATES PER ONEIDA COUNTY

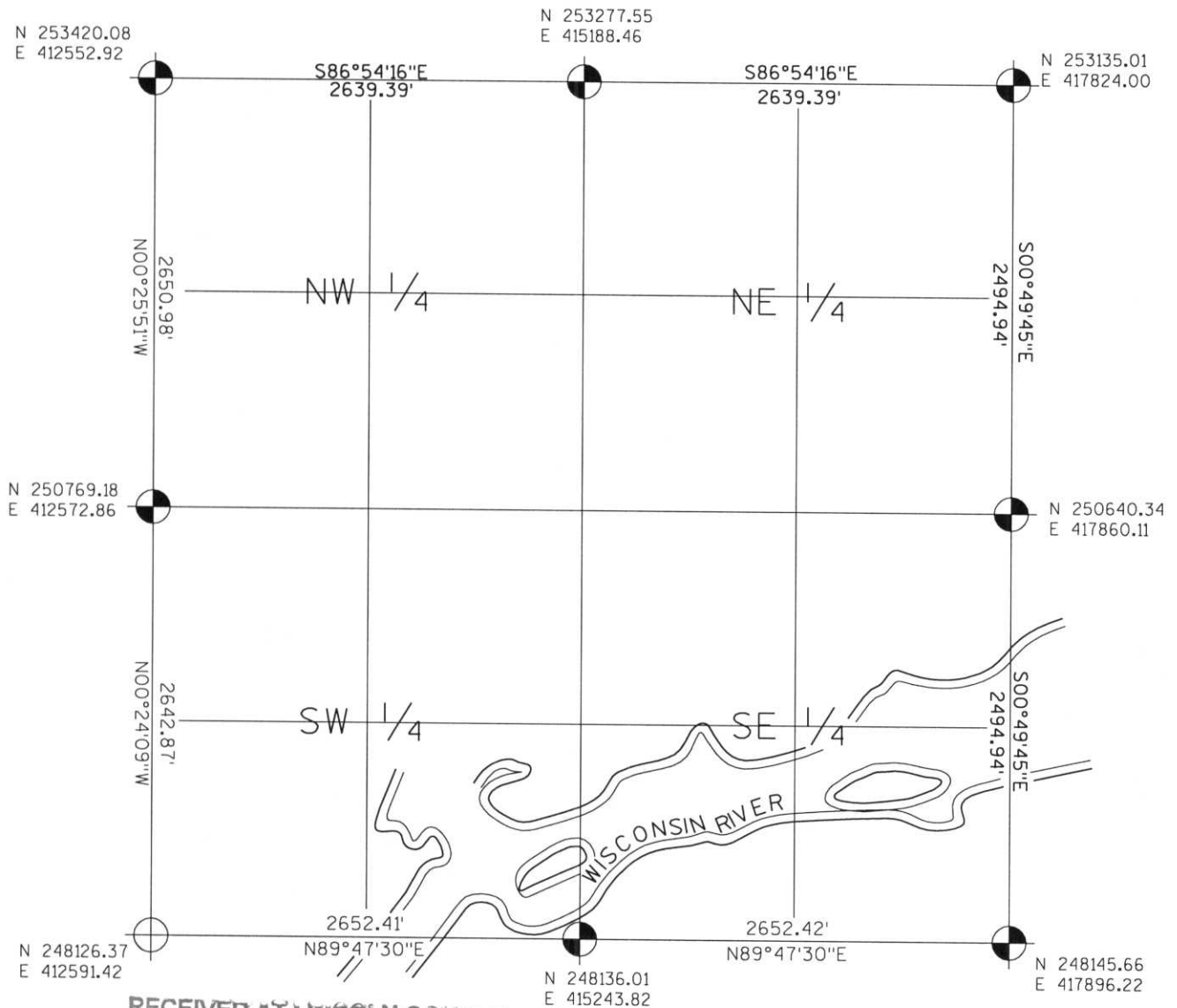
SECTION SUMMARY

10
SECTION

35N
TOWNSHIP

7E
RANGE

KING
TOWN



RECEIVED AT LINCOLN COUNTY
COURTHOUSE THIS 19TH DAY
OF December 20, 03
Tony Dall
LAND INFORMATION OFFICE



NOTES:
COORDINATES AND BEARINGS ARE REFERENCED TO THE LINCOLN COUNTY COORDINATE SYSTEM AS DEVELOPED BY THE WISCONSIN DEPARTMENT OF TRANSPORTATION AND WERE DETERMINED BY GPS OBSERVATIONS ON CONTROL POINTS AS SUPPLIED BY THE DOT.

CERTIFIED CORRECT:

Signature: *Jeffrey L. Demuth* Date: 12/19/03

Index No. E-I : 13-17