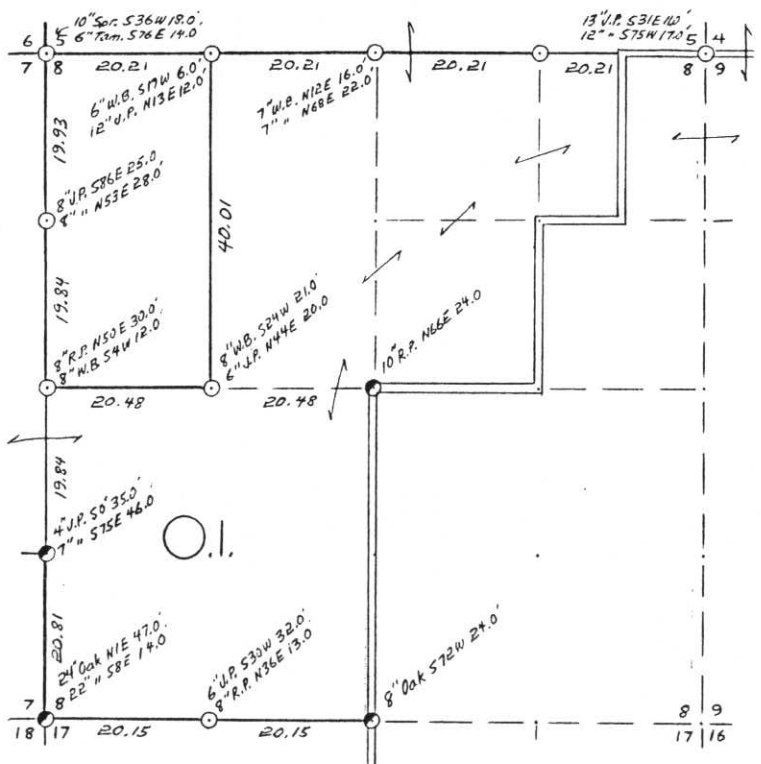


SEC. 8, T.35 N., R.7 E.,
LINCOLN COUNTY, WIS.



- COR. BT. CODE
A-B-C-D-E
F-G-H-I-J
K-L-M-N-O
P-Q-R-S-T
U-V-W-X-Y



- LEGEND: CORNERS & LINES
○ IRON PIPE OR CAP
⊙ CONCRETE
⊕ POST
△ STAKE
+ SPIKE
○ BY OTHER
--- BLAZED - PAINTED
--- BLAZED
--- APPR. PAINTED
--- RANDOM
--- FENCE

Surveyed 1968
OWENS-ILLINOIS
TOMAHAWK (I) WISCONSIN
FOREST PRODUCTS DIVISION
Ownership Boundary Survey
DRAWN BY W.H. STUTH
DATE 12/18/86

Prepared By W.H. Stuth 3/6/87

B FILE

E-I: 5-9

STATEMENT Transit & Chain Surv. using corners
found

RECORDS EXAMINED _____ DWG. NO. _____
Org. Surv.
County

Received from:
Dekoosa Papers Inc.
Forest District Office
Minocqua, WI
54548

LOCAL CONTACTS _____

REMARKS _____

RECEIVED AT LINCOLN COUNTY
COURTHOUSE THIS 18 DAY
OF April 19 89
Patt Prebe
TAX DESCRIPTION OFFICE

LINCOLN COUNTY SECTION SUMMARY

LEGEND

- ☐ FOUND GRANITE MONUMENT
- ⊕ FOUND LINCOLN COUNTY MONUMENT
- ◐ SET LINCOLN COUNTY MONUMENT
- △ COORDINATES PER ONEIDA COUNTY

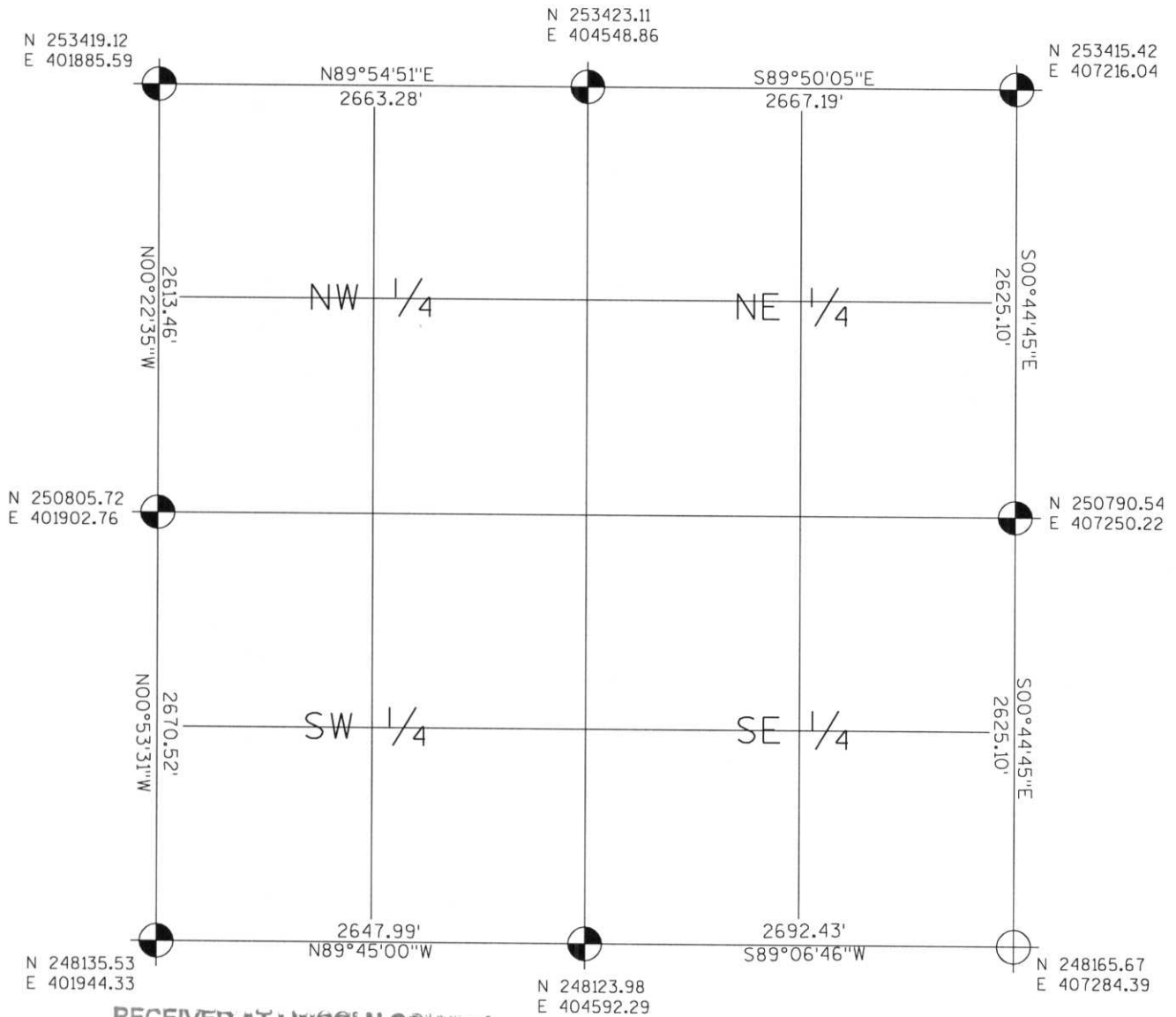
SECTION SUMMARY

08
SECTION

35N
TOWNSHIP

7E
RANGE

KING
TOWN



RECEIVED AT LINCOLN COUNTY
COURTHOUSE THIS 19TH DAY
OF December 20 03
Jerry Dalt
LAND INFORMATION OFFICE



NOTES:
COORDINATES AND BEARINGS ARE REFERENCED TO THE LINCOLN COUNTY COORDINATE SYSTEM AS DEVELOPED BY THE WISCONSIN DEPARTMENT OF TRANSPORTATION AND WERE DETERMINED BY GPS OBSERVATIONS ON CONTROL POINTS AS SUPPLIED BY THE DOT.

CERTIFIED CORRECT:

Jeffrey L. Demuth 12/19/03
Signature Date

Index No. E-I:5-9