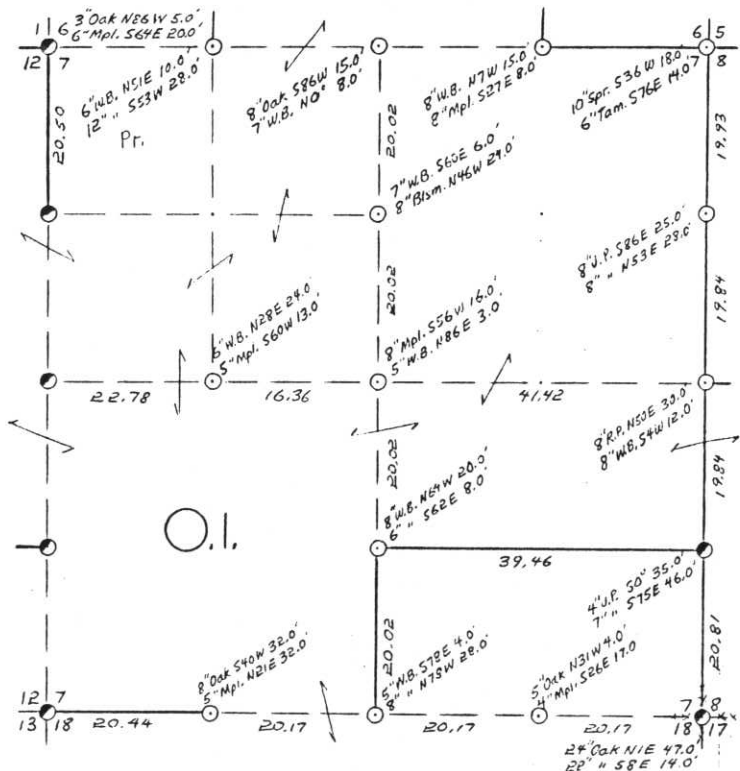
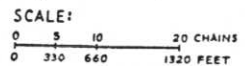


SEC. 7, T.35 N., R. 7 E.,  
LINCOLN COUNTY, WIS.



- COR. ST. CODE  
 A-B-C-D-E  
 F-G-H-I-J  
 K-L-M-N-O  
 P-Q-R-S-T  
 U-V-W-X-Y



- LEGEND: CORNERS & LINES  
 ○ IRON PIPE OR CAP      ——— BLAZED - PAINTED  
 ⊙ CONCRETE              ——— BLAZED  
 ⊕ POST                    ——— APPR. PAINTED  
 △ STAKE                 - - - - - RANDOM  
 + SPIKE  
 ● BY OTHER              \* \* \* FENCE

Surveyed 1960 & 1968  
**OWENS-ILLINOIS**  
 TOMAHAWK WISCONSIN  
 FOREST PRODUCTS DIVISION  
 Ownership Boundary Survey  
 DRAWN BY W.H. Stuth  
 DATE 12/18/86

Prepared By W.H. Stuth 3/6/87

B FILE

E-I: 1-5

STATEMENT Transit & Chain Surv. using corners  
found

RECORDS EXAMINED \_\_\_\_\_ DWG. NO. \_\_\_\_\_

Org. Surv.  
County

Received from:  
DeKroon Papers Inc.  
Forest District Office  
Menocque, WI  
54548



LOCAL CONTACTS \_\_\_\_\_

REMARKS \_\_\_\_\_

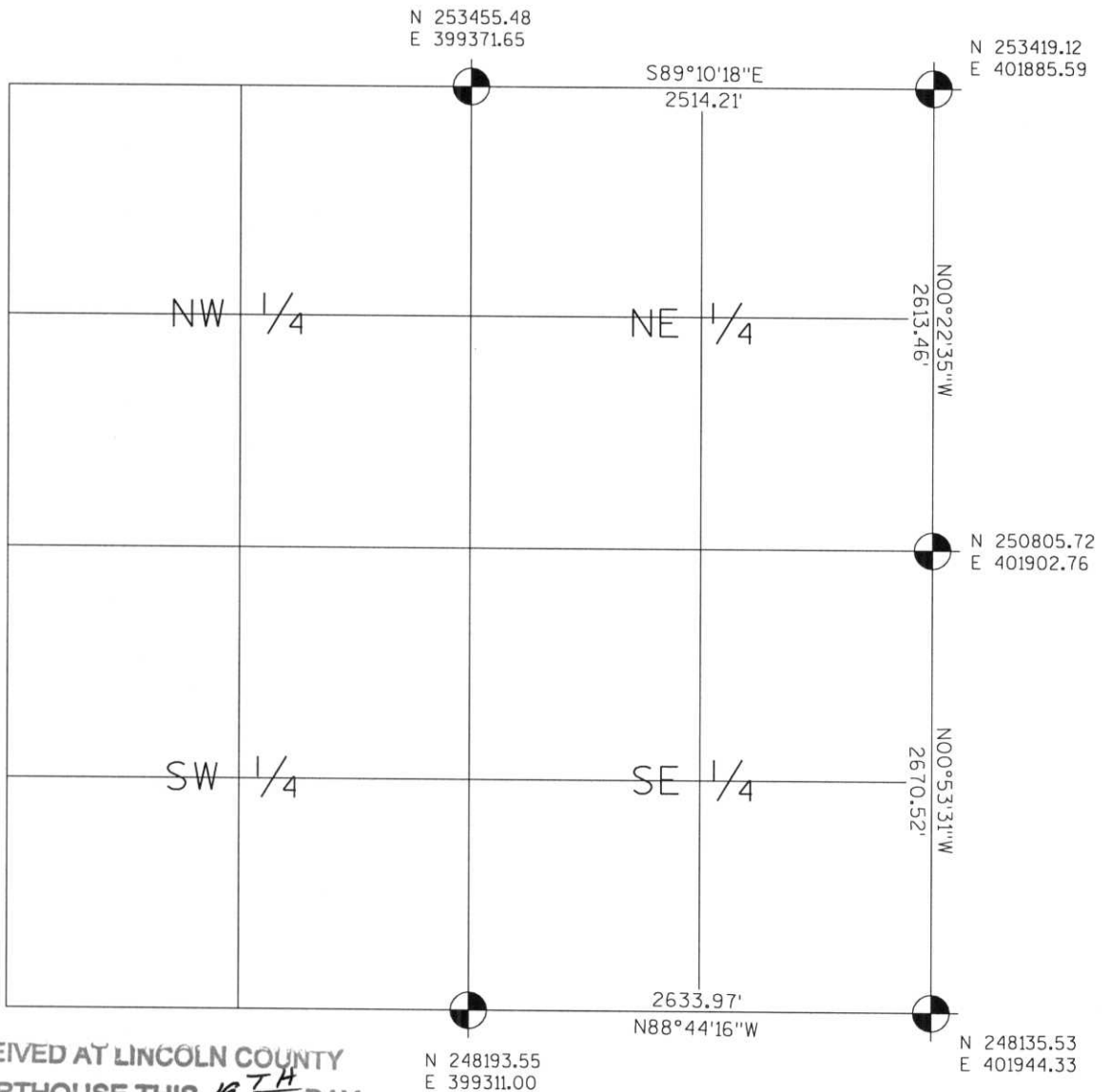
RECEIVED AT LINCOLN COUNTY  
 COURTHOUSE THIS 18 DAY  
 OF April 19 89.  
Pat Preebe  
 TAX DESCRIPTION OFFICE

# LINCOLN COUNTY SECTION SUMMARY

**LEGEND**

- FOUND GRANITE MONUMENT
-  FOUND LINCOLN COUNTY MONUMENT
-  SET LINCOLN COUNTY MONUMENT
- △ COORDINATES PER ONEIDA COUNTY

SECTION SUMMARY 07 SECTION — 35N TOWNSHIP — 7E RANGE  
KING TOWN



RECEIVED AT LINCOLN COUNTY  
 COURTHOUSE THIS 19<sup>TH</sup> DAY  
 OF December 20, 03  
*Terry D. ...*  
 LAND INFORMATION OFFICE



NOTES:  
 COORDINATES AND BEARINGS ARE REFERENCED TO THE LINCOLN COUNTY COORDINATE SYSTEM AS DEVELOPED BY THE WISCONSIN DEPARTMENT OF TRANSPORTATION AND WERE DETERMINED BY GPS OBSERVATIONS ON CONTROL POINTS AS SUPPLIED BY THE DOT.

CERTIFIED CORRECT:

Signature *Jeffrey L. Demuth* Date 12/19/03

Index No. E-I: 1-5