

OWENS-ILLINOIS

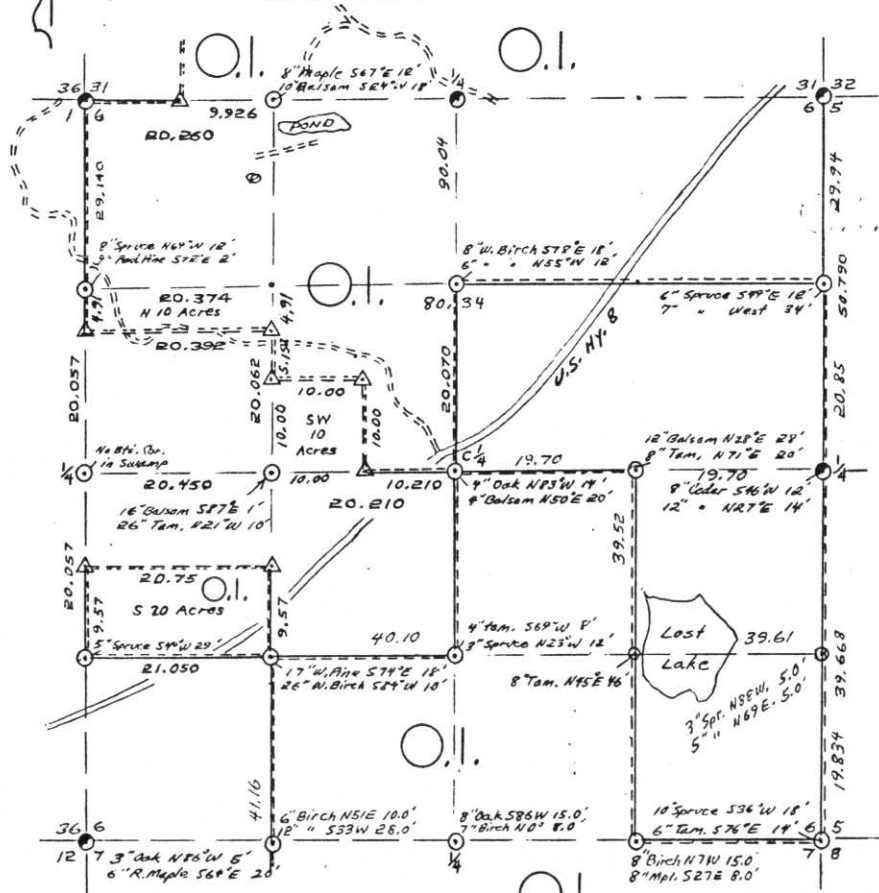
DATE 3/12/75

B FILE

A-E : 1-5

T.35 N R. 7 E SEC. 6  
LINCOLN COUNTY, WIS.

STATEMENT Transit - Compass & Chain Surv. using  
corners found.



LEGEND CORNERS & LINES

- Iron Pipe or Cap
- ⊙ Concrete
- ⊕ Wood Post
- △ Stake 3" to 4" Hdw. or Cedar
- X Hub
- + Spike
- By Others

- True - Blazed - Painted
- True Cut - Blazed
- - - - Approximate - Painted
- ..... Random
- xxxxx Fence
- . - . R. O. W.

MAP BY

W. H. Smith  
Survey By O.I.  
Layout 10 Acre Parcels &  
20 Acre Parcel using existing  
survey corners.  
Smith & Ebert  
Scale 1/2" = 1320.0'

RECORDS EXAMINED \_\_\_\_\_ DWG. NO. \_\_\_\_\_

Org. Surv.  
County

Received from:  
Dehoova Papers Inc.  
Forest District Office  
Minocqua, WI  
54348

LOCAL CONTACTS \_\_\_\_\_

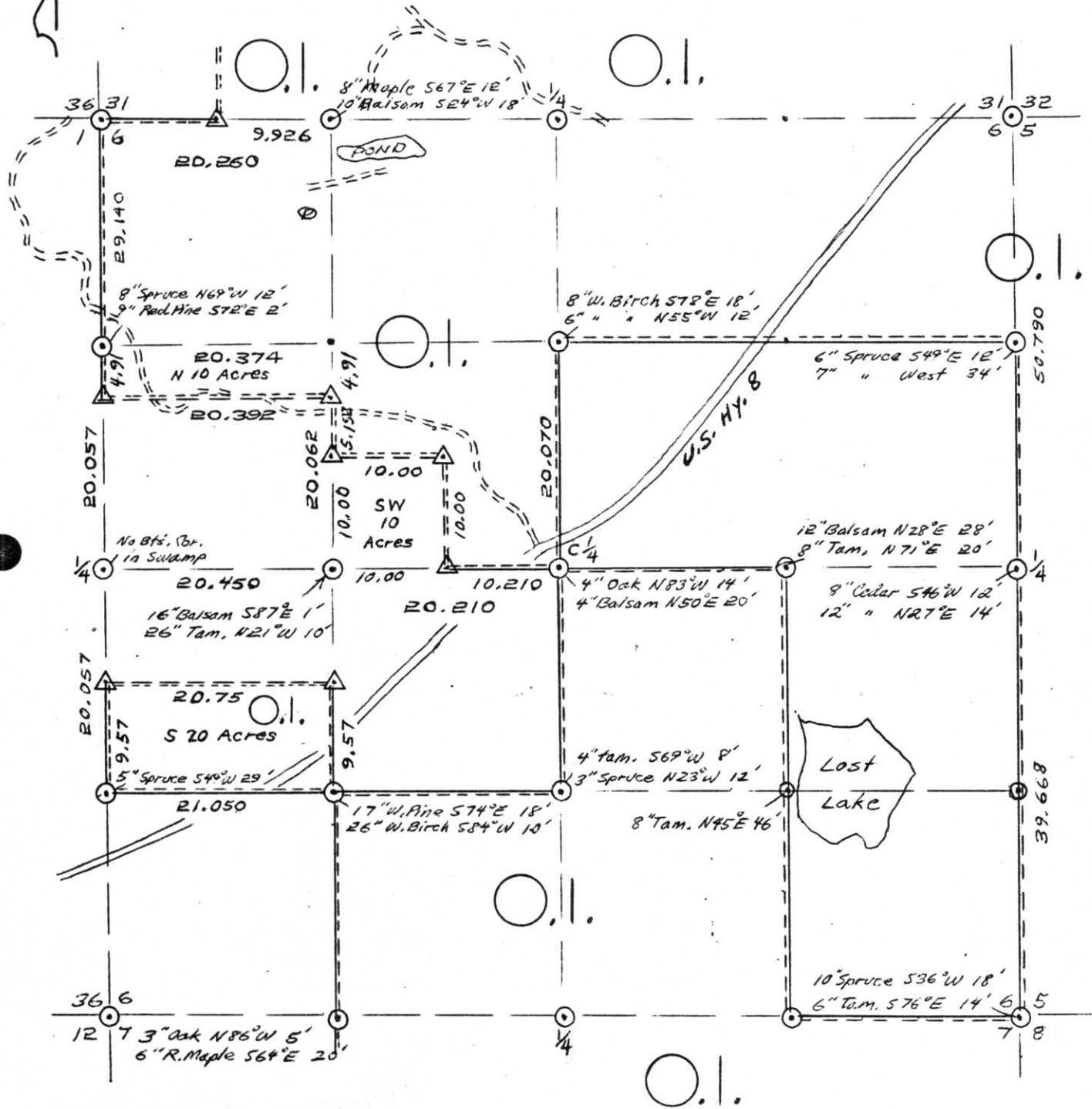
REMARKS \_\_\_\_\_

Prepared By W. H. Smith 3/6/87

RECEIVED AT LINCOLN COUNTY  
COURTHOUSE THIS 18 DAY  
OF April 1989.  
Pat Oriebe  
TAX DESCRIPTION OFFICE

# T.35 N R. 7 E SEC. 6

## LINCOLN COUNTY, WIS.



### LEGEND CORNERS & LINES

- ⊙ Iron Pipe or Cap
- ⊗ Concrete
- ◆ Wood Post
- △ Stake 3" to 4" Hdw, or Cedar
- X Hub
- + Spike

- True - Blazed - Painted
- True Cut - Blazed
- Approximate - Painted
- Random
- xxxxx Fence
- .-.- R.O.W.



### MAP BY

W. H. Stuth  
 Survey By O.I.  
 Layout 10 Acre Parcels &  
 20 Acre Parcel using existing  
 Survey Corners,  
 Stuth & Ebert  
 Scale 1 1/2" = 1320.0'

A-E: 1-5

# LINCOLN COUNTY SECTION SUMMARY

LEGEND

- FOUND GRANITE MONUMENT
-  FOUND LINCOLN COUNTY MONUMENT
-  SET LINCOLN COUNTY MONUMENT
- COORDINATES PER ONEIDA COUNTY

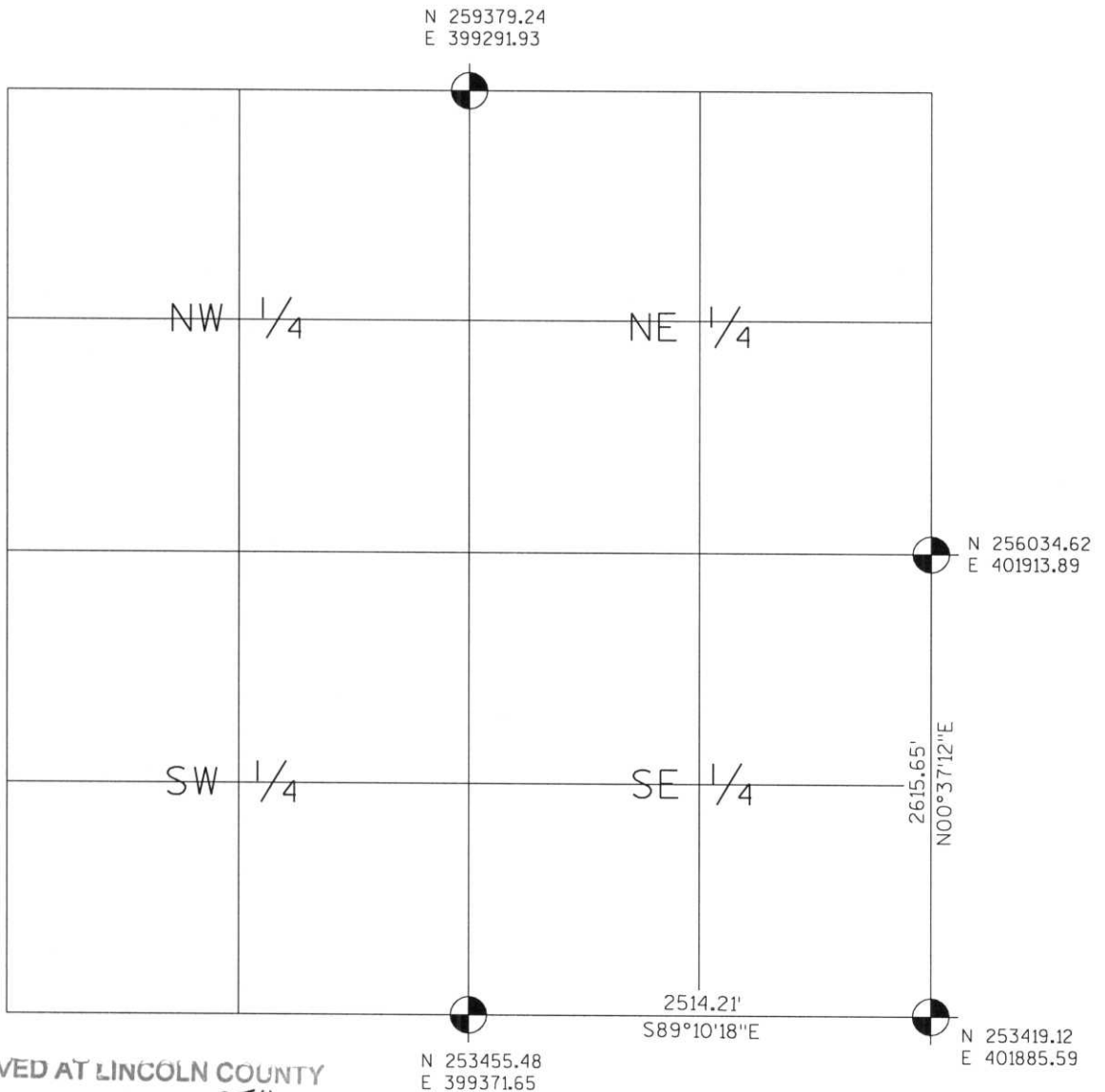
SECTION SUMMARY

06 SECTION

35N TOWNSHIP

7E RANGE

KING TOWN



RECEIVED AT LINCOLN COUNTY  
COURTHOUSE THIS 19<sup>TH</sup> DAY  
OF December 20 03  
*Tony Decker*  
LAND INFORMATION OFFICE



NOTES:  
COORDINATES AND BEARINGS ARE REFERENCED TO THE LINCOLN COUNTY COORDINATE SYSTEM AS DEVELOPED BY THE WISCONSIN DEPARTMENT OF TRANSPORTATION AND WERE DETERMINED BY GPS OBSERVATIONS ON CONTROL POINTS AS SUPPLIED BY THE DOT.

CERTIFIED CORRECT:

Signature *Jeffrey L. Demuth* Date 12/19/03

Index No. A-E: 1-5