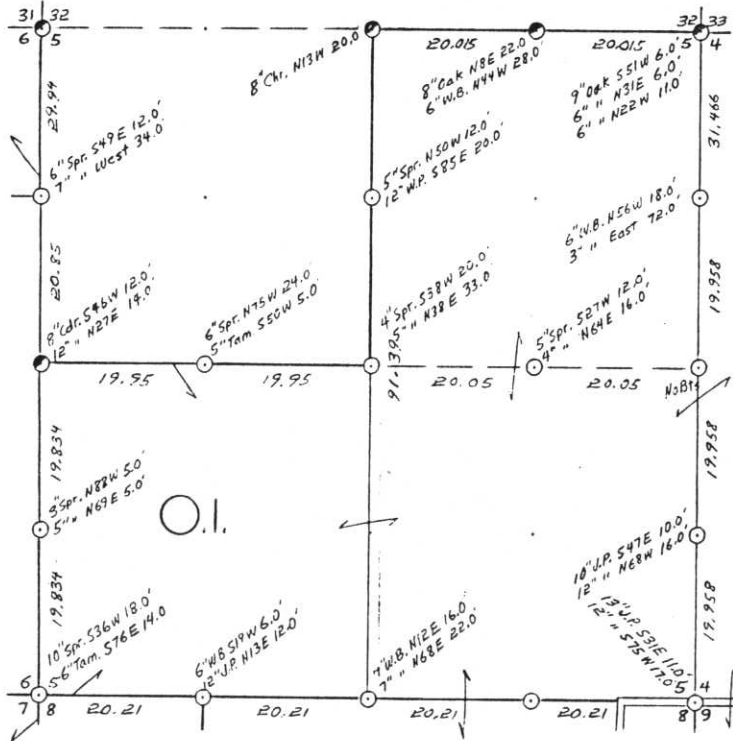


SEC. 5, T.35 N., R. 7 E.,  
LINCOLN COUNTY, WIS.



COR. BT. CODE  
A-B-C-D-E  
F-G-H-I-J  
K-L-M-N-O  
P-Q-R-S-T  
U-V-W-X-Y

SCALE:  
0 5 10 20 CHAINS  
0 330 660 1320 FEET

LEGEND: CORNERS & LINES

○ IRON PIPE OR CAP    ——— BLAZED - PAINTED  
⊙ CONCRETE            ——— BLAZED  
⊕ POST                 ——— APPR. PAINTED  
△ STAKE                ——— RANDOM  
+ SPIKE                - - - FENCE  
⊙ BY OTHER

Surveyed 1960

<b>OWENS-ILLINOIS</b>	
TOMAHAWK WISCONSIN	
FOREST PRODUCTS DIVISION	
Ownership Boundary Survey	
DRAWN BY <i>W. H. Stuth</i>	
DATE	12/19/86

Prepared By *W. H. Stuth* 3/6/87

B FILE

A-E: 5-9

STATEMENT Combination Transit - Staff Compass  
& Chain Surv. using corners found

RECORDS EXAMINED \_\_\_\_\_ DWG. NO. \_\_\_\_\_  
Org. Surv.  
County

Received from:  
*Nekoosa Paper Inc*  
*Forest District Office*  
*Menomonie, WI*  
*54548*

LOCAL CONTACTS \_\_\_\_\_

REMARKS \_\_\_\_\_

RECEIVED AT LINCOLN COUNTY  
COURTHOUSE THIS 18 DAY  
OF April 19 87.  
*Pat Driebe*  
TAX DESCRIPTION OFFICE

# LINCOLN COUNTY SECTION SUMMARY

SECTION  
SUMMARY



05  
SECTION

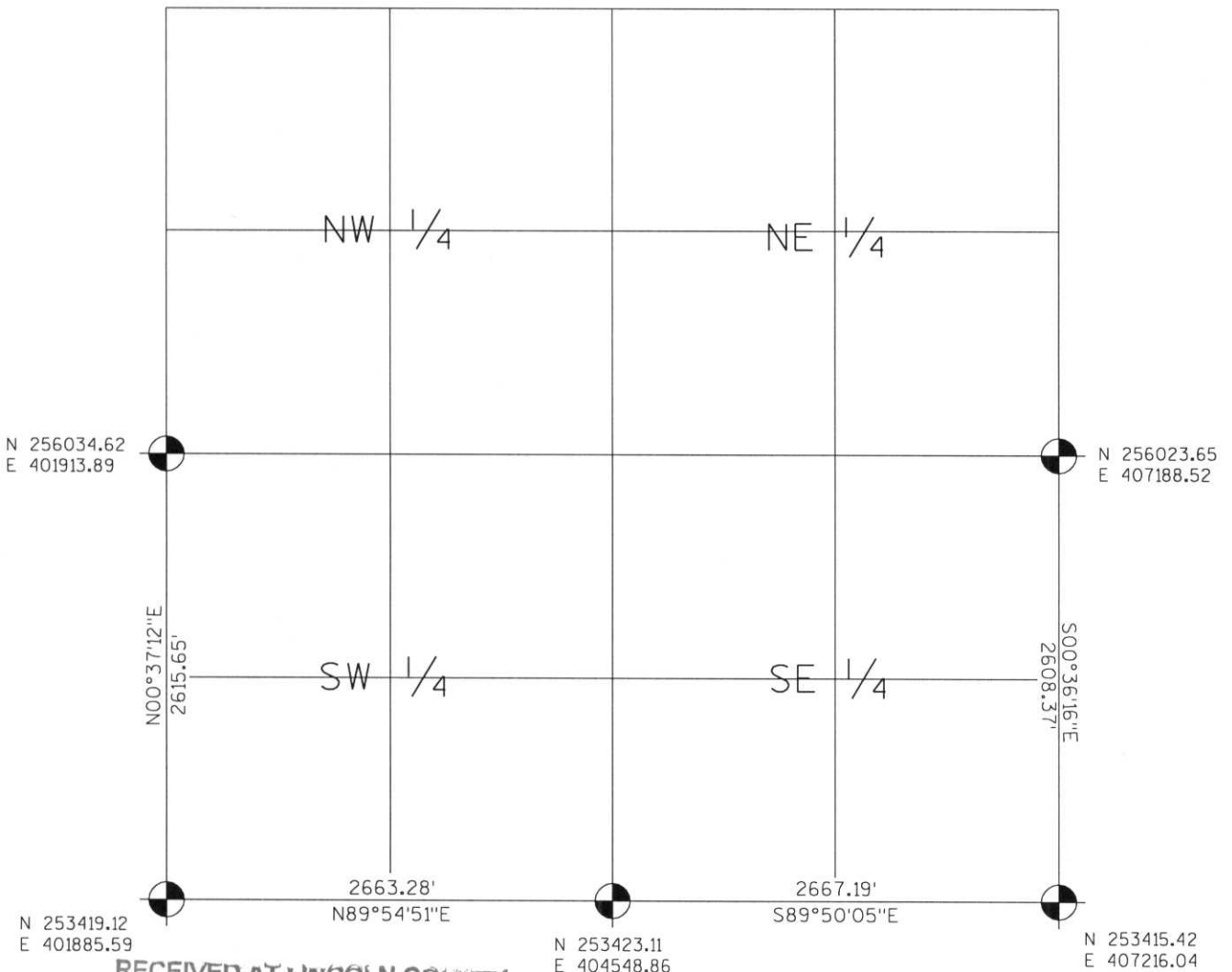
35N  
TOWNSHIP

7E  
RANGE

KING  
TOWN

LEGEND

- FOUND GRANITE MONUMENT
-  FOUND LINCOLN COUNTY MONUMENT
-  SET LINCOLN COUNTY MONUMENT
- COORDINATES PER ONEIDA COUNTY



RECEIVED AT LINCOLN COUNTY  
COURTHOUSE THIS 19<sup>TH</sup> DAY  
OF December 20 03  
*Tommy Daulton*  
LAND INFORMATION OFFICE



NOTES:  
COORDINATES AND BEARINGS ARE REFERENCED TO THE LINCOLN COUNTY COORDINATE SYSTEM AS DEVELOPED BY THE WISCONSIN DEPARTMENT OF TRANSPORTATION AND WERE DETERMINED BY GPS OBSERVATIONS ON CONTROL POINTS AS SUPPLIED BY THE DOT.

CERTIFIED CORRECT:

  
 Signature \_\_\_\_\_ Date 12/19/03

Index No. A-E:5-9