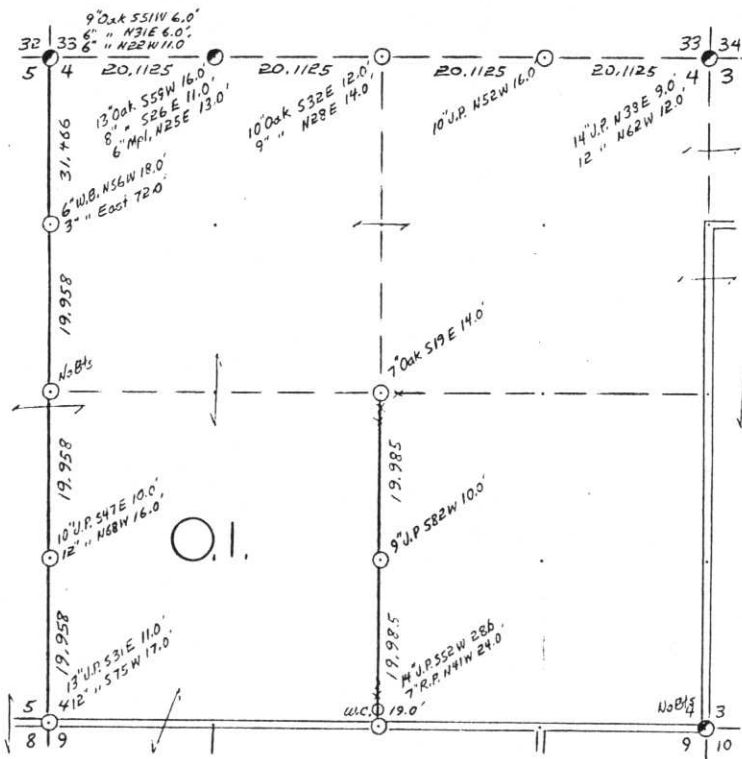


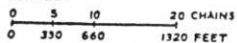
SEC. 4 , T.35 N., R. 7 E.,

LINCOLN COUNTY, WIS.



COR. BT. CODE
A-B-C-D-E
F-G-H-I-J
K-L-M-N-O
P-Q-R-S-T
U-V-W-X-Y

SCALE:



LEGEND: CORNERS & LINES

- | | | |
|--------------------|---------|------------------|
| ○ IRON PIPE OR CAP | BLAZED | BLAZED - PAINTED |
| ⊗ CONCRETE | — | BLAZED |
| ⊕ POST | 2.5 2.5 | APPR. - PAINTED |
| △ STAKE | - - - | RANDOM |
| † SPIKE | x x x | FENCE |
| ● BY OTHERS | | |

Surveyed 1960

OWENS-ILLINOIS
TOMAHAWK ① WISCONSIN
FOREST PRODUCTS DIVISION

Ownership Boundary Survey

DRAWN BY *W. H. Smith*

DATE 12/19/86

Prepared By W.H. Smith 3/6/87

B FILE

A-E : 9-13

STATEMENT Staff Compass & Chain Surv. using
corners found

RECORDS EXAMINED _____ DWG. NO. _____

Org. Surv.

County

Received from:
Nekoosa Papers Inc.
Forest District Office
Menocqua, WZ
54548

LOCAL CONTACTS _____

REMARKS _____

RECEIVED AT LINCOLN COUNTY
COURTHOUSE THIS 18 DAY

Or April 19 89

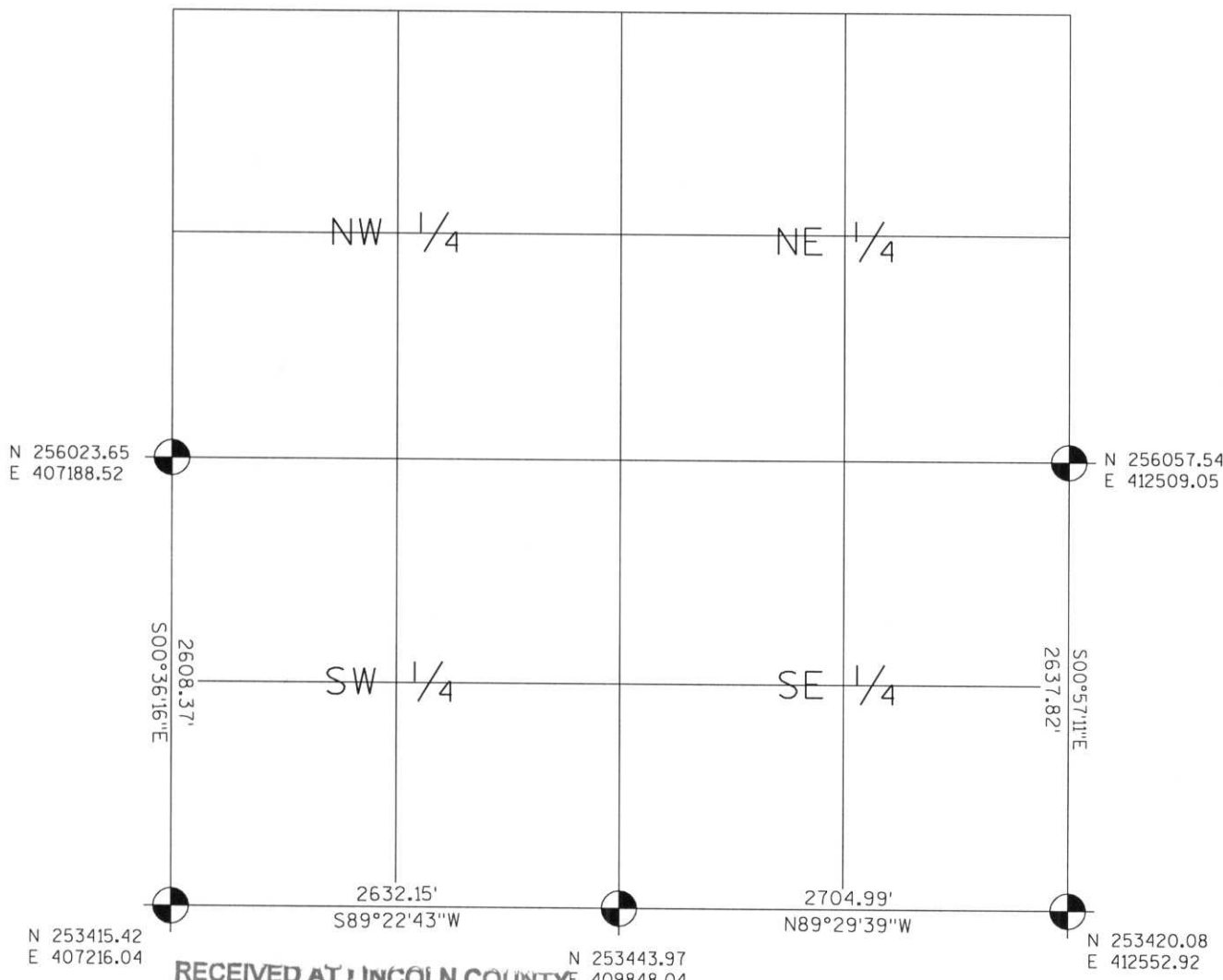
Tax Description Office

LINCOLN COUNTY SECTION SUMMARY

LEGEND

- FOUND GRANITE MONUMENT
- FOUND LINCOLN COUNTY MONUMENT
- SET LINCOLN COUNTY MONUMENT
- COORDINATES PER ONEIDA COUNTY

SECTION SUMMARY 04 SECTION 35N TOWNSHIP 7E RANGE KING TOWN



RECEIVED AT LINCOLN COUNTY COURTHOUSE THIS 19TH DAY OF December 20 03
Zany Dahl
LAND INFORMATION OFFICE



NOTES:
COORDINATES AND BEARINGS ARE REFERENCED TO THE LINCOLN COUNTY COORDINATE SYSTEM AS DEVELOPED BY THE WISCONSIN DEPARTMENT OF TRANSPORTATION AND WERE DETERMINED BY GPS OBSERVATIONS ON CONTROL POINTS AS SUPPLIED BY THE DOT.

CERTIFIED CORRECT:

Signature: Jeffrey L. Demuth Date: 12/19/03

Index No. A-E : 9-13