



# LINCOLN COUNTY SECTION SUMMARY

**LEGEND**

- FOUND GRANITE MONUMENT
-  FOUND LINCOLN COUNTY MONUMENT
-  SET LINCOLN COUNTY MONUMENT
- COORDINATES PER ONEIDA COUNTY

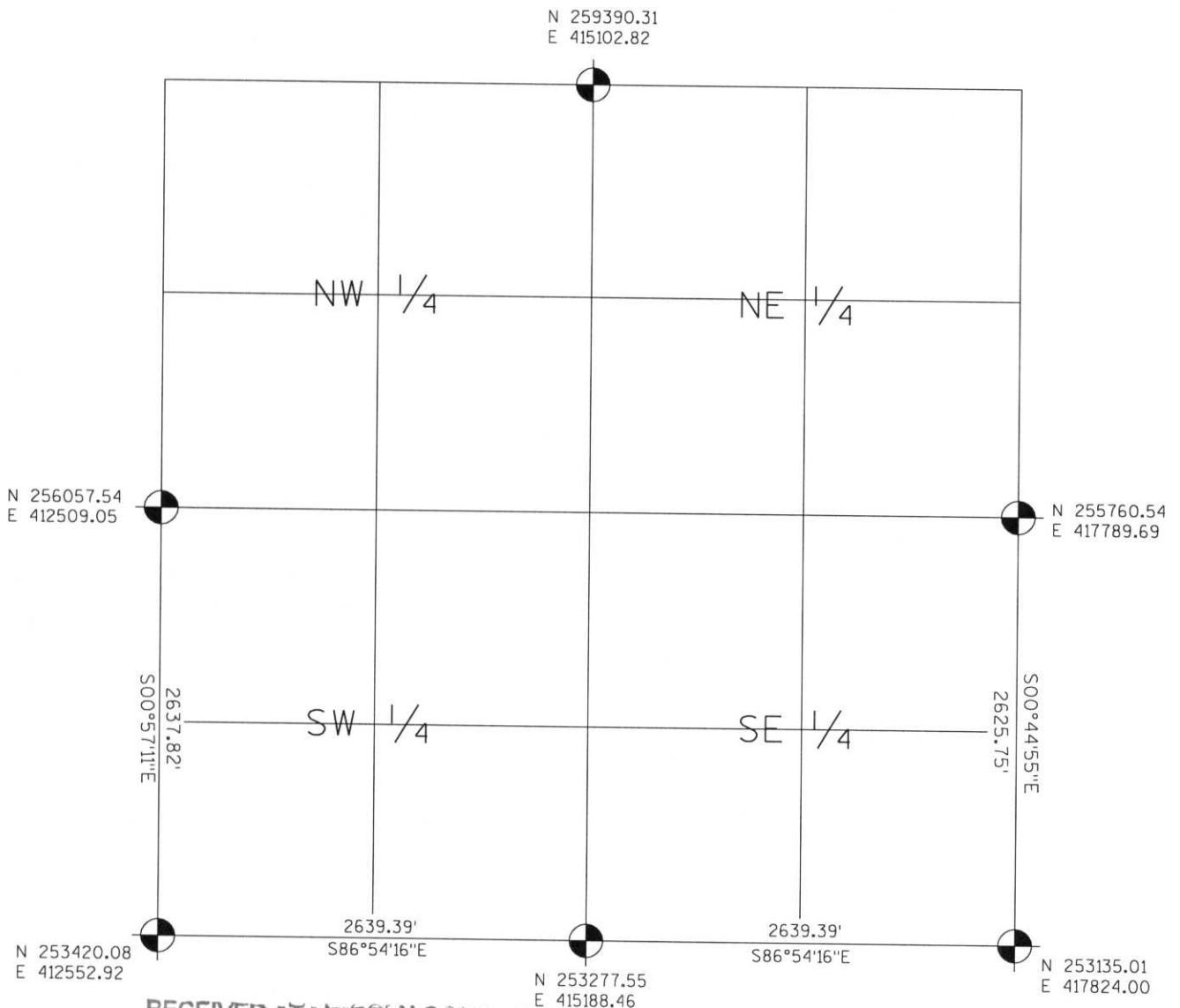
SECTION SUMMARY

03 SECTION

35N TOWNSHIP

7E RANGE

KING TOWN



RECEIVED AT LINCOLN COUNTY  
 COURTHOUSE THIS 19<sup>TH</sup> DAY  
 OF December 20 03  
*Tony Dath*  
 LAND INFORMATION OFFICE

NOTES:  
 COORDINATES AND BEARINGS ARE REFERENCED TO THE LINCOLN COUNTY COORDINATE SYSTEM AS DEVELOPED BY THE WISCONSIN DEPARTMENT OF TRANSPORTATION AND WERE DETERMINED BY GPS OBSERVATIONS ON CONTROL POINTS AS SUPPLIED BY THE DOT.



CERTIFIED CORRECT:

*Jeffrey L. Demuth* 12/19/03  
 Signature Date

Index No. A-E : 13-17