

# LINCOLN COUNTY SECTION SUMMARY

LEGEND

- ☐ FOUND GRANITE MONUMENT
- ⊕ FOUND 2" I.P. WITH BRASS CAP
- SET LINCOLN COUNTY MONUMENT
- △ COORDINATES PER ONEIDA COUNTY
- ◇ 3" I.P., FOUND

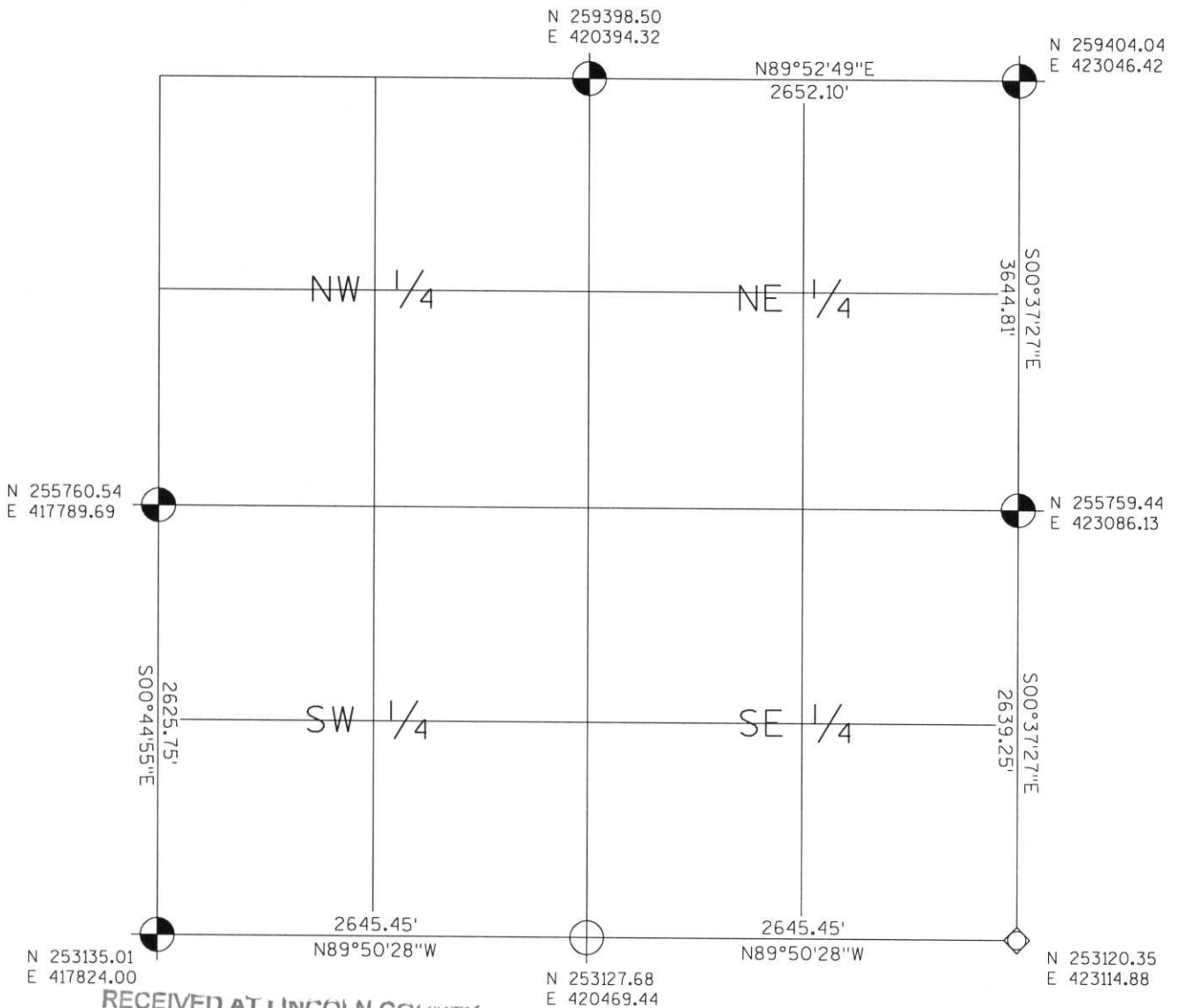
SECTION SUMMARY

02 SECTION

35N TOWNSHIP

7E RANGE

KING TOWN



RECEIVED AT LINCOLN COUNTY  
 COURTHOUSE THIS 19<sup>TH</sup> DAY  
 OF December 20 03  
*Tony Dalk*  
 LAND INFORMATION OFFICE

NOTES:  
 COORDINATES AND BEARINGS ARE REFERENCED TO THE LINCOLN COUNTY COORDINATE SYSTEM AS DEVELOPED BY THE WISCONSIN DEPARTMENT OF TRANSPORTATION AND WERE DETERMINED BY GPS OBSERVATIONS ON CONTROL POINTS AS SUPPLIED BY THE DOT.



CERTIFIED CORRECT:

*Jeffrey L. Demuth* 12/19/03  
 Signature Date

Index No. A-E: 17-21