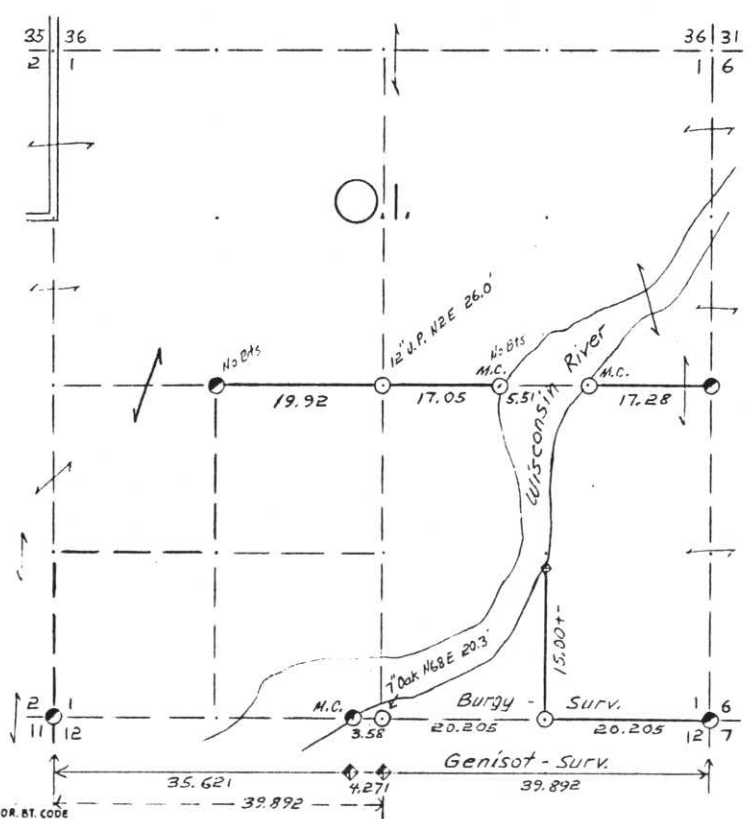


SEC. 1, T.35 N., R. 7 E.,  
LINCOLN COUNTY, WIS.



COR. BT. CODE  
A-B-C-D-E  
F-G-H-I-J  
K-L-M-N-O  
P-Q-R-S-T  
U-V-W-X-Y

SCALE:  
0 5 10 20 CHAINS  
0 330 660 1320 FEET

LEGEND: CORNERS & LINES  
 ○ IRON PIPE OR CAP  
 ⊙ CONCRETE  
 ⊕ POST  
 △ STAKE  
 † SPIKE  
 ● BY OTHERS  
 --- BLAZED - PAINTED  
 --- BLAZED  
 --- APR. - PAINTED  
 --- RANDOM  
 --- FENCE

Surveyed 1961  
**OWENS-ILLINOIS**  
 TOMAHAWK WISCONSIN  
 FOREST PRODUCTS DIVISION  
 Ownership Boundary Survey  
 DRAWN BY W.H. Stuth  
 DATE 12/22/86

Prepared By W.H. Stuth 3/6/87

**B FILE**

A-E: 21-25

STATEMENT Transit & Chain Surv. using corners  
found

RECORDS EXAMINED \_\_\_\_\_ DWG. NO. \_\_\_\_\_  
Org. Surv.  
County

Received from:  
Nebraska Papers Inc.  
Forest District Office  
Minocqua, WI  
154348

LOCAL CONTACTS \_\_\_\_\_

REMARKS \_\_\_\_\_

RECEIVED AT LINCOLN COUNTY  
 COURTHOUSE THIS 18 DAY  
 of April 1989.  
Pat Trube  
 TAX DESCRIPTION OFFICE

# LINCOLN COUNTY SECTION SUMMARY

## LEGEND

- FOUND GRANITE MONUMENT
- FOUND LINCOLN COUNTY MONUMENT
- SET LINCOLN COUNTY MONUMENT
- COORDINATES PER ONEIDA COUNTY
- 3" I.P., FOUND
- COMPUTED COORDINATES

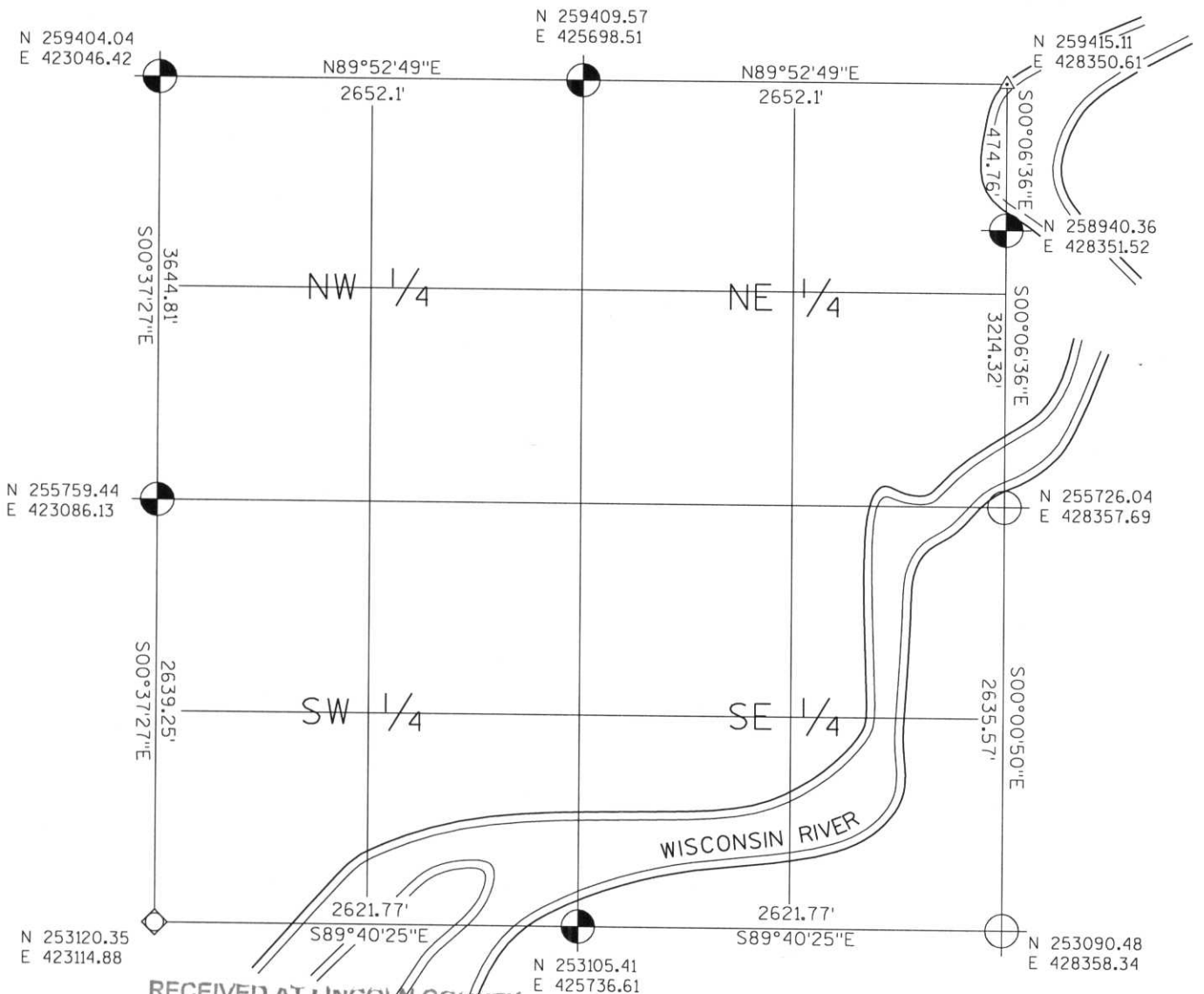
SECTION SUMMARY

01  
SECTION

35N  
TOWNSHIP

7E  
RANGE

KING  
TOWN



RECEIVED AT LINCOLN COUNTY  
COURTHOUSE THIS 19<sup>TH</sup> DAY  
OF December 20 03  
Tony Dalko  
LAND INFORMATION OFFICE



NOTES:  
COORDINATES AND BEARINGS ARE REFERENCED TO THE LINCOLN COUNTY COORDINATE SYSTEM AS DEVELOPED BY THE WISCONSIN DEPARTMENT OF TRANSPORTATION AND WERE DETERMINED BY GPS OBSERVATIONS ON CONTROL POINTS AS SUPPLIED BY THE DOT.

CERTIFIED CORRECT:

Jeffrey L. Demuth 12/19/03  
Signature Date

Index No. A-E : 21-25