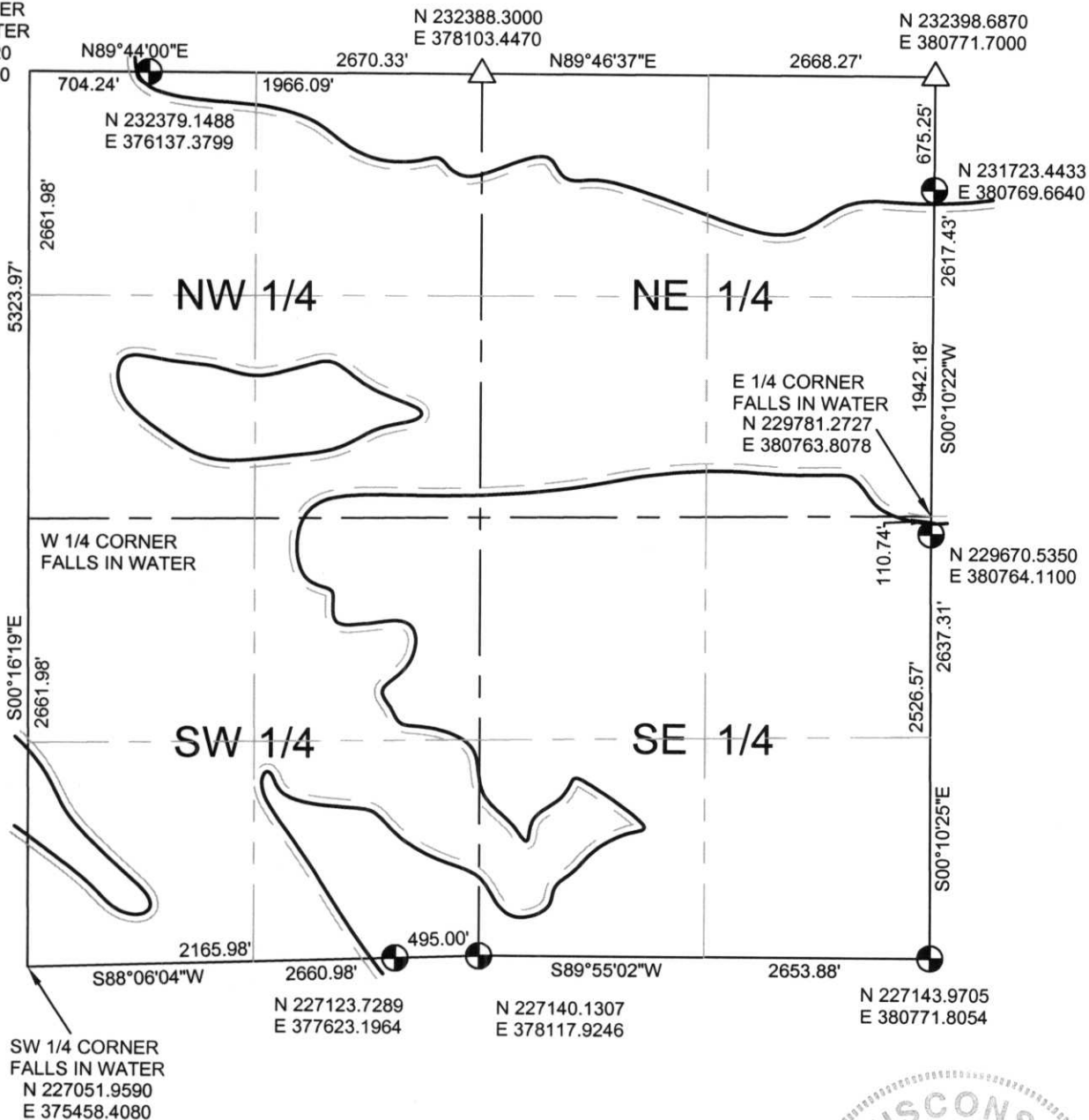




SECTION SUMMARY
33 - 35N - 6E
Section Township Range
BRADLEY
Town

NW 1/4 CORNER
FALLS IN WATER
N 232375.8720
E 375433.1490



NOTES:
COORDINATES AND BEARINGS ARE REFERENCED TO THE LINCOLN COUNTY COORDINATE SYSTEM AS DEVELOPED BY THE WISCONSIN DEPARTMENT OF TRANSPORTATION AND WERE DETERMINED BY GPS OBSERVATIONS ON CONTROL POINTS AS SUPPLIED BY THE DOT.

- LEGEND**
- ⊕ - Lincoln County Monument
 - - Stone Monument
 - - 2" Iron Pipe
 - - Iron Bar
 - △ - PK NAIL



RECEIVED AT LINCOLN COUNTY
COURTHOUSE THIS 21ST DAY
OF December 20 01
Tony Dalber
LAND INFORMATION OFFICE

CERTIFIED CORRECT:
Thomas A. Radenz
Registered Land Surveyor
DATE: 12/21/01

44-913