

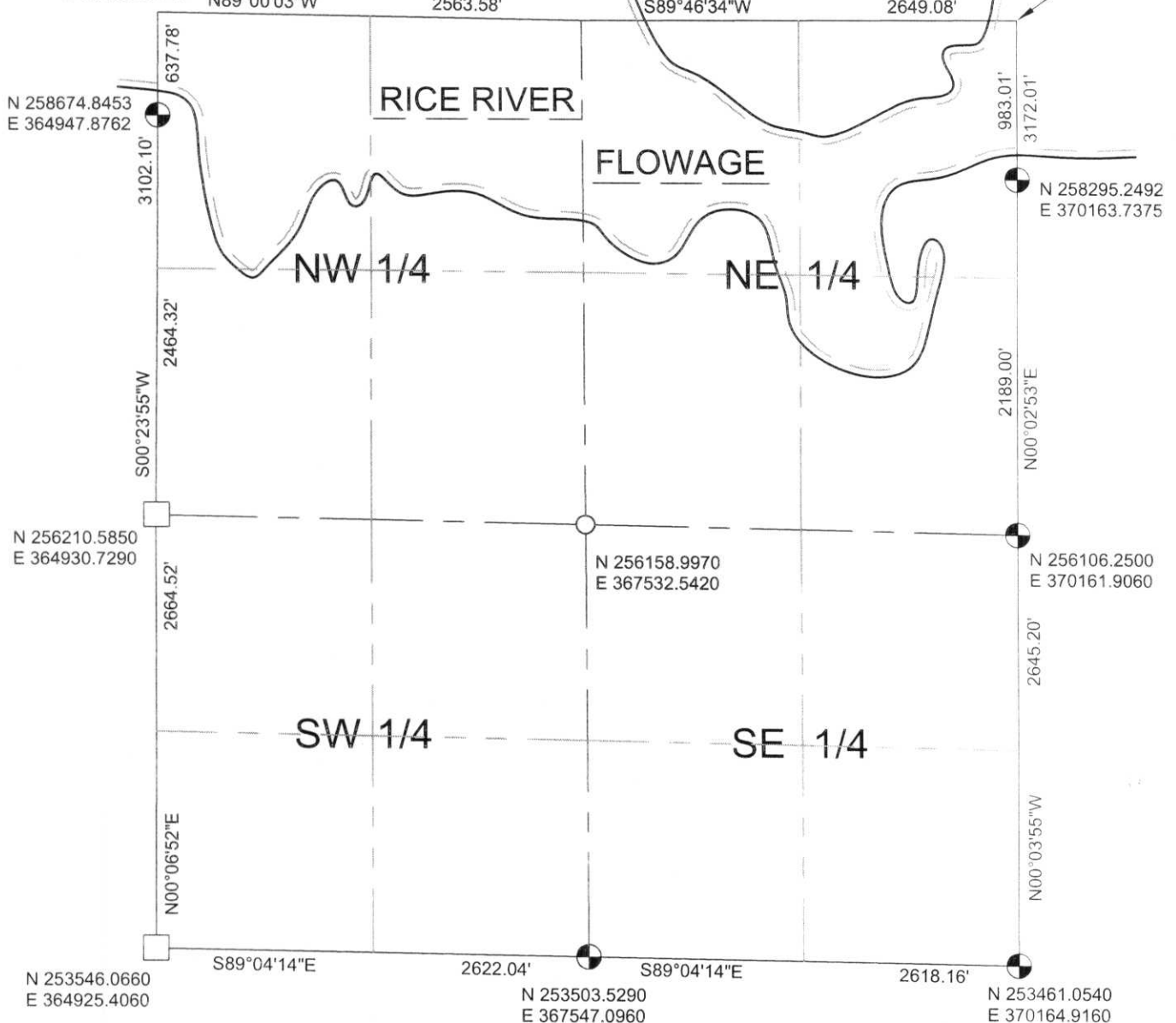
6 - 35N - 6E
Section Township Range
BRADLEY
Town



NW 1/4 CORNER
FALLS IN WATER
N 259312.6100
E 364952.3140

N 1/4 CORNER
FALLS IN WATER
N 259267.9097
E 367515.5026

NE 1/4 CORNER
FALLS IN WATER
N 259278.2569
E 370164.5599



NOTES:
COORDINATES AND BEARINGS ARE REFERENCED TO THE LINCOLN COUNTY COORDINATE SYSTEM AS DEVELOPED BY THE WISCONSIN DEPARTMENT OF TRANSPORTATION AND WERE DETERMINED BY GPS OBSERVATIONS ON CONTROL POINTS AS SUPPLIED BY THE DOT.

- LEGEND**
- ⊙ - Lincoln County Monument
 - - Stone Monument
 - - 2" Iron Pipe
 - - Iron Bar
 - △ - Other

RECEIVED AT LINCOLN COUNTY
COURTHOUSE THIS 21ST DAY
OF December 20 01
Tony Dalen
LAND INFORMATION OFFICE



CERTIFIED CORRECT:
Thomas A. Radenz
Registered Land Surveyor
DATE: 12/21/01

14.E-1,5