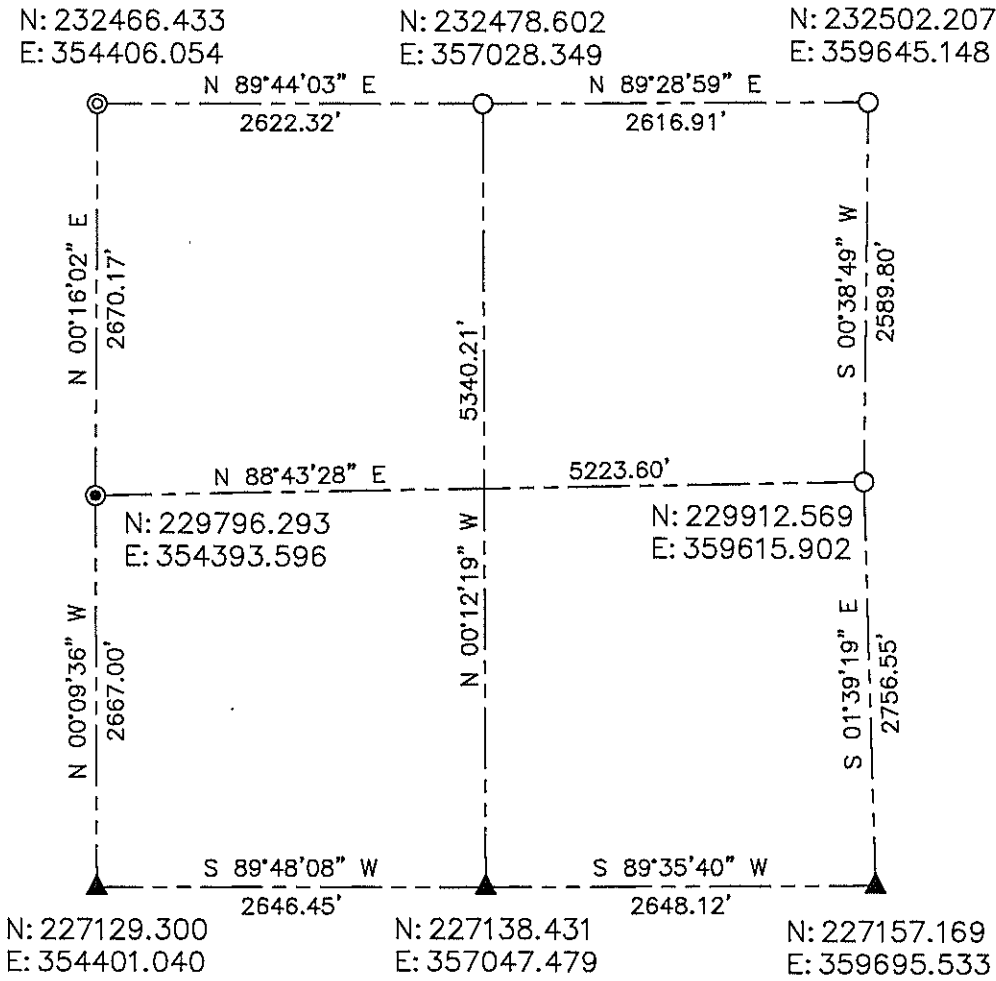


**LINCOLN COUNTY SECTION SUMMARY  
SECTION 35  
TOWNSHIP 35 NORTH RANGE 5 EAST  
TOWN OF WILSON**



BEARINGS AND COORDINATES ARE BASED ON THE LINCOLN COUNTY COORDINATE SYSTEM

BRADLEY TEMP  
N: 227217.192  
E: 361914.008

**LEGEND**

- = REBAR WITH ALUMINUM CAP
- = 2in. OD IRON PIPE FOUND
- ⊙ = 1 1/4in. OD IRON PIPE FOUND
- ⦿ = 1in. OD IRON PIPE FOUND
- ▲ = COORDINATES FROM COUNTY SURVEY RECORDS

CERTIFIED CORRECT:



DARREN B. KRZANOWSKI RLS 2663  
REGISTERED LAND SURVEYOR  
DATED THIS 6TH DAY OF JANUARY 2012

RECEIVED BY LINCOLN COUNTY  
SURVEYOR THIS 20<sup>TH</sup> DAY  
OF January 20 12  
*Terry Dahl*  
COUNTY SURVEYOR

**CENTRAL STAKING INC**  
2523 POST ROAD  
STEVENS POINT, WI 54481  
OFFICE 715-345-6904 FAX 715-345-7728