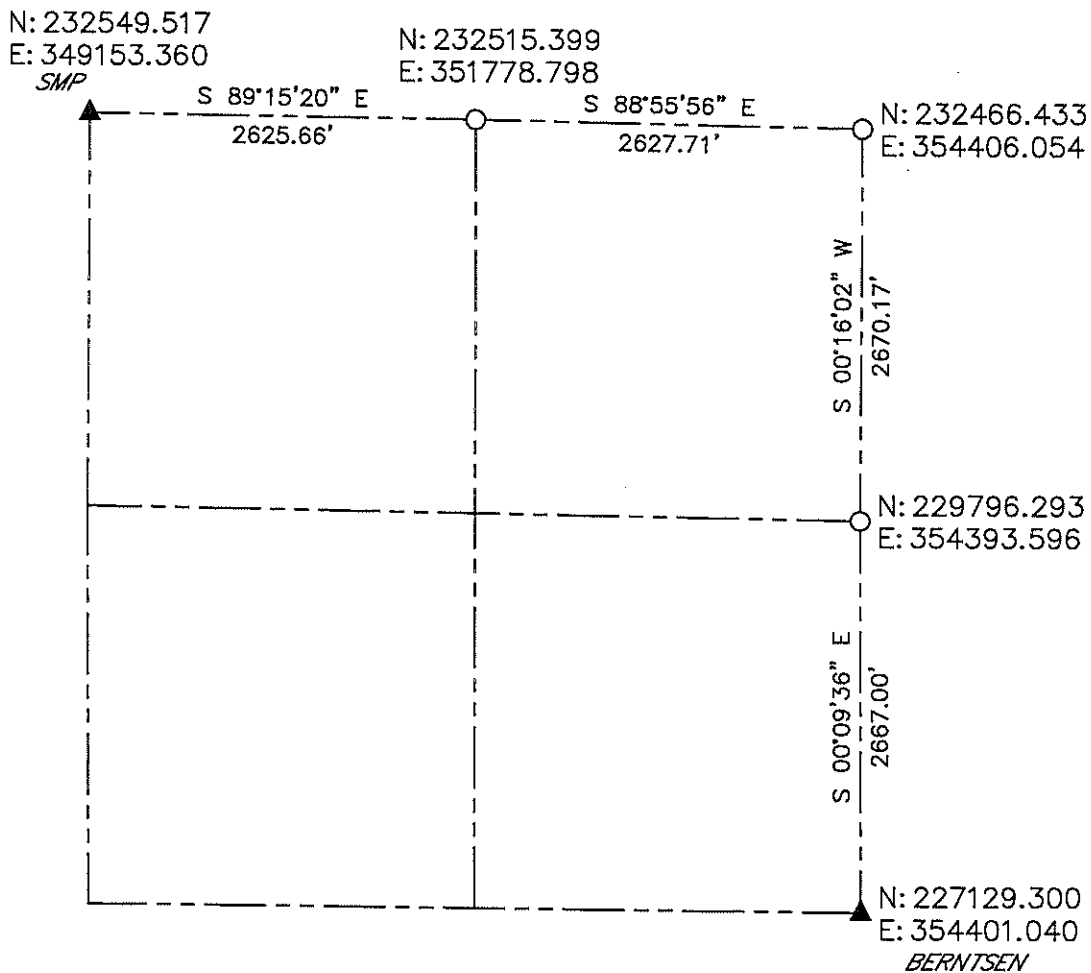


**LINCOLN COUNTY SECTION SUMMARY
SECTION 34
TOWNSHIP 35 NORTH RANGE 5 EAST
TOWN OF WILSON**



BEARINGS AND COORDINATES ARE BASED ON THE LINCOLN COUNTY COORDINATE SYSTEM

CERTIFIED CORRECT:



DARREN B. KRZANOWSKI RLS 2663
REGISTERED LAND SURVEYOR
DATED THIS 18TH DAY OF JANUARY, 2012

LEGEND

- = 1 1/4in. IRON PIPE FOUND
- ▲ = COORDINATES FROM COUNTY SURVEY RECORDS

RECEIVED BY LINCOLN COUNTY
SURVEYOR THIS 20TH DAY
OF January 20 12
James Dallen
COUNTY SURVEYOR

CENTRAL STAKING INC
2523 POST ROAD
STEVENS POINT, WI 54481
OFFICE 715-345-6904 FAX 715-345-7728