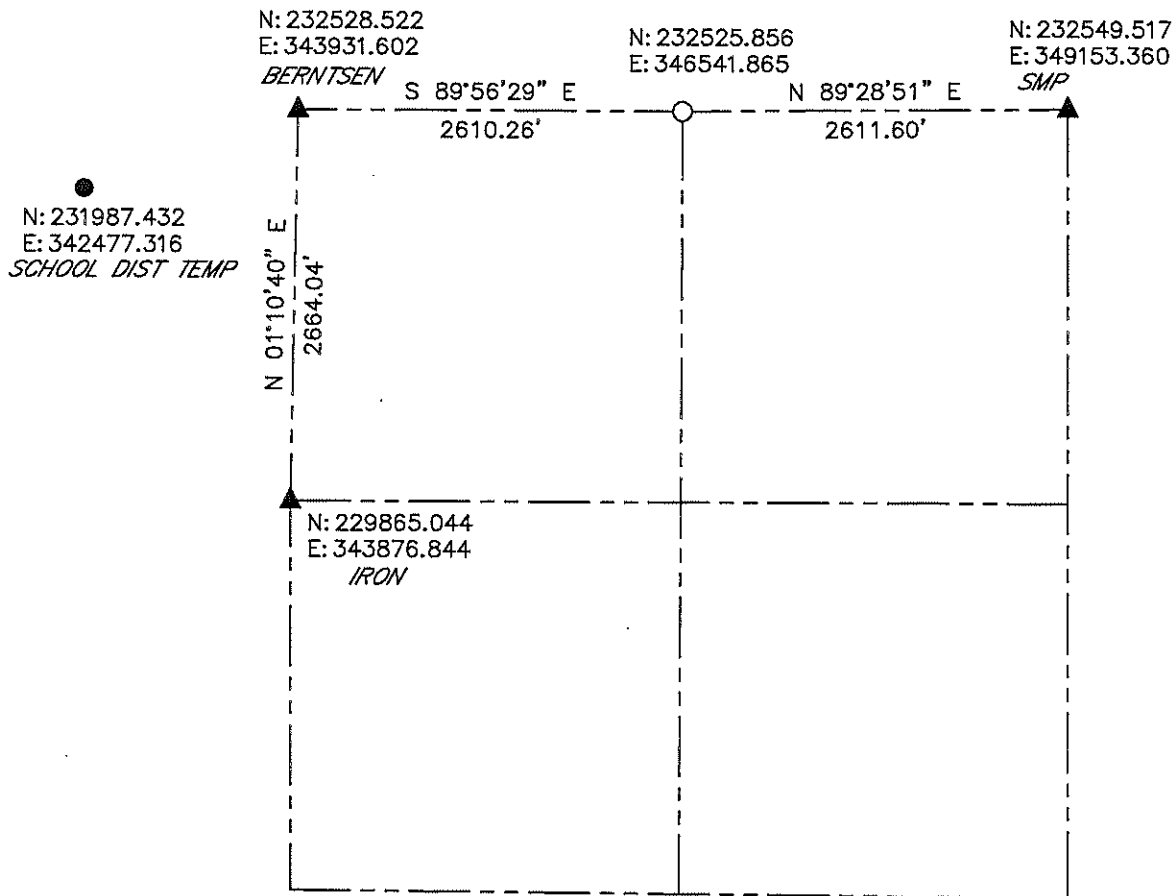


**LINCOLN COUNTY SECTION SUMMARY
SECTION 33
TOWNSHIP 35 NORTH RANGE 5 EAST
TOWN OF WILSON**



BEARINGS AND COORDINATES ARE BASED ON THE LINCOLN COUNTY COORDINATE SYSTEM

LEGEND

- = 3/4in. REBAR W/ALUMINUM CAP
- = 2in. OD IRON PIPE
- ▲ = COORDINATES PER COUNTY SURVEY RECORDS

CERTIFIED CORRECT:



DARREN B. KRZANOWSKI RLS 2663
 REGISTERED LAND SURVEYOR
 DATED THIS 18TH DAY OF JANUARY, 2012

RECEIVED BY LINCOLN COUNTY
 SURVEYOR THIS 20TH DAY
 OF January 20, 12
Tommy Dalk
 COUNTY SURVEYOR

CENTRAL STAKING INC
 2523 POST ROAD
 STEVENS POINT, WI 54481
 OFFICE 715-345-6904 FAX 715-345-7728