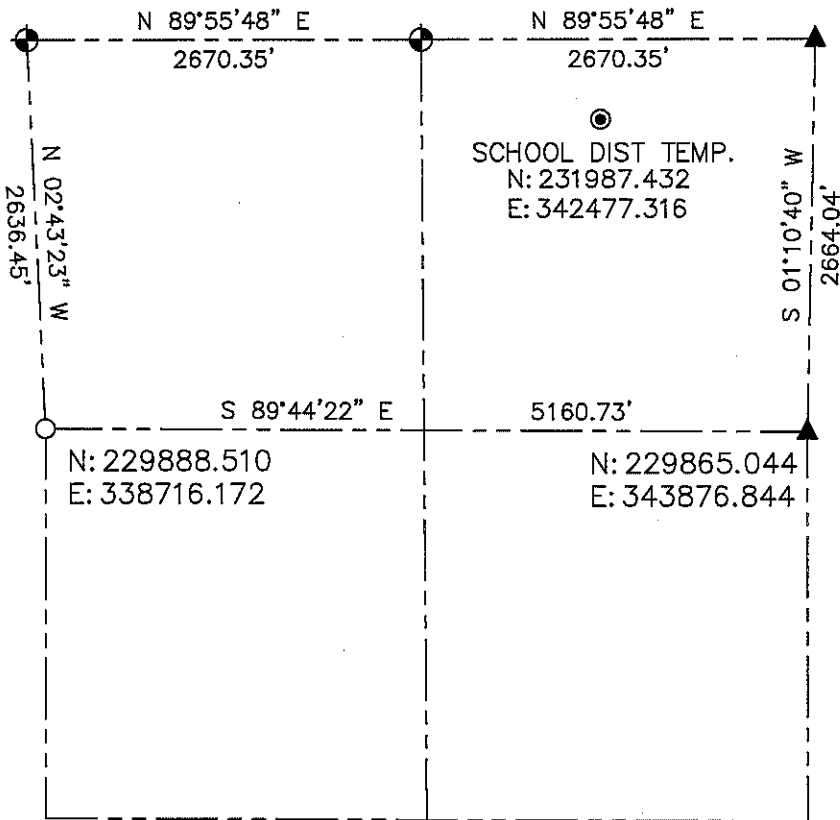


**LINCOLN COUNTY SECTION SUMMARY  
SECTION 32  
TOWNSHIP 35 NORTH RANGE 5 EAST  
TOWN OF WILSON**

N: 232521.986      N: 232525.254      N: 232528.522  
E: 338590.912      E: 341261.257      E: 343931.602



BEARINGS AND COORDINATES ARE BASED ON THE LINCOLN COUNTY COORDINATE SYSTEM

RECEIVED BY LINCOLN COUNTY  
SURVEYOR THIS 10<sup>TH</sup> DAY  
OF January 20 13  
*Tommy Dabbs*  
COUNTY SURVEYOR

CERTIFIED CORRECT:



DARREN B. KRZANOWSKI RLS 2663  
REGISTERED LAND SURVEYOR  
DATED THIS 10TH DAY OF JANUARY, 2013

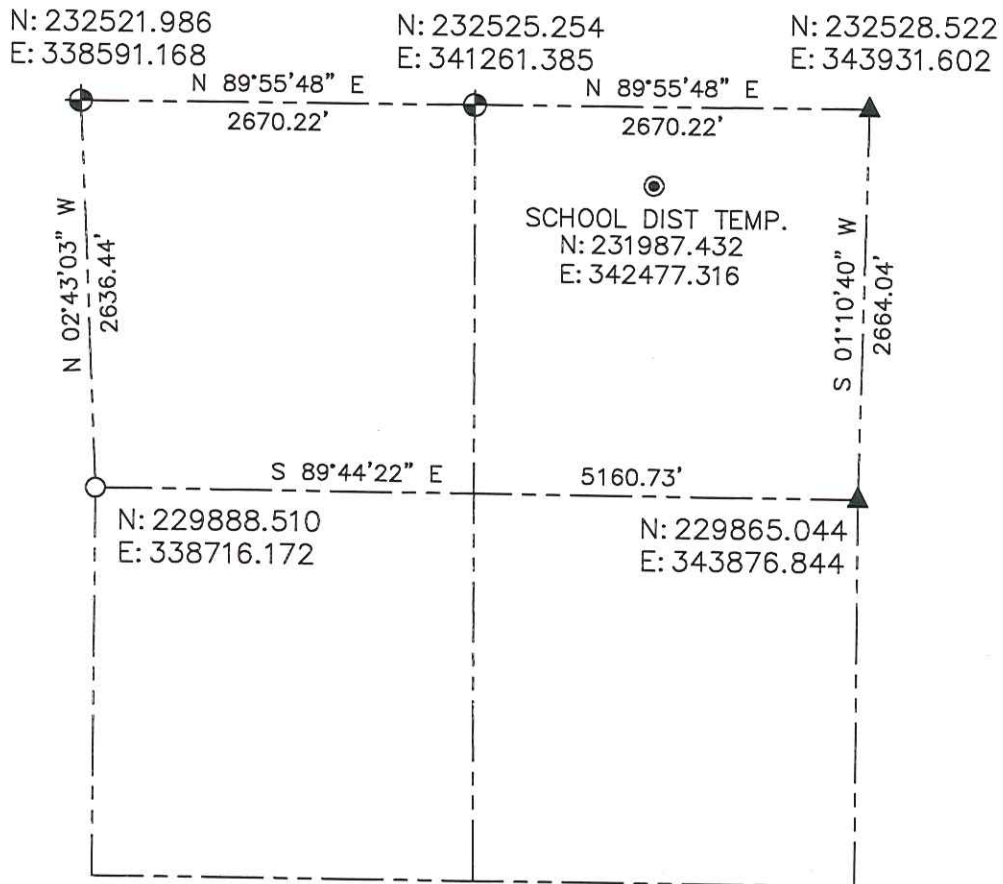
**LEGEND**

- ⊕ = LINCOLN CO. ALUMINUM CAST MONUMENT SET
- = 1 1/4in. OD IRON PIPE
- ⊙ = REBAR WITH ALUMINUM CAP
- ▲ = LOCATION PER COUNTY SURVEY RECORDS

**CENTRAL STAKING INC**  
2523 POST ROAD  
STEVENS POINT, WI 54481  
OFFICE 715-345-6904 FAX 715-345-7728

**Sec. 32**

**LINCOLN COUNTY SECTION SUMMARY  
SECTION 32  
TOWNSHIP 35 NORTH RANGE 5 EAST  
TOWN OF WILSON**



BEARINGS AND COORDINATES ARE BASED ON THE LINCOLN COUNTY COORDINATE SYSTEM

RECEIVED BY LINCOLN COUNTY  
 SURVEYOR THIS 22<sup>ND</sup> DAY  
 OF February 20 12  
*Tom Dalt*  
 COUNTY SURVEYOR

CERTIFIED CORRECT:



*Darren B. Krzanowski*  
 DARREN B. KRZANOWSKI RLS 2663  
 REGISTERED LAND SURVEYOR  
 DATED THIS 20TH DAY OF FEBRUARY, 2012

**LEGEND**

- ⊕ = LINCOLN CO. ALUMINUM CAST MONUMENT SET
- = 1 1/4in. OD IRON PIPE
- ⊙ = REBAR WITH ALUMINUM CAP
- ▲ = LOCATION PER COUNTY SURVEY RECORDS

**CENTRAL STAKING INC**  
 2523 POST ROAD  
 STEVENS POINT, WI 54481  
 OFFICE 715-345-6904 FAX 715-345-7728

Sec. 32