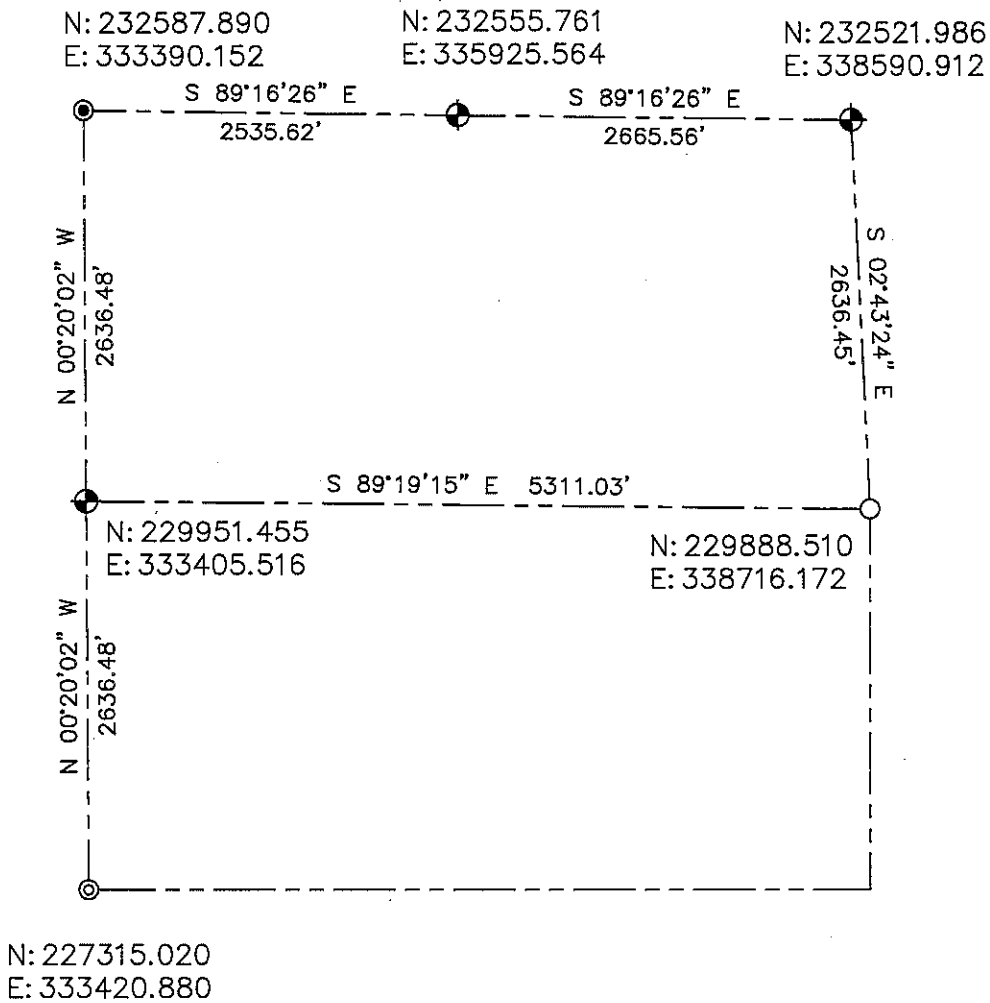


**LINCOLN COUNTY SECTION SUMMARY
SECTION 31
TOWNSHIP 35 NORTH RANGE 5 EAST
TOWN OF WILSON**



BEARINGS AND COORDINATES ARE BASED ON THE LINCOLN COUNTY COORDINATE SYSTEM

RECEIVED BY LINCOLN COUNTY
SURVEYOR THIS 10TH DAY
OF January 20 13
[Signature]
COUNTY SURVEYOR

CERTIFIED CORRECT:



[Signature]
DARREN B. KRZANOWSKI RLS 2663
REGISTERED LAND SURVEYOR
DATED THIS 10TH DAY OF JANUARY 2013

LEGEND

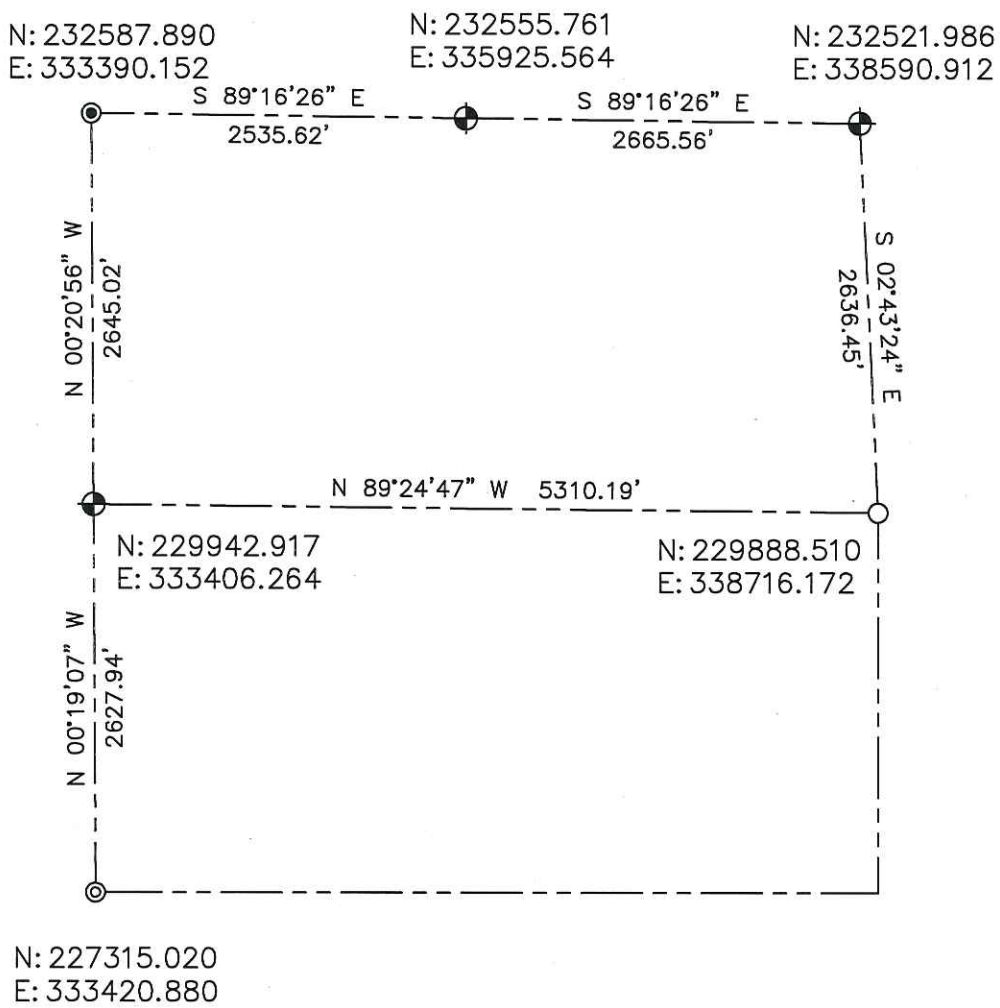
- ⊕ = LINCOLN COUNTY CAST ALUMINUM MONUMENT
- = 1 1/4in. OD IRON PIPE
- ⊙ = COORDINATES BY OTHERS
- ⊗ = LINCOLN COUNTY DRIVE-ABLE ALUMINUM MONUMENT

CENTRAL STAKING INC
2523 POST ROAD
STEVENS POINT, WI 54481
OFFICE 715-345-6904 FAX 715-345-7728

SHEET 1 OF 1

Sec. 31

**LINCOLN COUNTY SECTION SUMMARY
SECTION 31
TOWNSHIP 35 NORTH RANGE 5 EAST
TOWN OF WILSON**



BEARINGS AND COORDINATES ARE BASED ON THE LINCOLN COUNTY COORDINATE SYSTEM

RECEIVED BY LINCOLN COUNTY
SURVEYOR THIS 17TH DAY
OF December 20 12
Zamy Wall
COUNTY SURVEYOR

CERTIFIED CORRECT:



DARREN B. KRZANOWSKI RLS 2663
REGISTERED LAND SURVEYOR
DATED THIS 13TH DAY OF DECEMBER 2012

LEGEND

- ⊕ = LINCOLN COUNTY CAST ALUMINUM MONUMENT
- = 1 1/4in. OD IRON PIPE
- ⊙ = COORDINATES BY OTHERS
- ⊙ = LINCOLN COUNTY DRIVE-ABLE ALUMINUM MONUMENT

CENTRAL STAKING INC
2523 POST ROAD
STEVENS POINT, WI 54481
OFFICE 715-345-6904 FAX 715-345-7728

Sec. 31