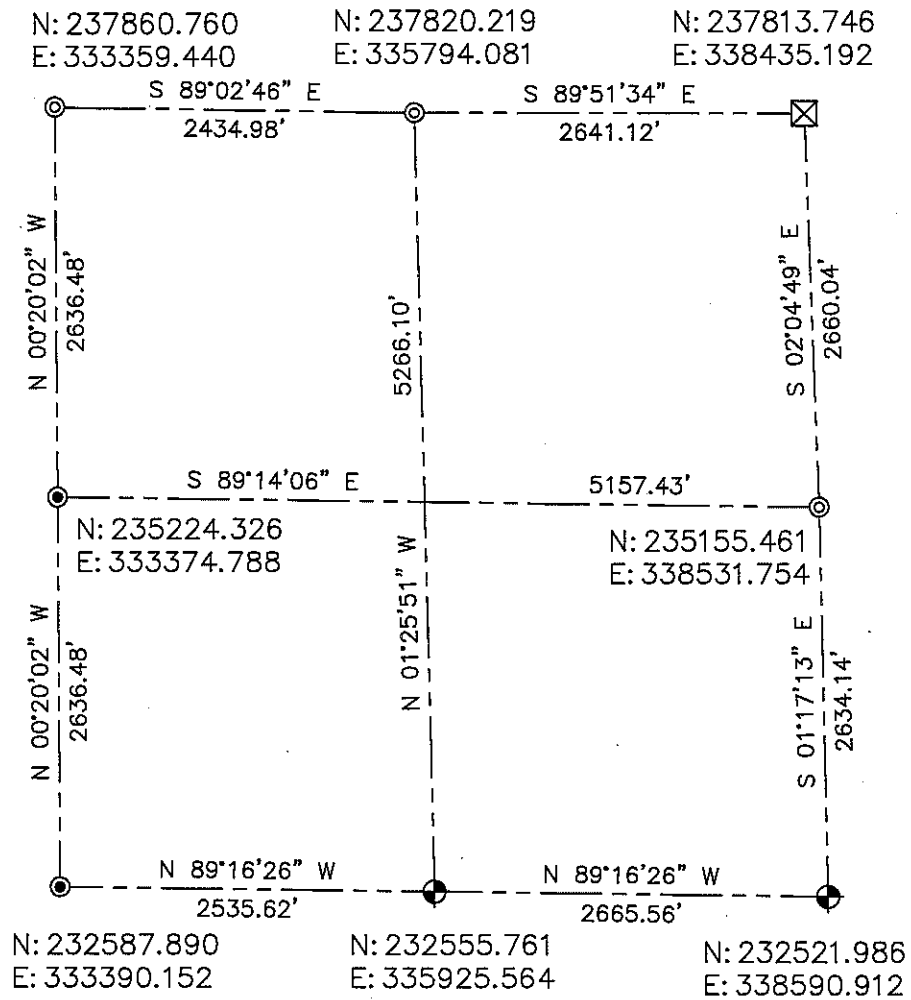
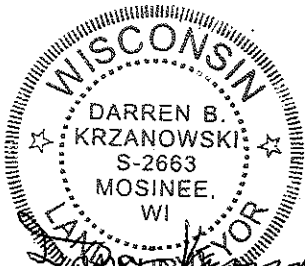


**LINCOLN COUNTY SECTION SUMMARY
SECTION 30
TOWNSHIP 35 NORTH RANGE 5 EAST
TOWN OF WILSON**



BEARINGS AND COORDINATES ARE BASED ON THE LINCOLN COUNTY COORDINATE SYSTEM

CERTIFIED CORRECT:



DARREN B. KRZANOWSKI RLS 2663
REGISTERED LAND SURVEYOR
DATED THIS 10TH DAY OF JANUARY 2013

LEGEND

- ⊕ = LINCOLN COUNTY CAST ALUMINUM MONUMENT
- ⊙ = LINCOLN COUNTY DRIVE-ABLE ALUMINUM MONUMENT
- ⊠ = 6in. X 6in. STONE
- ⊙ = COORDINATES BY OTHERS

RECEIVED BY LINCOLN COUNTY SURVEYOR THIS 10TH DAY OF January 20, 13
Tommy Dalko
COUNTY SURVEYOR

CENTRAL STAKING INC
2523 POST ROAD
STEVENS POINT, WI 54481
OFFICE 715-345-6904 FAX 715-345-7728