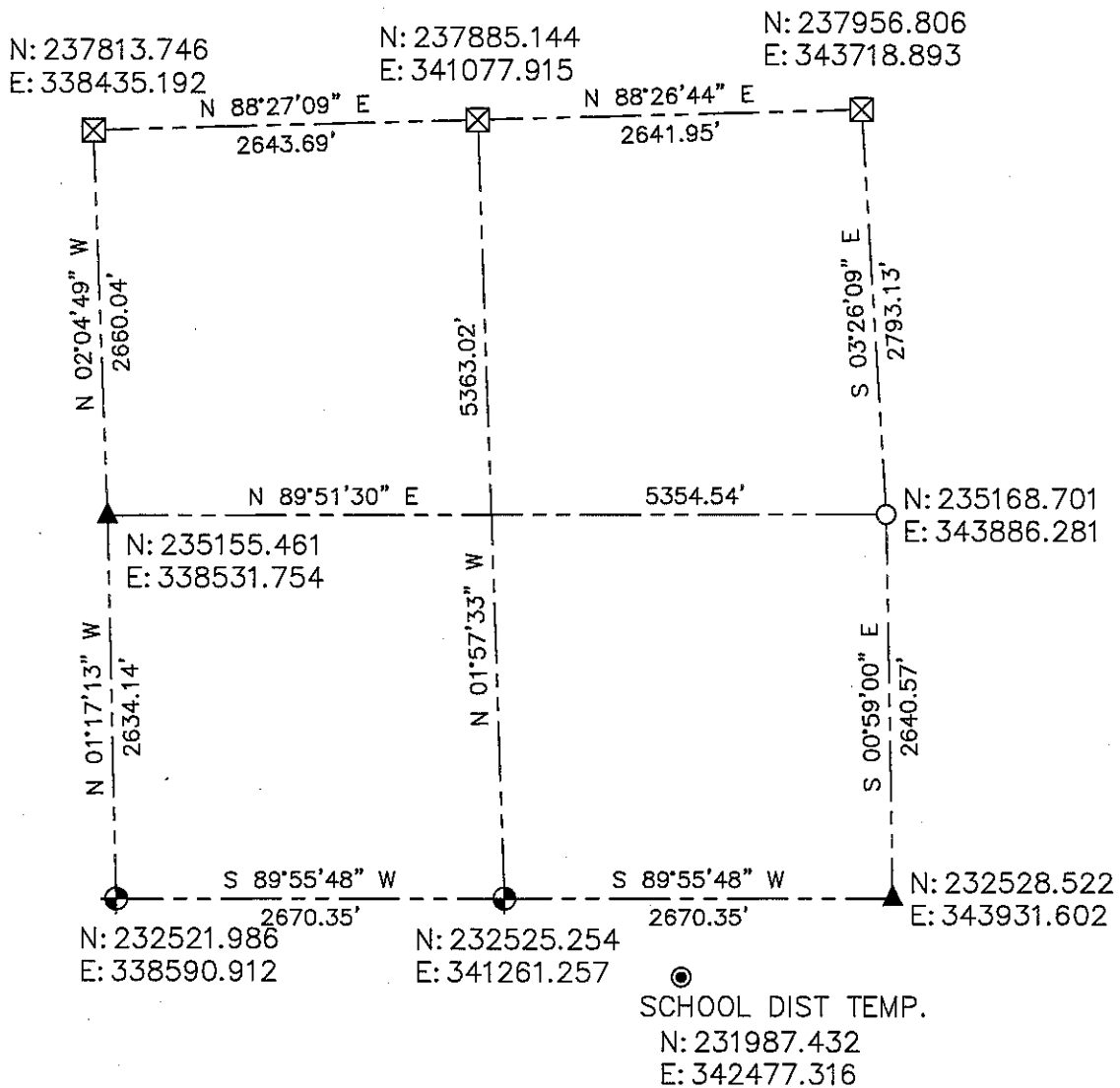


**LINCOLN COUNTY SECTION SUMMARY
SECTION 29
TOWNSHIP 35 NORTH RANGE 5 EAST
TOWN OF WILSON**



BEARINGS AND COORDINATES ARE BASED ON THE LINCOLN COUNTY COORDINATE SYSTEM

CERTIFIED CORRECT:



DARREN B. KRZANOWSKI RLS 2663
 REGISTERED LAND SURVEYOR
 DATED THIS 10TH DAY OF JANUARY, 2013

LEGEND

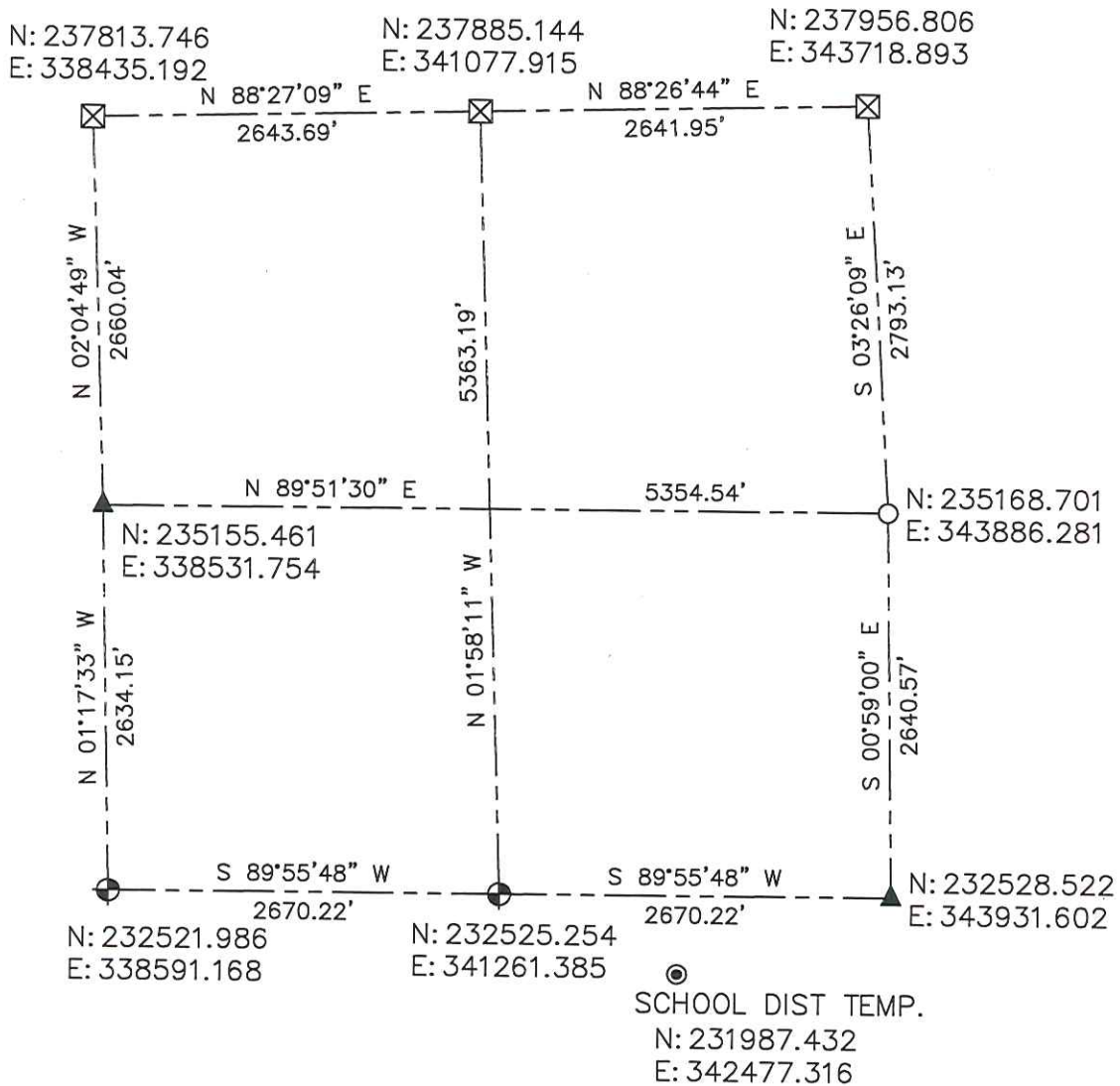
- ⊕ = LINCOLN CO. ALUMINUM CAST MONUMENT
- ⊗ = 6in. X 6in, GRANITE STONE
- = 1 1/4in. OD IRON PIPE
- ▲ = LOCATION PER LINCOLN CO. SURVEY RECORDS
- = 1in. REBAR WITH ALUMINUM CAP

RECEIVED BY LINCOLN COUNTY
 SURVEYOR THIS 10TH DAY
 OF January 2013
Tony Dahl
 COUNTY SURVEYOR

CENTRAL STAKING INC
 2523 POST ROAD
 STEVENS POINT, WI 54481
 OFFICE 715-345-6904 FAX 715-345-7728

Sec. 29

**LINCOLN COUNTY SECTION SUMMARY
SECTION 29
TOWNSHIP 35 NORTH RANGE 5 EAST
TOWN OF WILSON**



BEARINGS AND COORDINATES ARE BASED ON THE LINCOLN COUNTY COORDINATE SYSTEM

CERTIFIED CORRECT:



DARREN B. KRZANOWSKI RLS 2663
 REGISTERED LAND SURVEYOR
 DATED THIS 20TH DAY OF FEBRUARY, 2012

CENTRAL STAKING INC
 2523 POST ROAD
 STEVENS POINT, WI 54481
 OFFICE 715-345-6904 FAX 715-345-7728

LEGEND

- ⊕ = LINCOLN CO. ALUMINUM CAST MONUMENT
- ⊠ = 6in. X 6in, GRANITE STONE
- = 1 1/4in. OD IRON PIPE
- ▲ = LOCATION PER LINCOLN CO. SURVEY RECORDS
- ⦿ = 1in. REBAR WITH ALUMINUM CAP

RECEIVED BY LINCOLN COUNTY
 SURVEYOR THIS 22ND DAY
 OF February 20 12
Tommy Dalk
 COUNTY SURVEYOR

Sec. 29