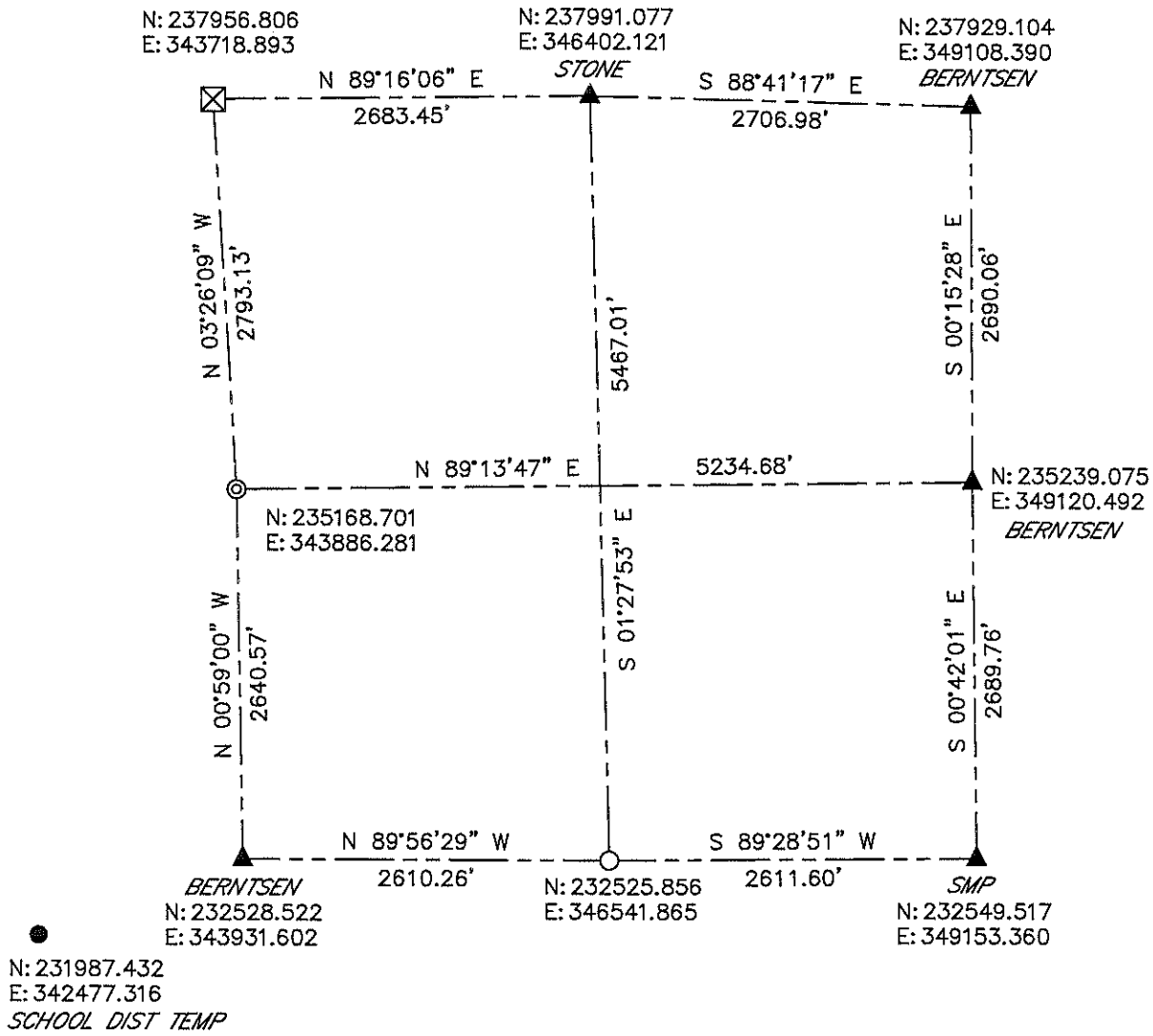


**LINCOLN COUNTY SECTION SUMMARY
SECTION 28
TOWNSHIP 35 NORTH RANGE 5 EAST
TOWN OF WILSON**



BEARINGS AND COORDINATES ARE BASED ON THE LINCOLN COUNTY COORDINATE SYSTEM

LEGEND

- ⊠ = 6in. X 6in. GRANITE STONE
- = 3/4in. REBAR W/ALUMINUM CAP
- = 2in. OD IRON PIPE
- ⊙ = 1 1/4in. OD IRON PIPE
- ▲ = COORDINATES PER COUNTY SURVEY RECORDS

CERTIFIED CORRECT:






DARREN B. KRZANOWSKI RLS 2663
REGISTERED LAND SURVEYOR
DATED THIS 18TH DAY OF JANUARY, 2012

RECEIVED BY LINCOLN COUNTY
SURVEYOR THIS 20TH DAY
OF January 2012
[Signature]
COUNTY SURVEYOR

CENTRAL STAKING INC
2523 POST ROAD
STEVENS POINT, WI 54481
OFFICE 715-345-6904 FAX 715-345-7728

LINCOLN COUNTY SECTION SUMMARY

Legend

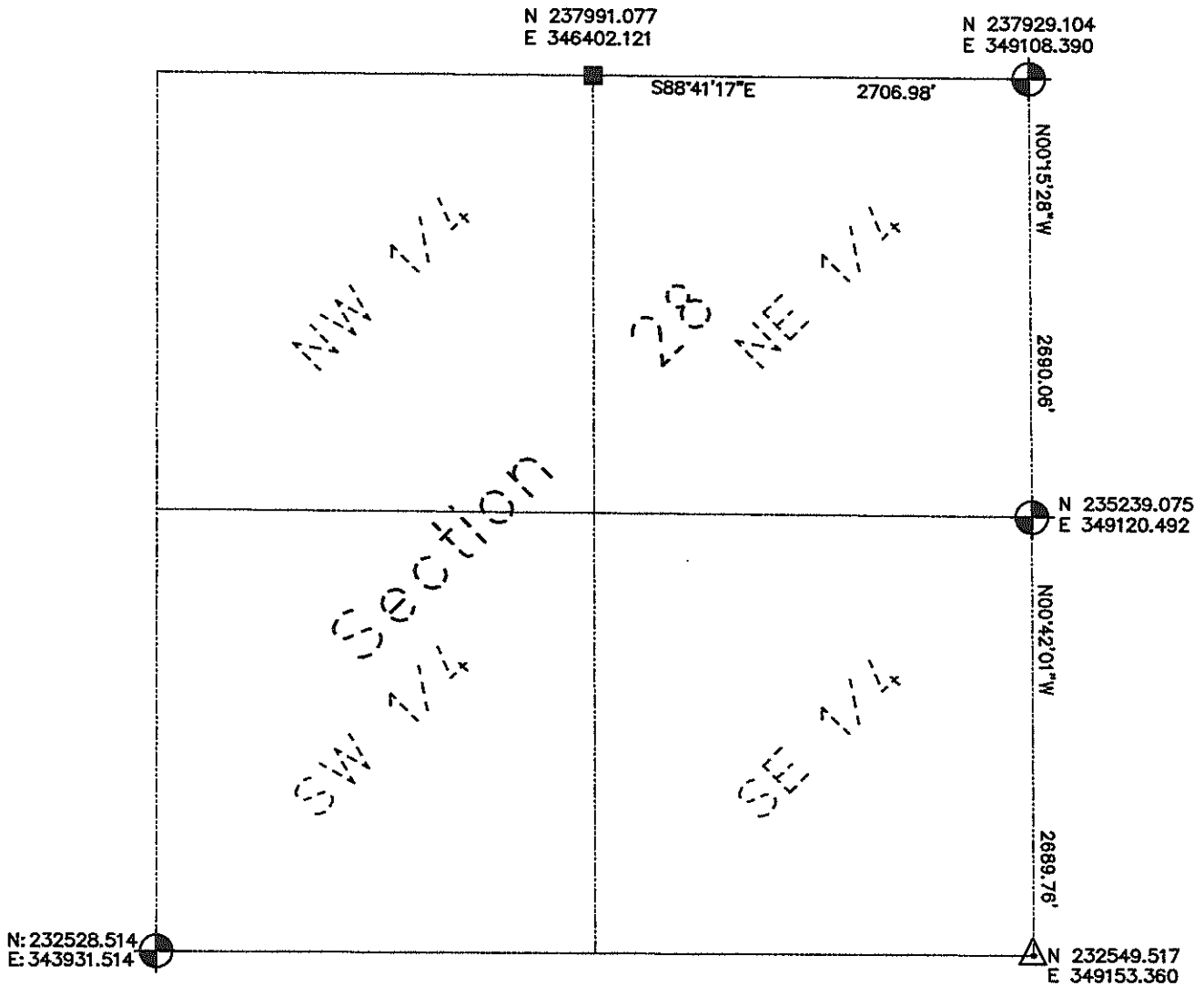
-  Found Lincoln County Berntsen Monument
-  Set Berntsen "SURVEY MARK" Nail
-  Fd. 6" by 6" Granite Monument w/1" Iron Rod over top

28 — **35N** — **5E**
 Section Township Range
Wilson
 Town




Proj. 878

Not to Scale

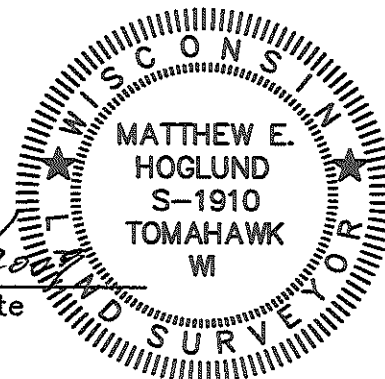


Surveyors Certificate:

Coordinates and bearings are referenced to the Lincoln County Coordinate System as developed by the Wisconsin Department of Transportation and were determined by GPS observations on Control Station "Wilson GPS" as supplied by Lincoln County Land Information Office, to the best of my knowledge and belief.


 Matthew E. Hoglund, S-1910

Date



Sec. 28