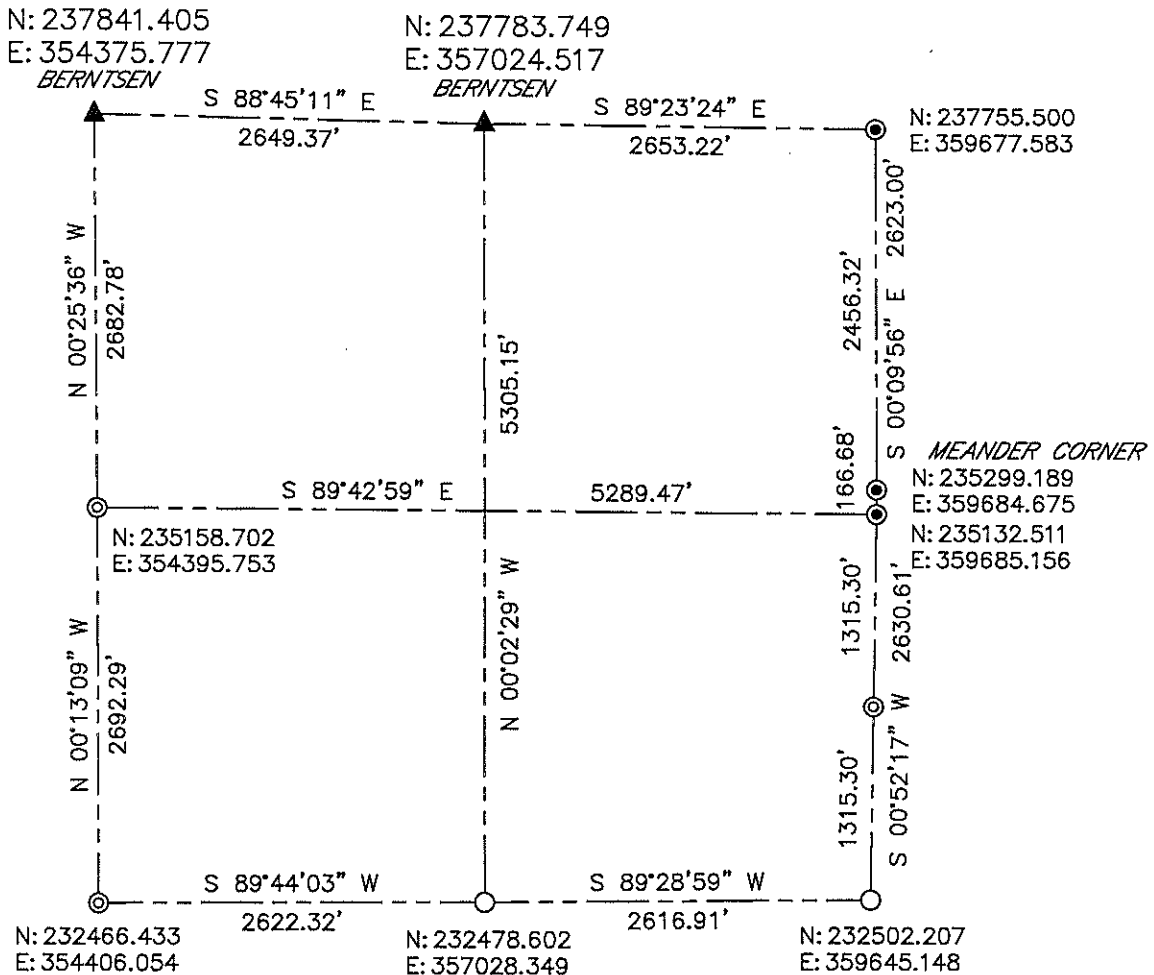


**LINCOLN COUNTY SECTION SUMMARY
SECTION 26
TOWNSHIP 35 NORTH RANGE 5 EAST
TOWN OF WILSON**



BEARINGS AND COORDINATES ARE BASED ON THE LINCOLN COUNTY COORDINATE SYSTEM

LEGEND

- = 2in. OD IRON PIPE
- ⊙ = 1 1/4in. OD IRON PIPE
- = LINCOLN CO. DRIVE-ABLE ALUMINUM MONUMENT
- ▲ = COORDINATES PER COUNTY SURVEY RECORDS

CERTIFIED CORRECT:



DARREN B. KRZANOWSKI RLS 2663
REGISTERED LAND SURVEYOR
DATED THIS 19TH DAY OF JANUARY, 2012

RECEIVED BY LINCOLN COUNTY
SURVEYOR THIS 20TH
OF January 20 12
Zony Ball
COUNTY SURVEYOR

CENTRAL STAKING INC
2523 POST ROAD
STEVENS POINT, WI 54481
OFFICE 715-345-6904 FAX 715-345-7728