

# LINCOLN COUNTY SECTION SUMMARY

## Legend

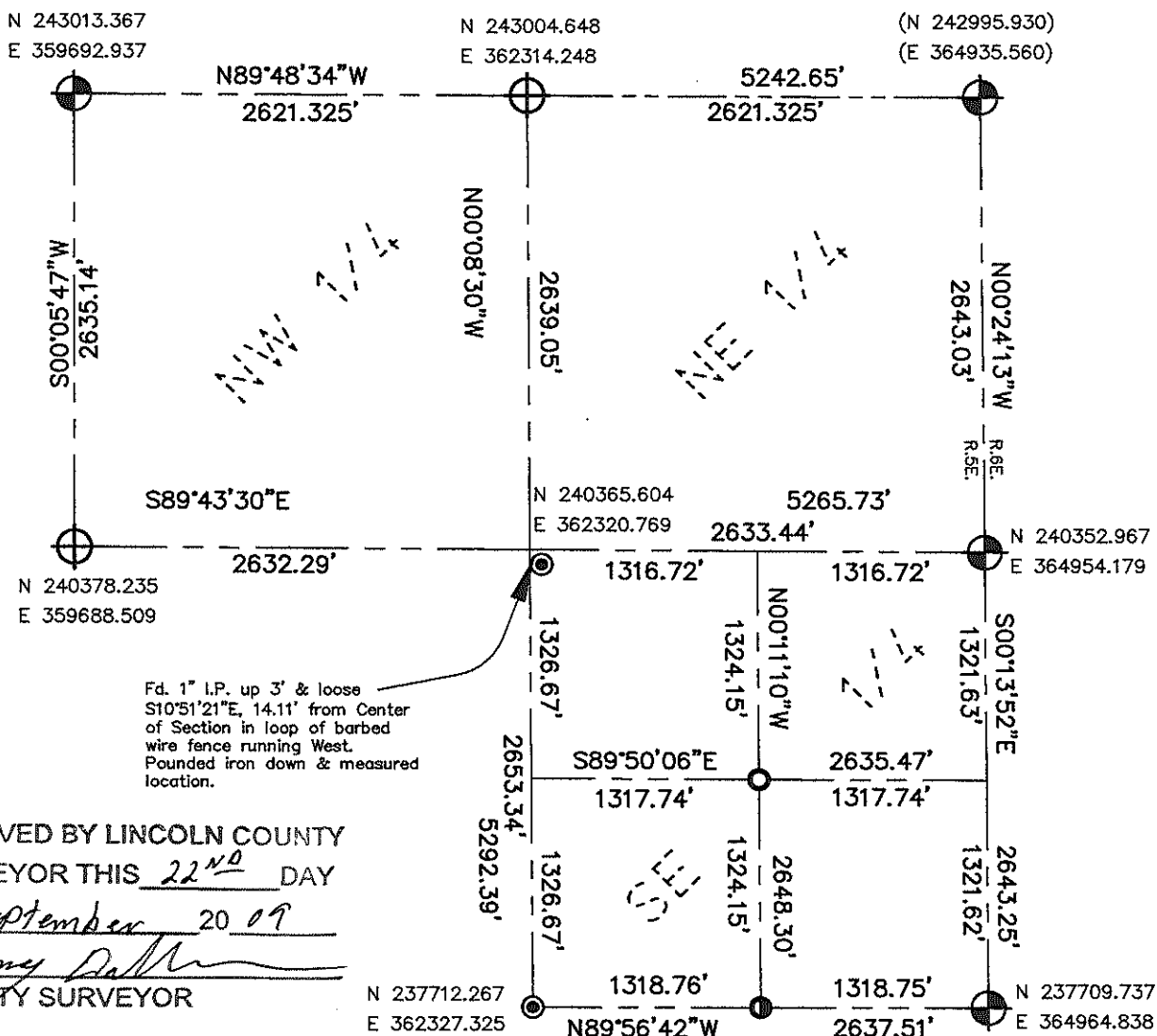
- Set 5' Berntsen Alum. Swamp Monument
- ⊕ Set Lincoln County Berntsen Monument
- ⊙ Found Lincoln County Berntsen Monument
- Set 3/4" by 24" Iron Rebar
- ⊙ Found 1" Iron Pipe

**24** — **35N** — **5E**  
 Section Township Range  
**Wilson**  
 Town



Proj. 877

Not to Scale



RECEIVED BY LINCOLN COUNTY  
 SURVEYOR THIS 22<sup>ND</sup> DAY  
 OF September 20 09  
Tony Dahl  
 COUNTY SURVEYOR

### Surveyors Certificate:

Coordinates and bearings are referenced to the Lincoln County Coordinate System as developed by the Wisconsin Department of Transportation and were determined by GPS observations on Control Station "Wilson GPS" as supplied by Lincoln County Land Information Office or by total station traverse from GPS control pairs, to the best of my knowledge and belief.

Matthew E. Hogleund, S-1910

Date

Sept. 22, 2009

